



COMMONWEALTH AVENUE BRIDGE RENEWAL
PROJECT UPDATE

Our work is on the land of the Ngunnawal People, Ngunnawal Country.

We pay our respects to their Elders – past, present and emerging.



COMMONWEALTH AVENUE BRIDGE RENEWAL PROJECT

The first three bridges lasted an average of five years each. Today's bridge has lasted almost 60.

The Commonwealth Avenue Bridge (the bridge) renewal project is essential to extend the bridge's design life by at least another 50 years. As one of two major crossings over Lake Burley Griffin, it is one of the busiest transport corridors in Canberra.

Maintaining this vital piece of infrastructure is of great importance and a responsibility that the National Capital Authority (NCA) takes very seriously.

The proposed works will strengthen and widen the bridge, to reflect current and future traffic forecast demands, and improve pedestrian and cycleway paths access and safety.

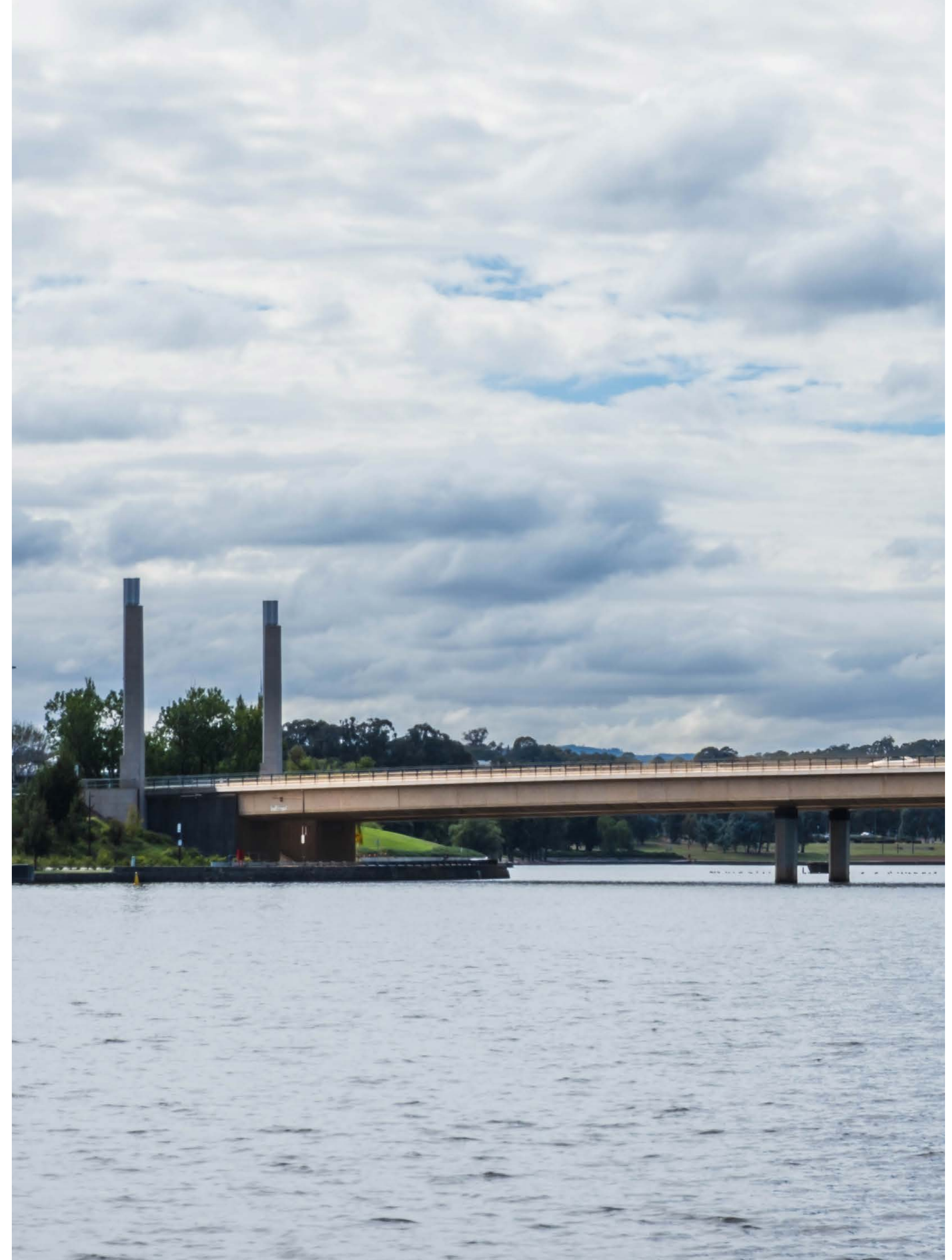
Canberra is growing and our infrastructure needs to keep up.

WHAT

What we are doing.

THE PROJECT INVOLVES:

- Bridge Strengthening: Adequately cater for Canberra's transport needs now and into the future.
- Bridge Widening: Deliver improved access and connectivity for all users travelling on the bridge. Replacement of safety barriers and handrails and installation of new lighting on the bridge.
- Abutments and Approaches: Landscaping works to improve the urban design and provide provisions for better access to and from the bridge and the Lake's foreshore.





WHY

Why do this project.

BRIDGE STRENGTHENING

The bridge does not have capacity for current design vehicle loads. Our most popular cars of today compared to cars on our roads in 1963 are increasingly becoming heavier.

SHARE USER PATH IMPROVEMENT

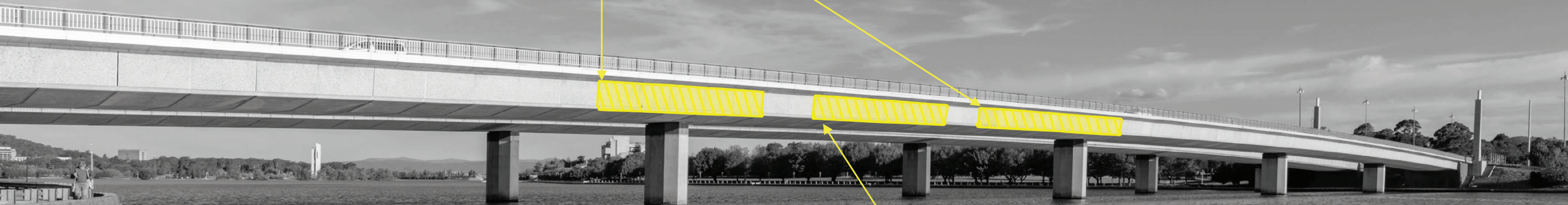
The bridge is one of the busiest active transport links in the City network, supporting almost 1,000 pedestrian and 2,000 cycle trips during morning and evening peak periods. Upgrading and raising all barriers on both bridge spans to comply with code requirements for relevant bridge user groups.

ACCESSIBLE PATH OF TRAVEL.

All four pedestrian approaches from lakeside to the bridge level will be enhanced providing improved amenity and accessible connections along the existing Lake Loop.

Bridge Strengthening

Approximately 54% to meet T44/L44 loading in hog

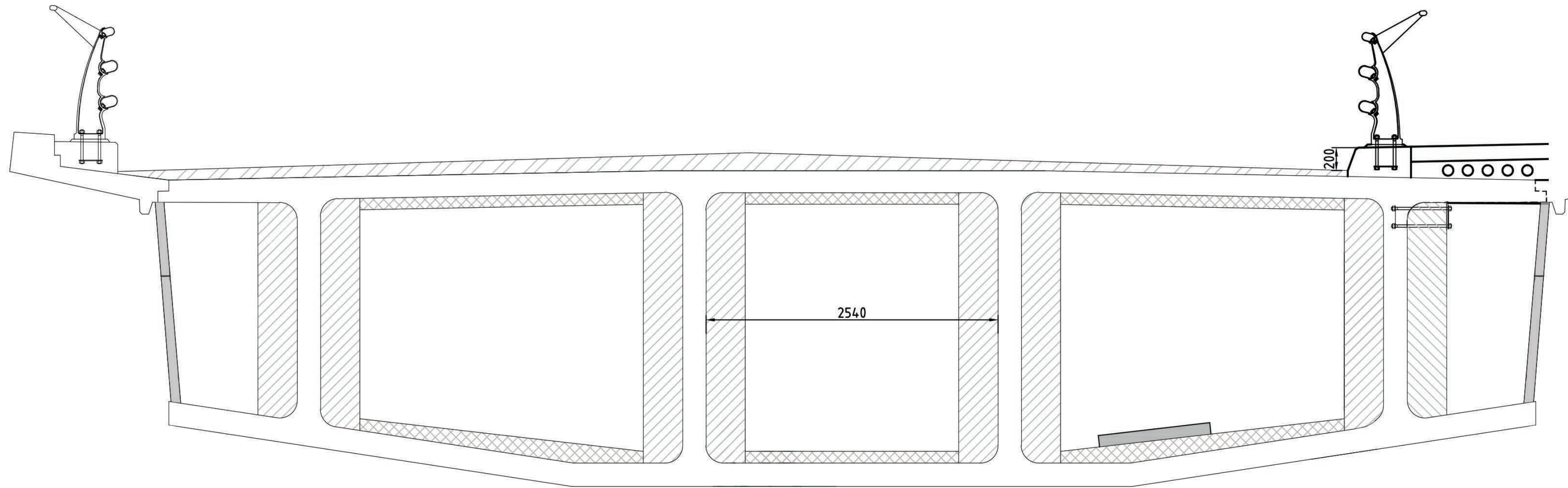


Bridge Strengthening

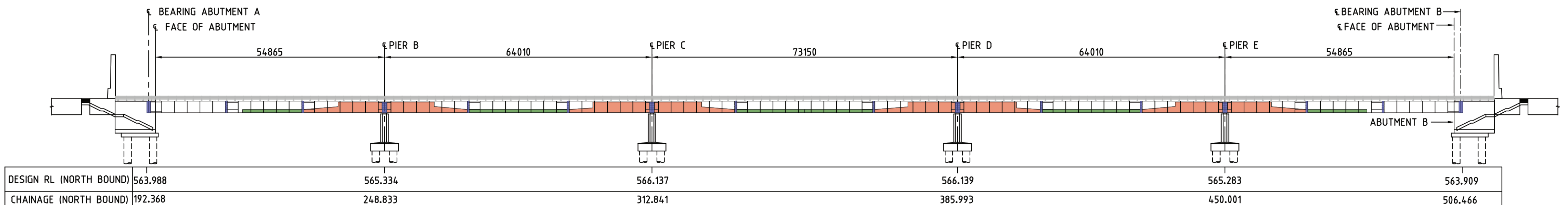
Approximately 12% to meet T44/L44 loading in sag

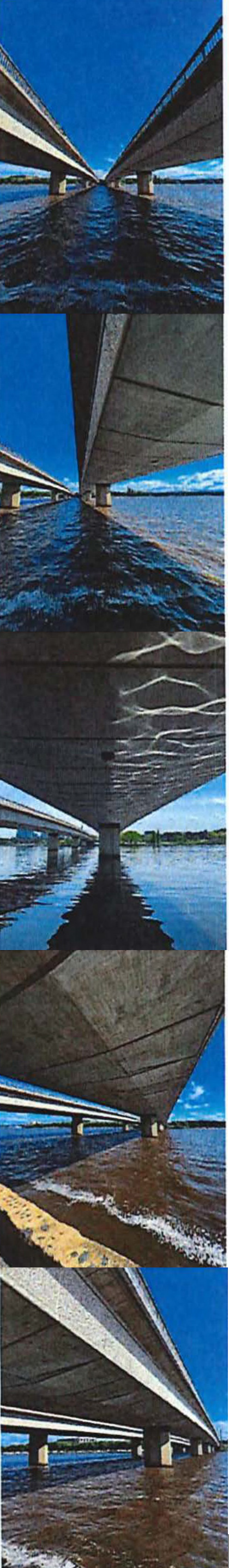
BRIDGE STRENGTHENING

Analysis of the bridge strengthening was conducted to determine the extent of strengthening to meet relevant design standards for the load capacity and match the feeder road network.



PROPOSED STRENGTHENING WORKS CROSS SECTION - SOUTH BOUND





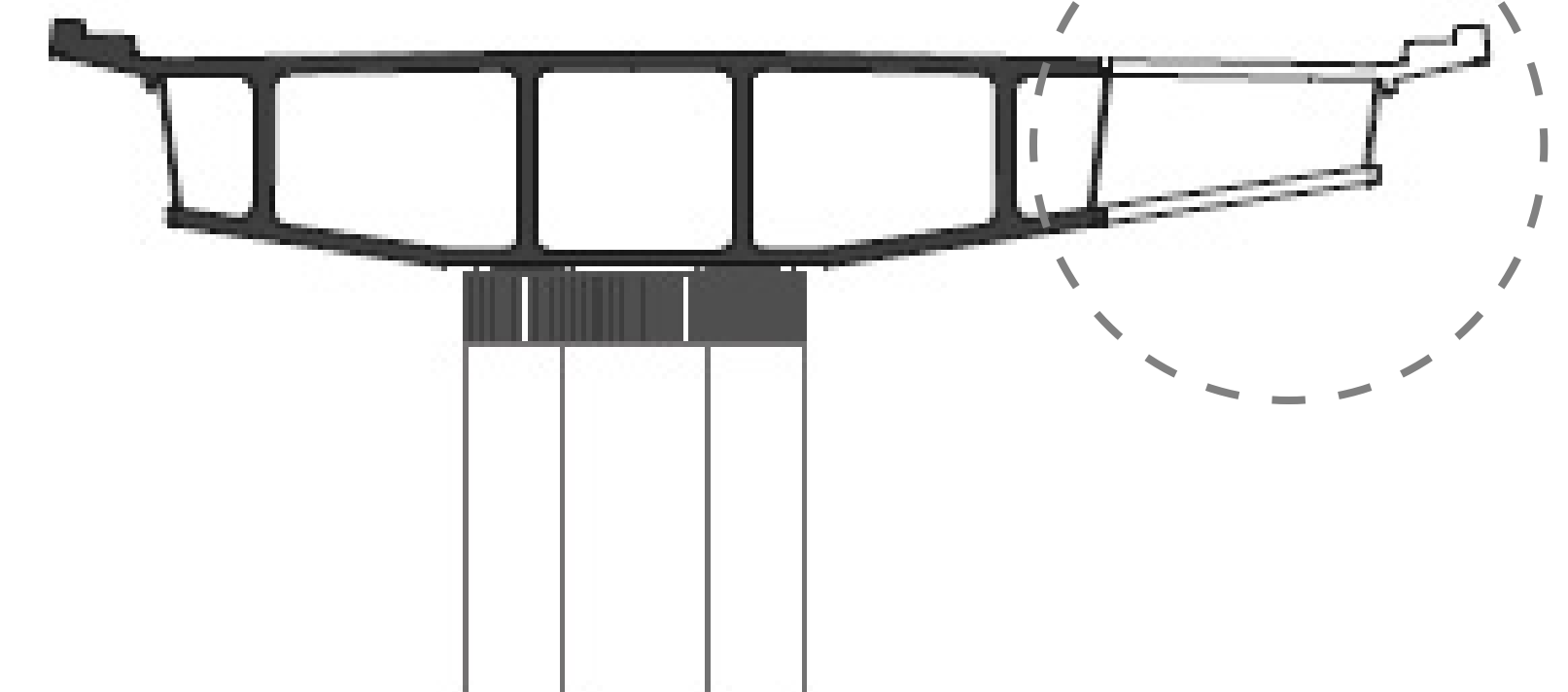
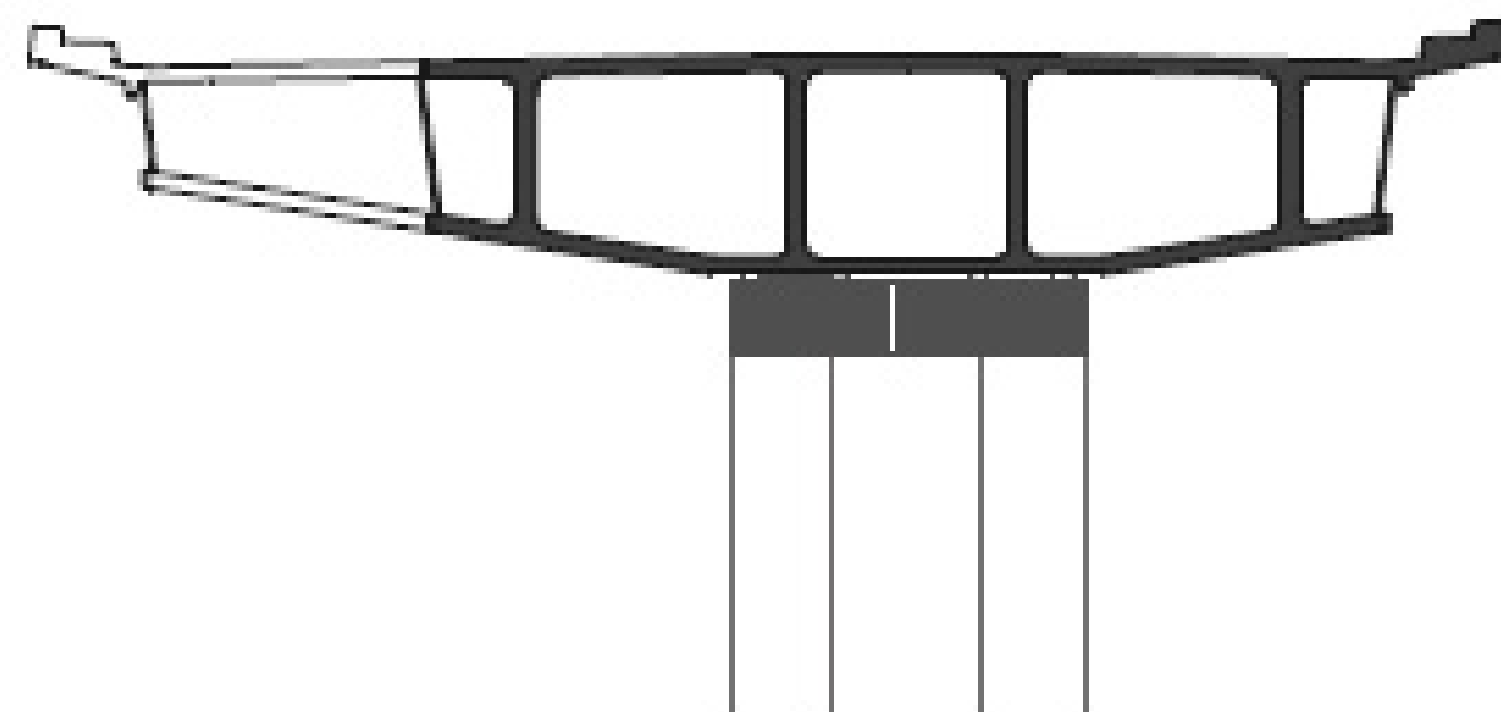
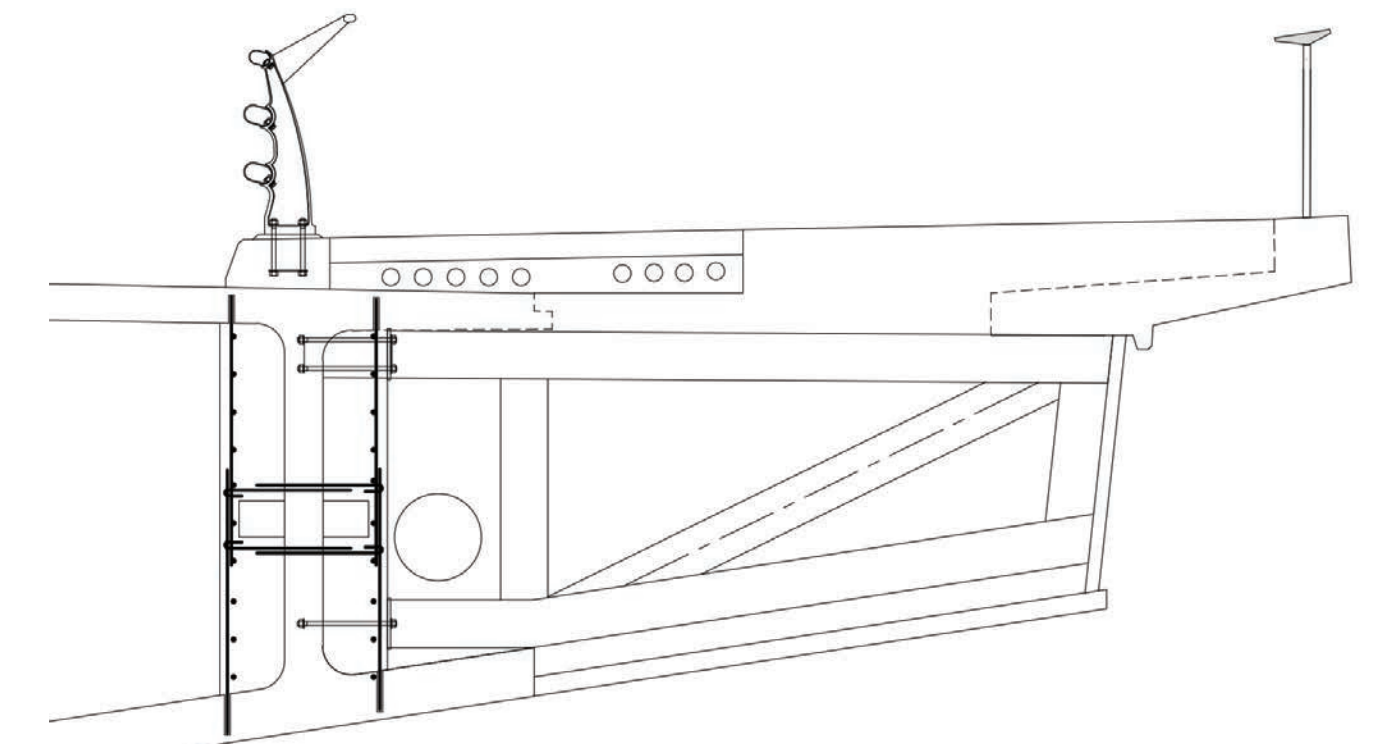
BRIDGE ARCHITECTURE

Commonwealth Avenue Bridge comprises a pair of mirror reversed matching elements which read together as one. The form of the bridge widening is a critical element in the overall concept design as it is required to be lightweight, durable and complementary of the existing bridge structure.

EXISTING BRIDGE ARCHITECTURAL FORM AND VISUAL IMPACT STUDY

The widening to the external side of each bridge structure maintains the overall symmetry. The extrusion of the existing form for the widening minimises the overall impact of the widening on the pair of bridges.

The asymmetrical result is only visible from a directly axial viewpoint under the bridge. The images on the left, show the different viewpoints under the northbound bridge looking south.



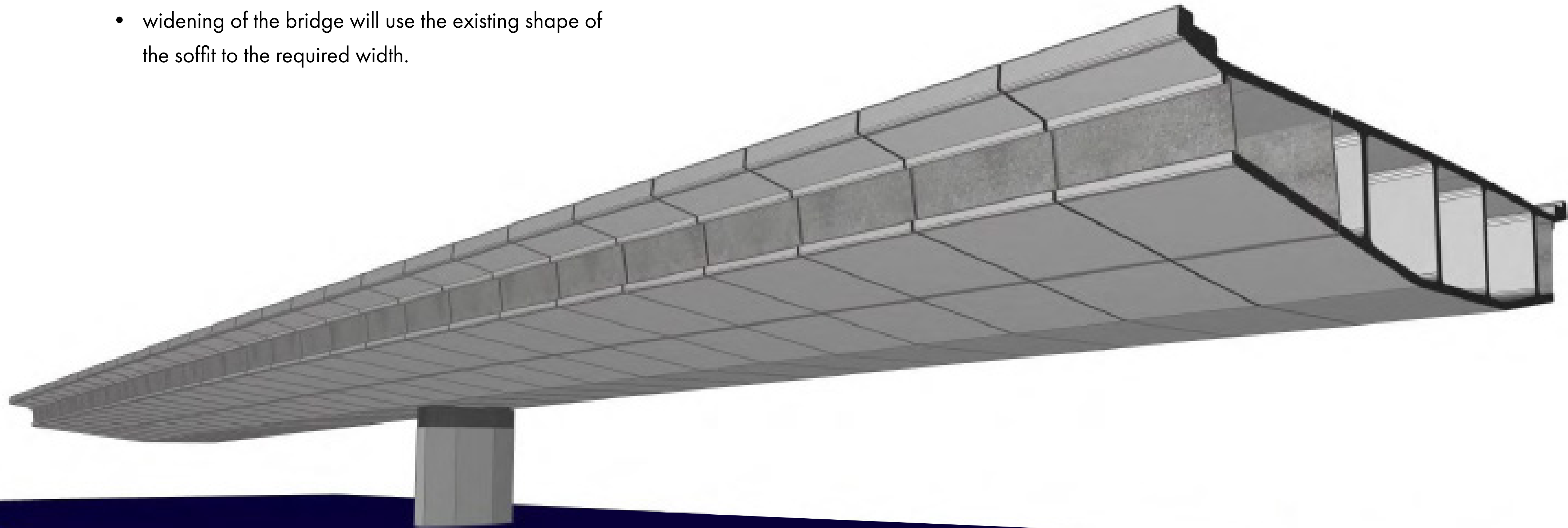
BRIDGE WIDENING

The widening of the bridge will support improved access to pedestrians and other active travel users.

To complement the current bridge soffit profile, the new extensions will reinforce the horizontal emphasis of the bridge and complement the heritage fabric.

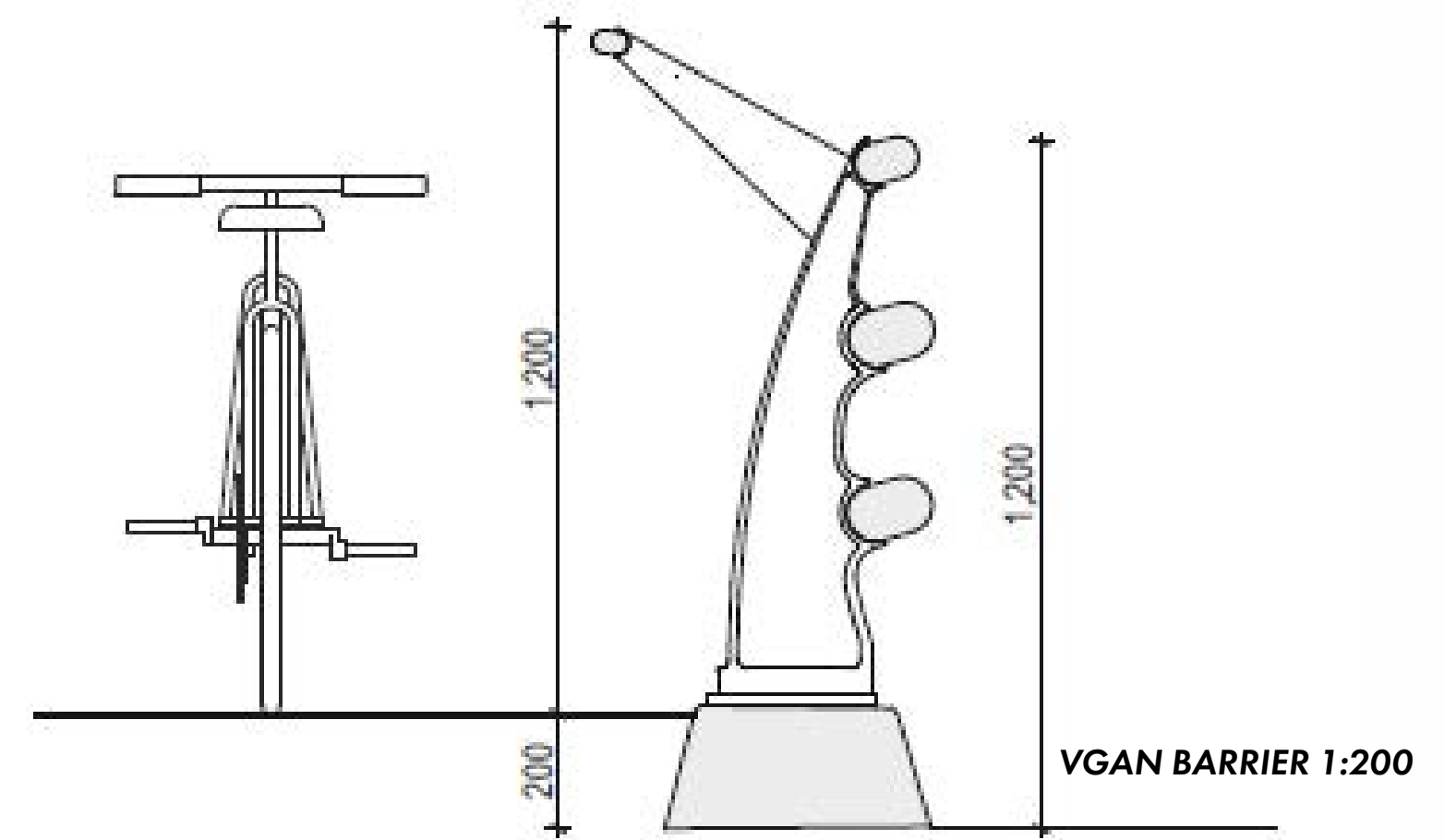
DESIGN ELEMENTS

- widening of the bridge will use the existing shape of the soffit to the required width.



ACTIVE TRAVEL INFRASTRUCTURE

- Dedicated 5m shared cycle and pedestrian pathway.
- New lighting in the balustrade





EXISTING ACTIVE TRANSPORT ROUTE RETAINED

NEW SHARED PATH

EXISTING SECTION OF FOOTPATH UPGRADED

EXISTING CAR PARK REMOVED

NEW ACTIVE TRANSPORT ROUTE PROVIDED

NEW ACCESSIBLE FOOTPATH

NEW BRIDGE APPROACH WORKS

NORTH ABUTMENT

- Improved accessibility and connectivity for all users and pedestrians
- New landscape and public realm works

SOUTH ABUTMENT

- New accessibility, landscape and public realm works



EXISTING STAIRS UNDERNEATH REMOVED

NEW STAIRS ARRANGEMENT

NEW ACCESSIBLE SHARED PATH RAMP

WIDENED PATH TO ALLOW COMMUTER CYCLIST MOVEMENT AWAY FROM FORESHORE PATH

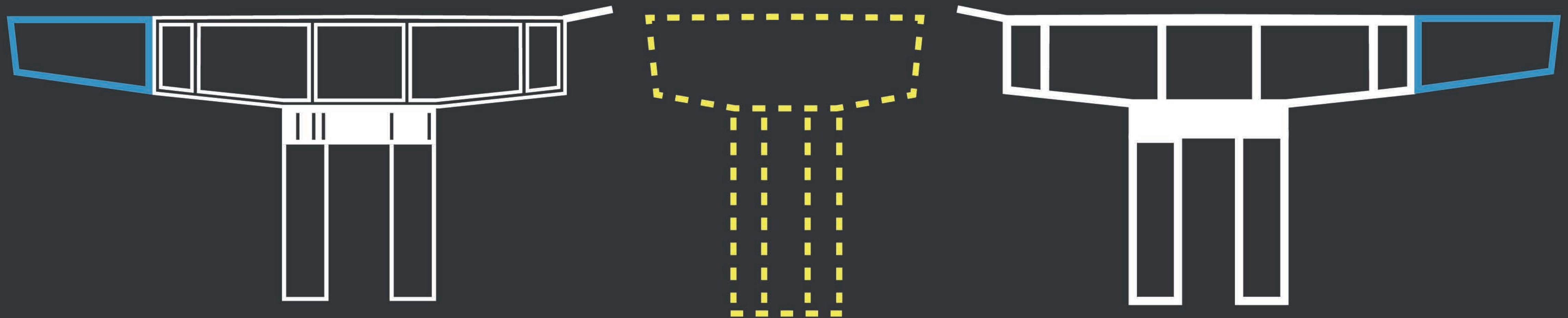
NEW PATHWAY ARRANGEMENT TO ADDRESS CONNECTIVITY AROUND THE BRIDGE

COORDINATION WITH ACT GOVERNMENT

- Regular meetings with Major Projects Canberra to plan the bridge and Light Rail 2A works.
- Member of the ACT Governments Interventions Delivery and Utilities Working Groups.
- Member of the ACT Government multi-agency Disruption Taskforce.
- Regular planning and communication meetings.

PREPARING FOR LIGHT RAIL STAGE 2B

- Any future Light Rail Stage 2B will cross the lake on a separate bridge structure between the spans of Commonwealth Avenue Bridge.
- A future central bridge (shown in yellow) will enhance the new architectural form of the current bridge structures.
- The Commonwealth Avenue Bridge renewal project does not inhibit Light Rail Stage 2A project works.



TIMING WITH ACT GOVERNMENT PROJECTS


- Raising London Circuit - construction currently underway - completion due in 2024.
- Commonwealth Avenue Bridge Renewal project - construction expected to start in 2024 - completion due in 2025.
- Light Rail Stage 2A - Construction is expected to commence in 2024 and complete in 2026, subject to the delivery contractor's methodology.

COMMONWEALTH

The NCA on behalf of the Commonwealth Government is responsible for delivering the Commonwealth Avenue Bridge renewal project.

ACT GOVERNMENT

The ACT Government is responsible for the delivery of the Raising London Circuit project, the Light Rail Stage 2A - City to Commonwealth Park project and future projects connecting light rail to Woden.

 Commonwealth Avenue Bridge Renewal

 Raising London Circuit

 Light Rail Stage 2A



NEXT STEPS

- Finalise construction methodology and traffic management to minimise disruption to users of the bridge.
- Community engagement on proposed bridge architecture, approaches and urban design.

POP-UP INFORMATION SESSIONS

ATTEND ONE OF OUR POP-UP INFORMATION SESSIONS...

The NCA will run four pop-up information sessions throughout April.

- Thursday 13th April | 9am until 11am | Commonwealth Place.
- Friday 14th April | 9am until 11am | Barrine Drive
- Saturday 15th April | 9am until 11am | Commonwealth Place
- Sunday 16th April | 9am until 11am | Barrine Drive

FIND OUT MORE BY HEADING TO OUR PROJECT PAGE:

nca.gov.au/commonwealth-avenue-bridge-renewal

OR SIMPLY SCAN OUR QR CODE:

