



NATIONAL CAPITAL AUTHORITY

*Australian Capital Territory  
(Planning and Land Management) Act 1988*

AMENDMENT 29  
(KINGSTON FORESHORE)

APRIL 2000

## AMENDMENT 29 OF THE NATIONAL CAPITAL PLAN

### Amend the National Capital Plan by:

1. WITHDRAWING Figure 1 entitled “General Policy Plan - Metropolitan Canberra” and REPLACING it with the amended Figure 1 at Attachment A.
2. WITHDRAWING “Figure 3 - Designated Areas” and REPLACING it with the amended Figure 3 at Attachment B.
3. WITHDRAWING the second page of “Figure 17 – The Central National Area (Lake Burley Griffin and Foreshores)” and REPLACING it with the amended second page of Figure 17 at Attachment C, and DELETING the words “*Lake maintenance and boat servicing in Kingston Boat Harbour, and*” from Note B which follows and forms part of Figure 17.
4. WITHDRAWING “Figure 18 – Main Avenues and Approach Routes” and REPLACING it with the amended Figure 18 at Attachment D.
5. DELETING “Wentworth Avenue” from the schedule of Main Avenues set out at 2.1 and “Wentworth Avenue, from Hume Circle to Brisbane Avenue” from the schedule of Main Avenues at 2.3.
6. WITHDRAWING “Figure 20 – Special Requirements” and REPLACING it with the amended Figure 20 at Attachment E.
7. WITHDRAWING the second page of “Figure 4 – The Central National Area (Key Map)” and replacing it with the amended second page of Figure 4 at Attachment F.
8. INSERTING the following new Special Requirements under “**4.5 Special Requirements for Urban Areas**”:

#### **4.5.5 Kingston Foreshore**

The Commonwealth’s interest in Kingston Foreshore is to ensure the Lake Burley Griffin Foreshore in East Basin continues to be developed as a major landscape feature helping to unify the National Capital’s central precincts.

The Kingston Foreshore area forms a prominent urban environment when viewed from within and across East Basin, and from key tourist vantage points such as from Mt Ainslie and Mount Pleasant. Ensuring a notable visual quality, as part of the lake foreshores vista, will be important to maintaining the unity of the central precincts of the National Capital.

The Kingston Foreshore area, which is subject to the following Special Requirements, is that land at Kingston bounded by Bowen Park, Wentworth Avenue (and including the Avenue), Cunningham Street, The Causeway through to Jerrabomberra Creek, Jerrabomberra Creek and a line approximately 7 metres behind the wall of Lake Burley Griffin.

## Special Requirements

Development in the Kingston Foreshore area (the “area”) is to retain a working boat harbour and lake maintenance facility and conform to the following Aesthetic Principles.

### (i) **Foreshore Precinct Landscape**

The landscape of the precinct adjacent to the Lake Burley Griffin foreshore Designated Area should be of an open space parkland character consistent with that in Bowen Park. The landscape should permit views into the development through informal tree planting and should include landscape treatment of a high quality allowing for pedestrian and cycleway movement through the area.

The edge of Jerrabomberra Creek should be landscaped as open space allowing for pedestrian movement and have a character not inconsistent with the role of the Creek as the edge to the Jerrabomberra Wetlands.

### (ii) **Built form and materials**

- **Massing of building development addressing the lake edge**

The massing of building development directly addressing the lake edge is to be articulated and modulated to present a varied appearance and avoid an apparent unbroken wall of development when viewed from the lake.

- **Colour**

The colour scheme of development is to be generally light in tone. Some highlighting with darker colours may be acceptable where these do not present the dominant colour scheme when viewed from or across the Lake.

- **Roofs**

A variety of roof forms, materials and colours should be introduced into the area.

- **Building Height**

The overall height of buildings in the area is to be generally consistent with that of the tree canopy of mature trees in the area. This can be achieved through buildings being a maximum of 4 storeys except for some taller buildings or focal elements where these do not significantly impact on the landscape of the area or detract from the massing of the Kingston Powerhouse building.

- **Materials and Finishes**

Materials on buildings and structures near the Lake edge are to be of a durable and low maintenance nature with a high quality in the materials used. Buildings fronting the Lake edge should generally avoid the use of highly reflective materials.

(iii) **Lighting**

Outdoor lighting in the area should generally use full cut-off light fittings and up-lighting of buildings and structures should be carefully designed to keep night time overspill lighting to a minimum.

The overall lighting impact should not compete in prominence with the lighting of the National Triangle. The area should be lit predominantly with high pressure sodium light sources for streets and mercury vapour for pedestrian routes. Lake frontage external lighting should use metal halide sources.

(iv) **Wentworth Avenue**

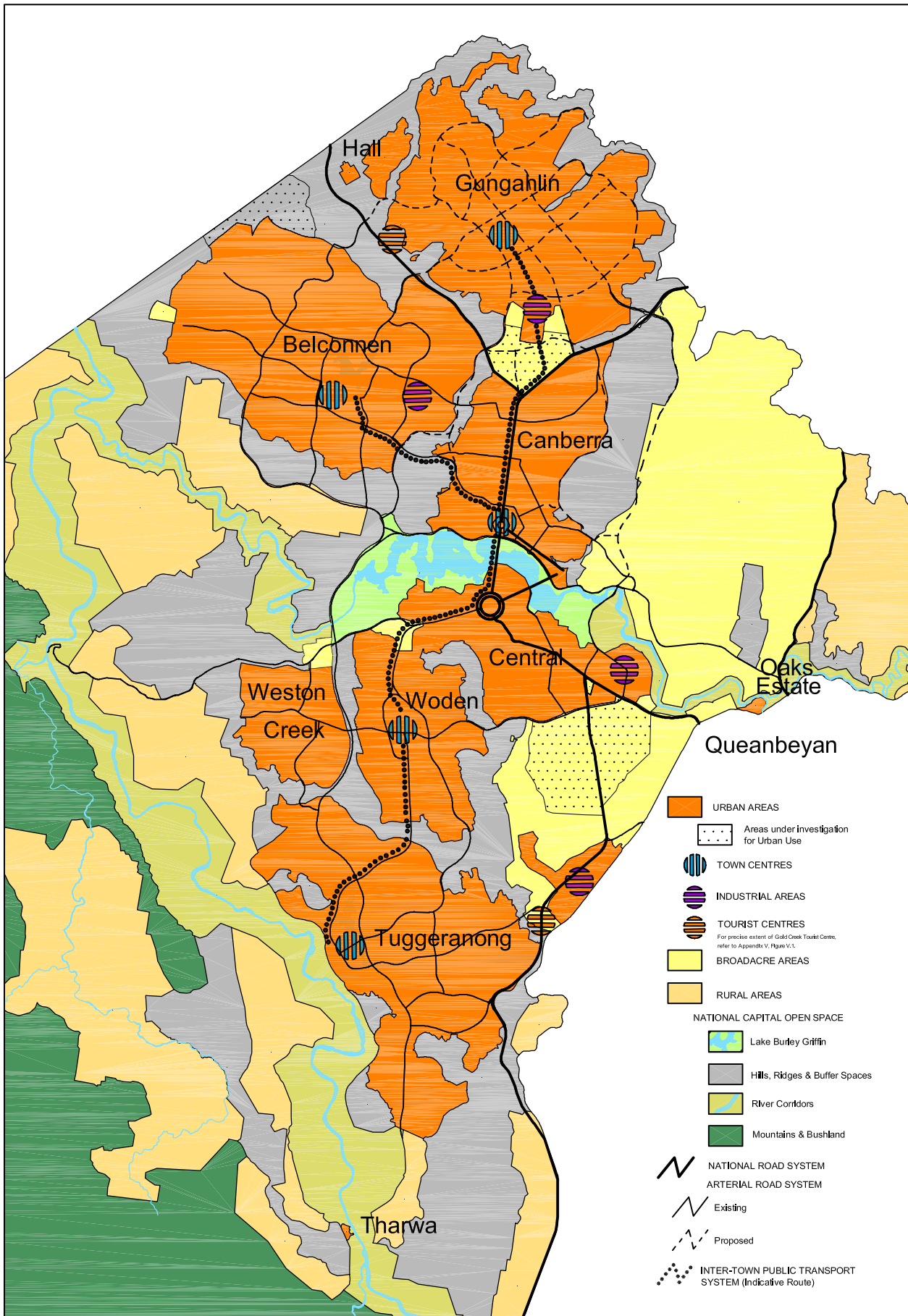
The landscape of Wentworth Avenue is to create a strong balanced planting regime of trees along the Avenue in terms of the species used and spacing. Planting used on both sides should generally be consistent in terms of type and spacing.

The landscape of the median area is to be progressively upgraded to a character consistent with that of Telopea Park being large canopy trees in a grass setting. Car parking in the median may be permitted in the short term pending the phasing out of such parking consistent with the implementation of a parking strategy for the Kingston area which does not involve parking in the median of the Avenue.

The design of street furniture (including lighting) used in the Avenue should generally be consistent with the design of such facilities used on other major Avenues leading to the centre of the national capital. Signage in the Avenue should be limited to traffic control signs and to direct the public to commercial centres in Kingston and the foreshore area.

Developments along the Avenue should address the Avenue but should generally have vehicular access from a road other than directly from the Avenue. Development having direct vehicular access to the Avenue should include a predominantly landscaped frontage treatment exclusive of parking but may include canopies covering set down areas. The landscape of the frontage should respond to the pattern of movement systems created from the Kingston Centre to the foreshore area.

# GENERAL POLICY PLAN - Metropolitan Canberra



# Designated Areas

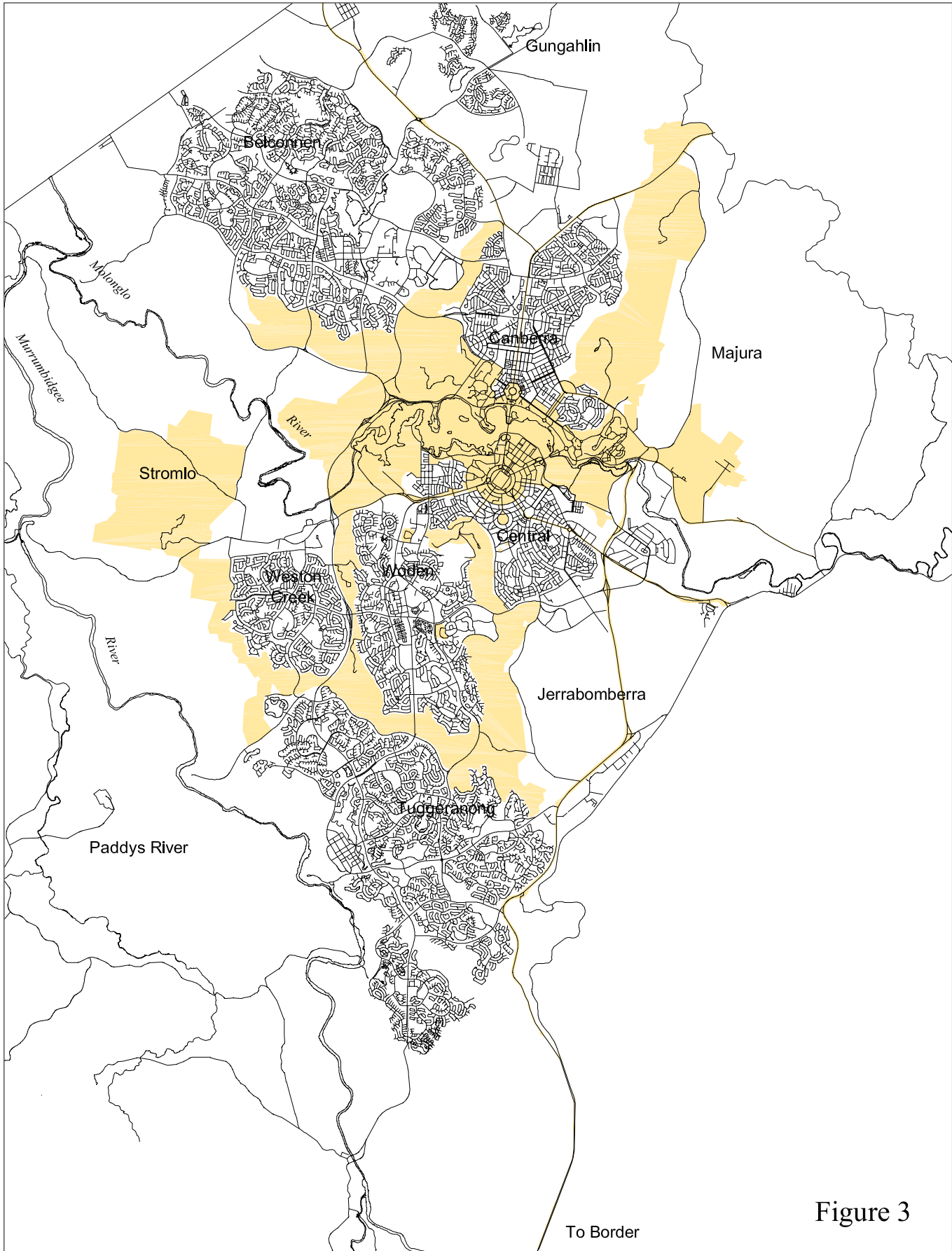
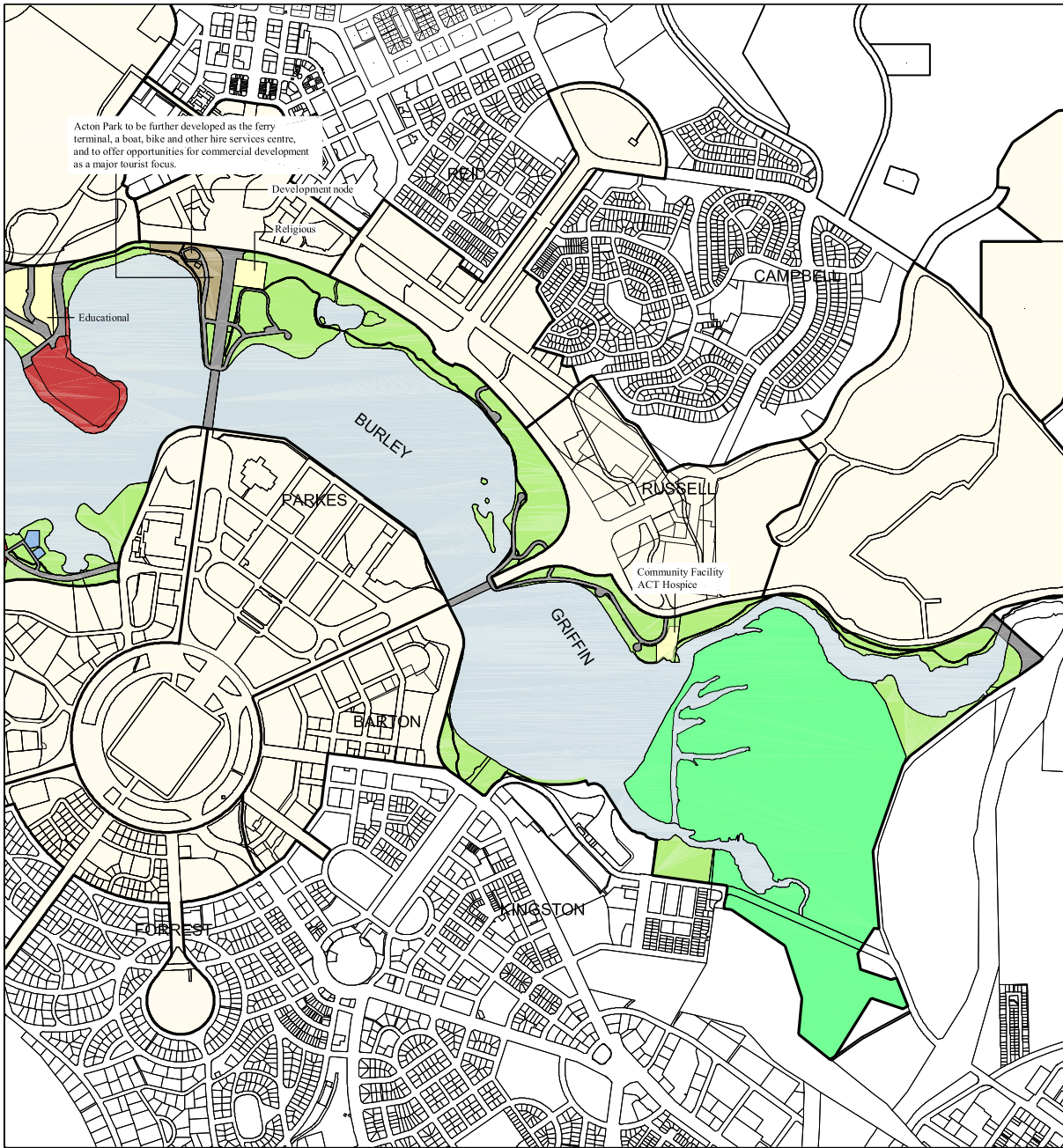


Figure 3





● For details of proposed widening of Morshead Drive refer to Appendix R

- National Capital Use
- Diplomatic Mission
- Clubs
- Water Features (see Note B on following page)
- Road
- Administrative and Utility Service
- Development Nodes (see Note C on following page)
- Community Facility (see Note E on following page)
- Nature Conservation Area (see Note D on following page)
- Restricted Access Open Space
- Open Space (Park) (see Note A on following page)
- Uncommitted Land
- Adjoining Central National Area Maps

Figure 17  
**The Central National Area  
 (Lake Burley Griffin and Foreshores)**

# Main Avenues and Approach Routes

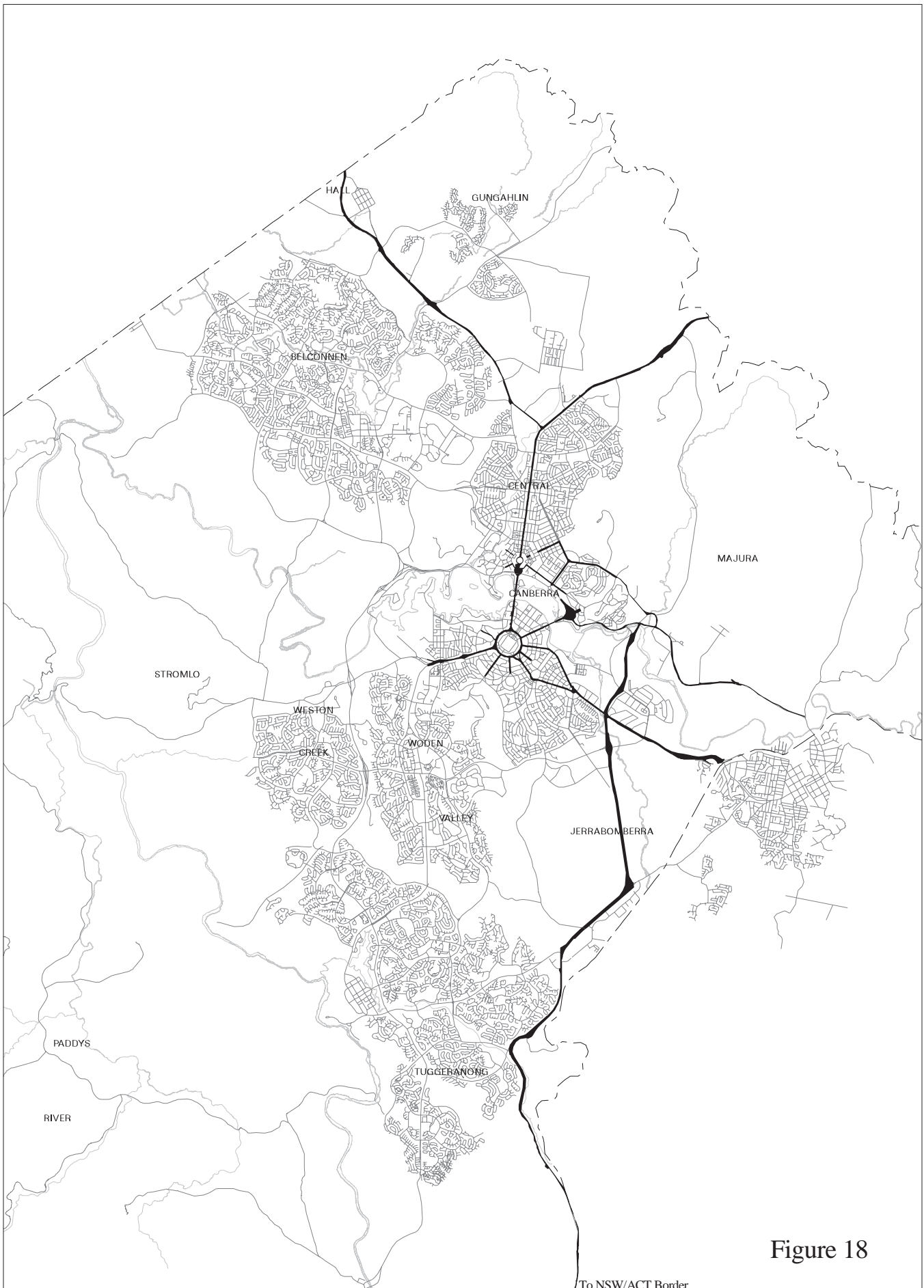


Figure 18

To NSW/ACT Border



# Special Requirements

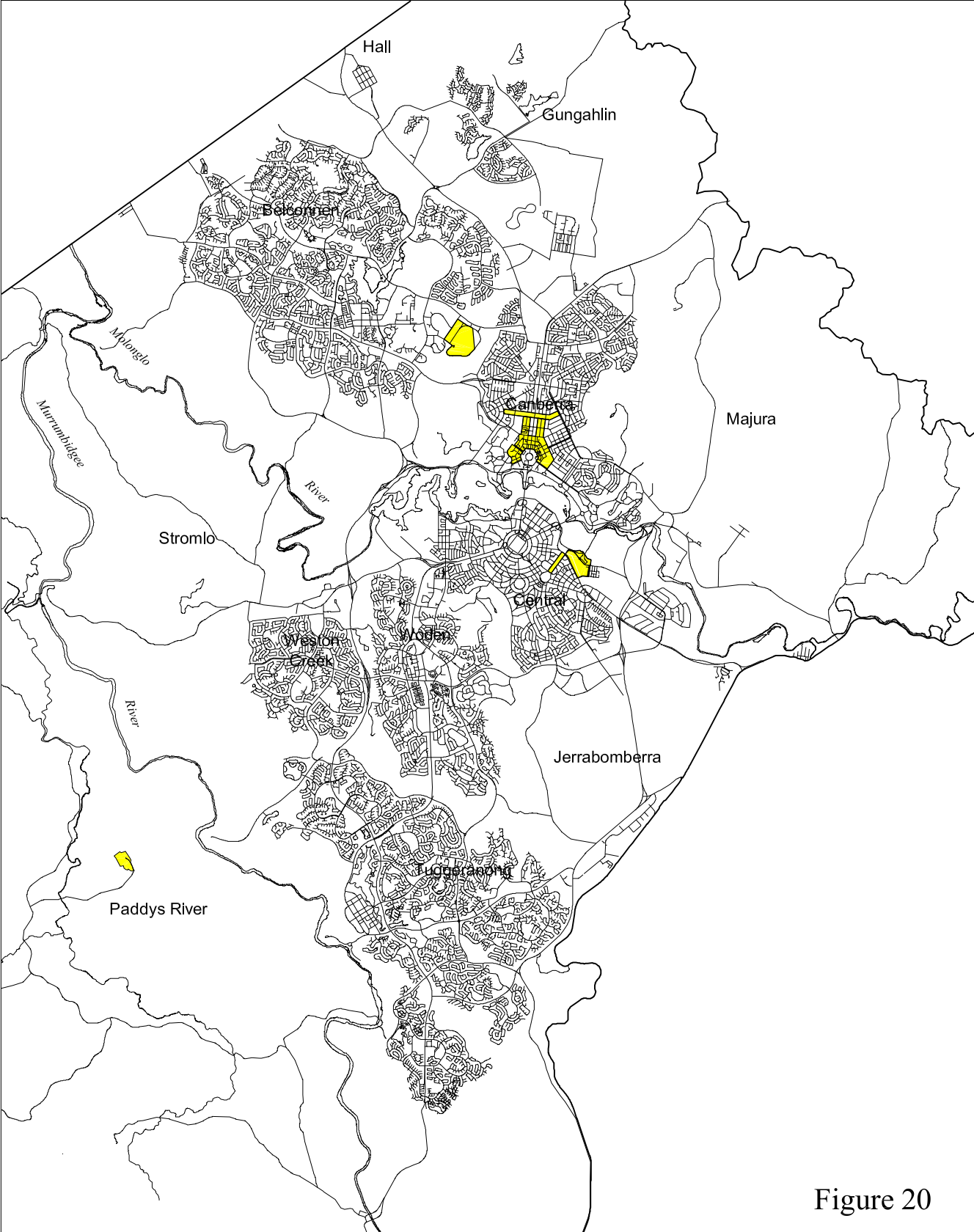


Figure 20





# Key Map

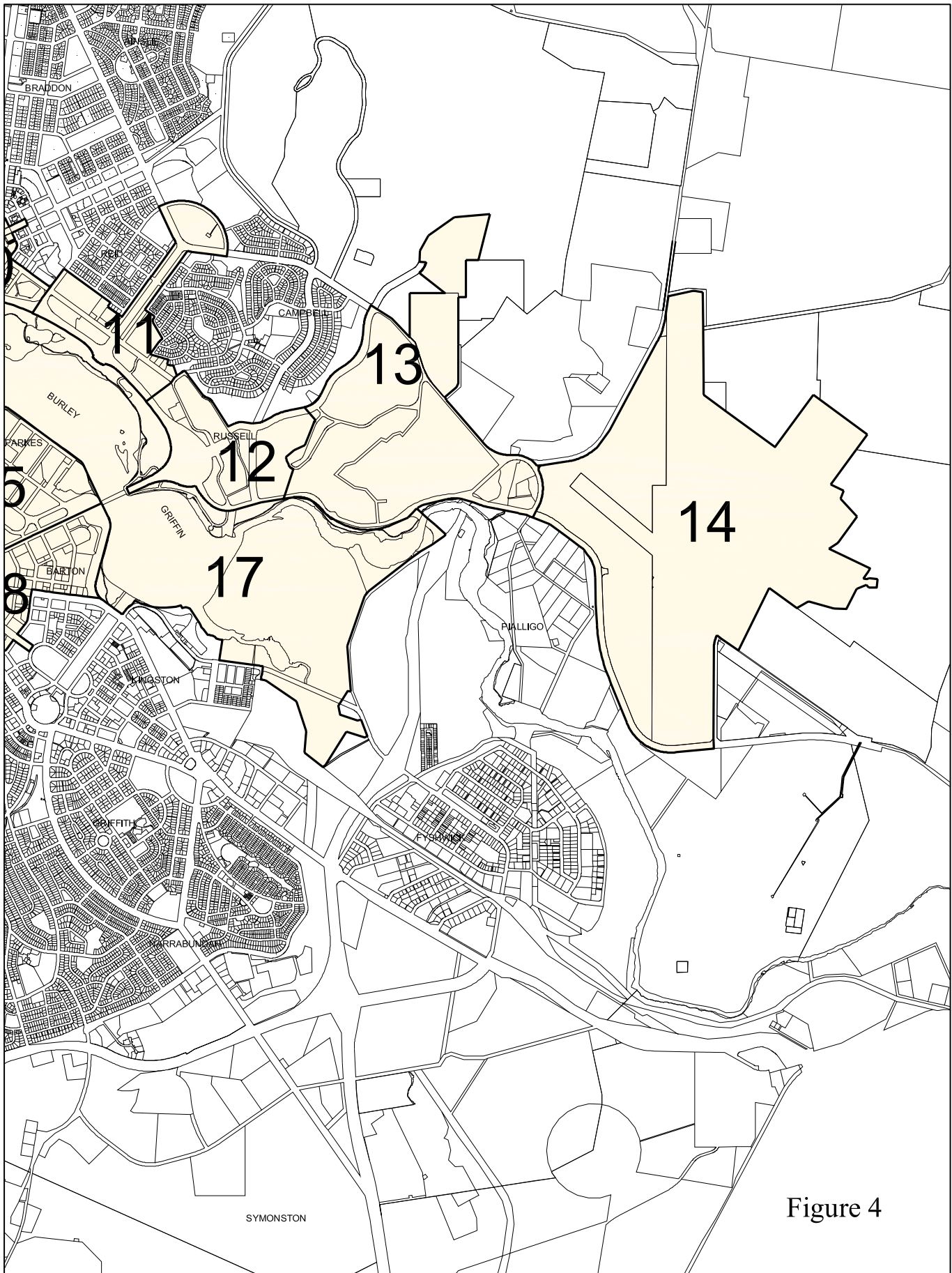


Figure 4