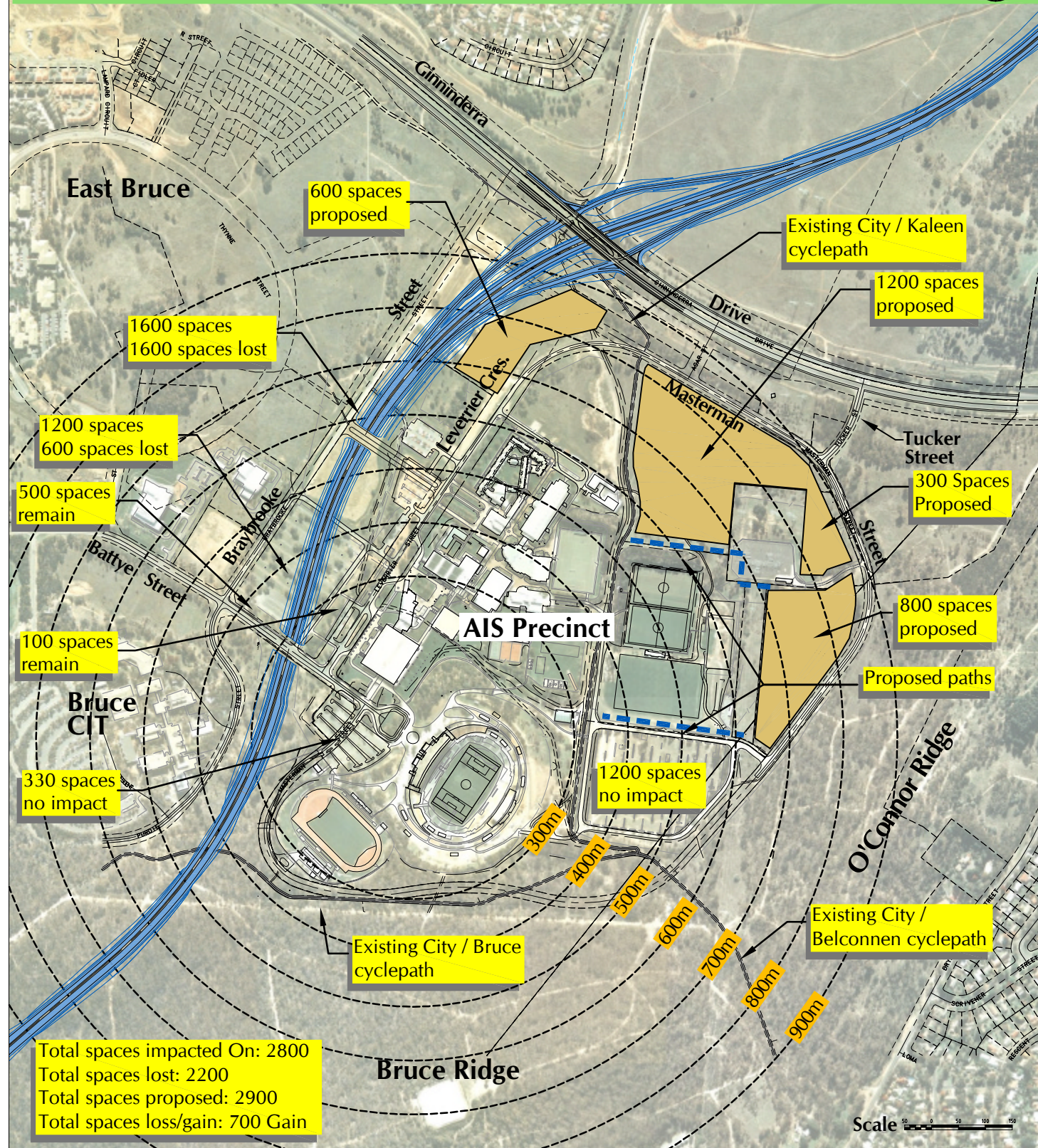
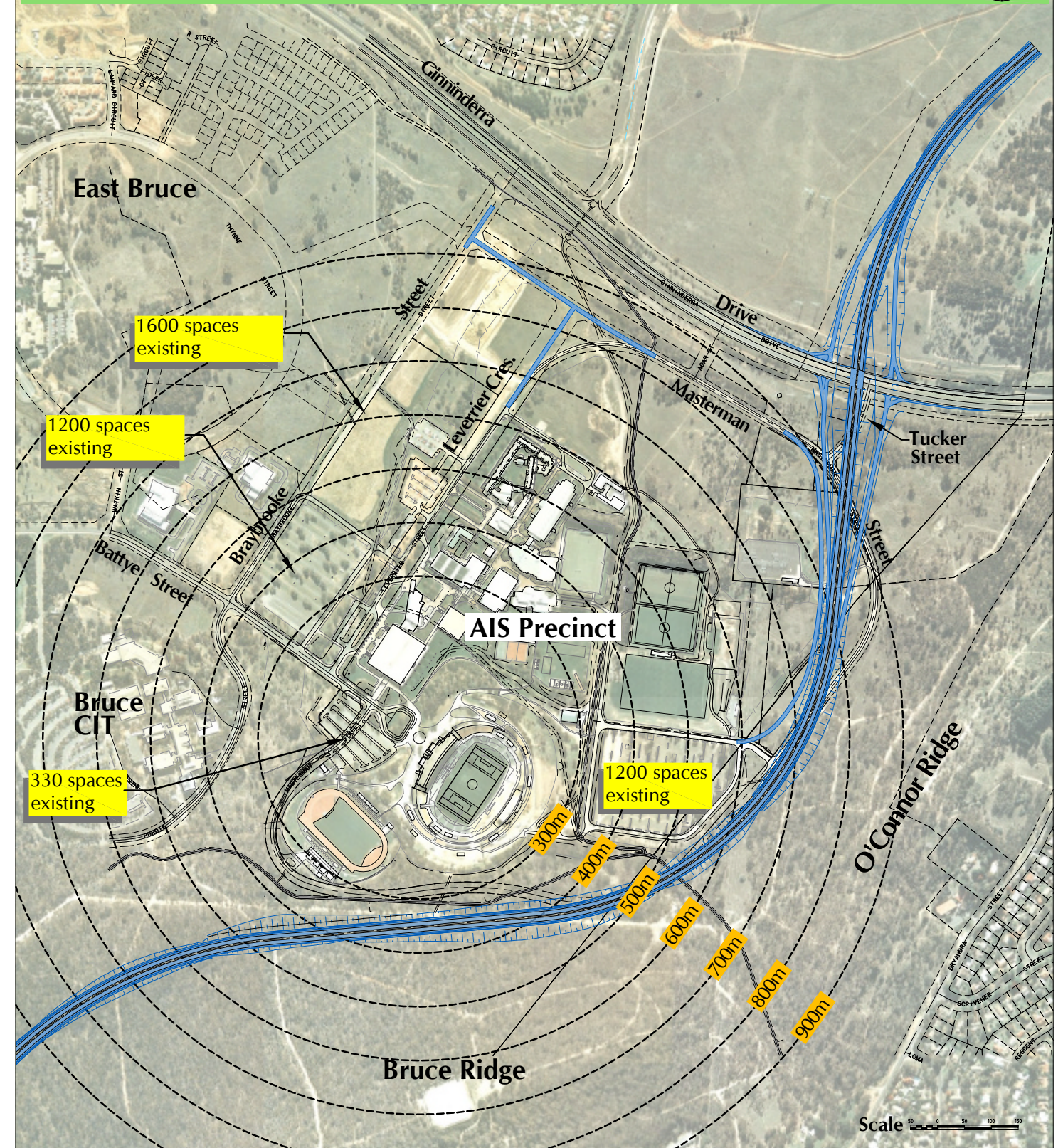


WESTERN ALIGNMENT



EASTERN ALIGNMENT



Comments:

1. Walking distance from Canberra Stadium / AIS Indoor Arena (up to 900 m). Presently all parking is within 600m.
2. Conflict (safety) through the directing of patrons in relocated carparks onto City/Kaleen cyclepath (high speed cyclists) mixing with large volumes of pedestrians.
4. Impacts of proposed parking on AIS Masterplan.
5. General remoteness and safety of patrons.
6. Loss of parking (2200) adjacent to main use areas, ie at front door.

Comments:

None - no impacts, no change

