



Canberra Aqua Park
Work Approval Application
DESCRIPTION OF WORKS

Revision 2.0
August 2020

TABLE OF CONTENTS

Contents

1. Introduction	3
Purpose	3
Background	3
2. Written Description of Work	3
Proposal	3
Proposed Location	4
Detailed Site Plan	5
Timing of Installation	9
Goods Storage during Off-Season.....	10
Reinstatement Method.....	11

1. Introduction

Purpose

The purpose of this report is to provide all the details and supporting documents required for the application of the Work Approval from National Capital Authority (**NCA**) to enable operation of the Canberra Aqua Park (**CAP**) on the Tarcoola Reach swimming are, Black Mountain Peninsula.

Background

Following a successful trial season in the 2019/2020 summer, CAP is planning to remobilise and establish an aqua park on the Tarcoola reach swimming area at the Black Mountain Peninsula, Acton. The 1,400 sqm inflatable aqua park will be a fun attraction that will get people outdoors, improve the enjoyment and utilisation of Lake Burley Griffin and surrounding areas at Black Mountain Peninsula. The project will also help boost the local economy and tourism industry.

2. Written Description of Work

Proposal

The proposal is to establish a new inflatable aqua park on the Lake Burley Griffin.

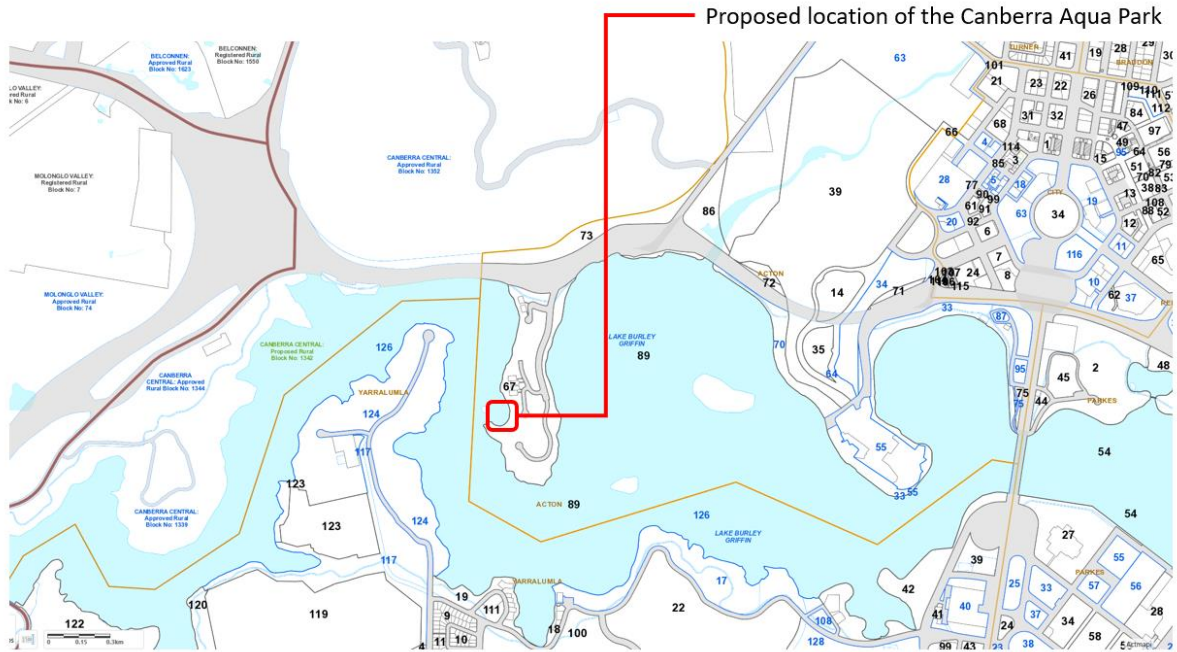
Aquapark is a proven tourist attraction that can assist with bringing visitors to the region. The project will offer a water outdoor attraction at a convenient location in city centre for all families, school excursions and corporate functions. It will promote healthy outdoor living, improve utilisation of a beautiful location on the lake and help boost local tourism and the economy.

CAP is expected to bring in excess of 15,000 visitors to the area in season 2021. Despite limited marketing in our trial period and some extreme weather conditions, CAP attracted a number of groups (both school and corporate) from Interstate and received significant amounts of positive feedback, highlighting the potential of CAP to attract visitors to the region, leading to an increased spend at surrounding local businesses.



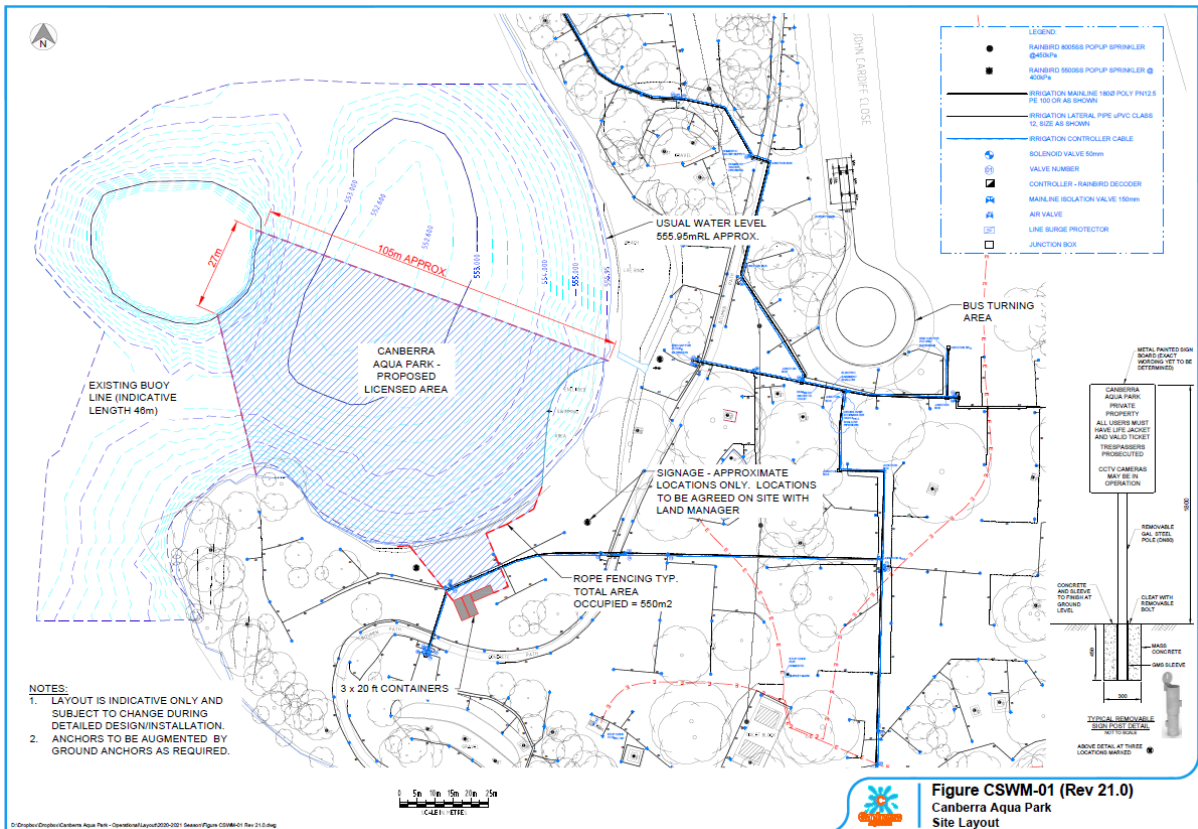
Proposed Location

The proposal is to locate Canberra Aqua Park at the same location as last season within the buoy line erected off Black Mountain Peninsula beach. The area is identified in the map below.



Detailed Site Plan

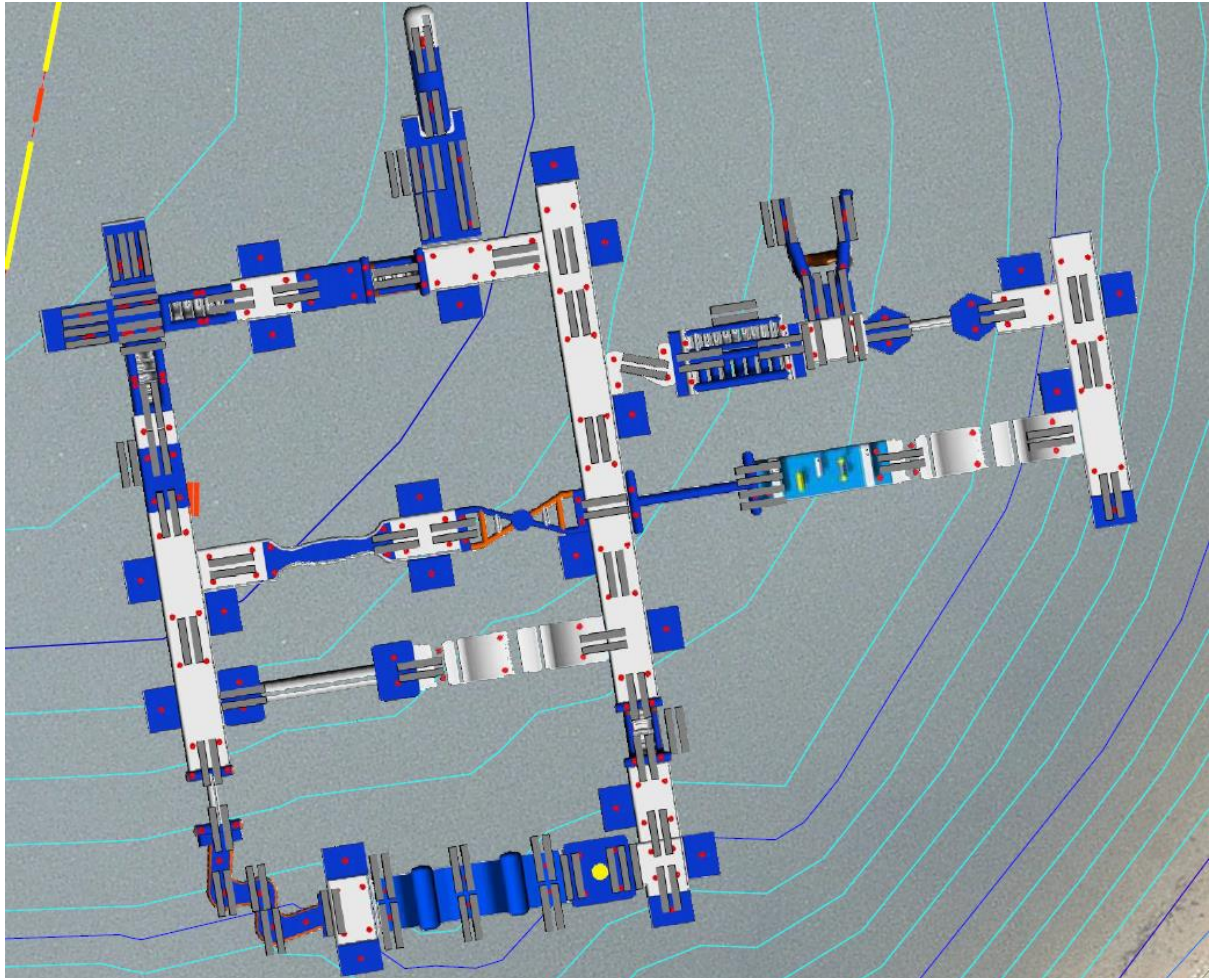
The layout of the proposed CAP site is detailed in the drawing below.



CAP installation will include the following:

- License area – parameter marked in blue in the above layout;

- Inflatables – Approximately 1400 sqm of inflatables on the water, tied together and anchored to the bottom of the lake;
- Anchors – Approximately 160 concrete sleepers, weight approximately 75kg each. Approximate location of the anchors are marked below (location subject to minor adjustment from time to time to accommodate change in lake water level);



- Office Containers – Three freshly painted shipping containers, picture shown below. There is also a provision for another container to serve food and drink, subject to further approval from TCCS. Upon approval of this Work Application, CAP will be looking to modify the office containers for a higher quality presentation in future years;

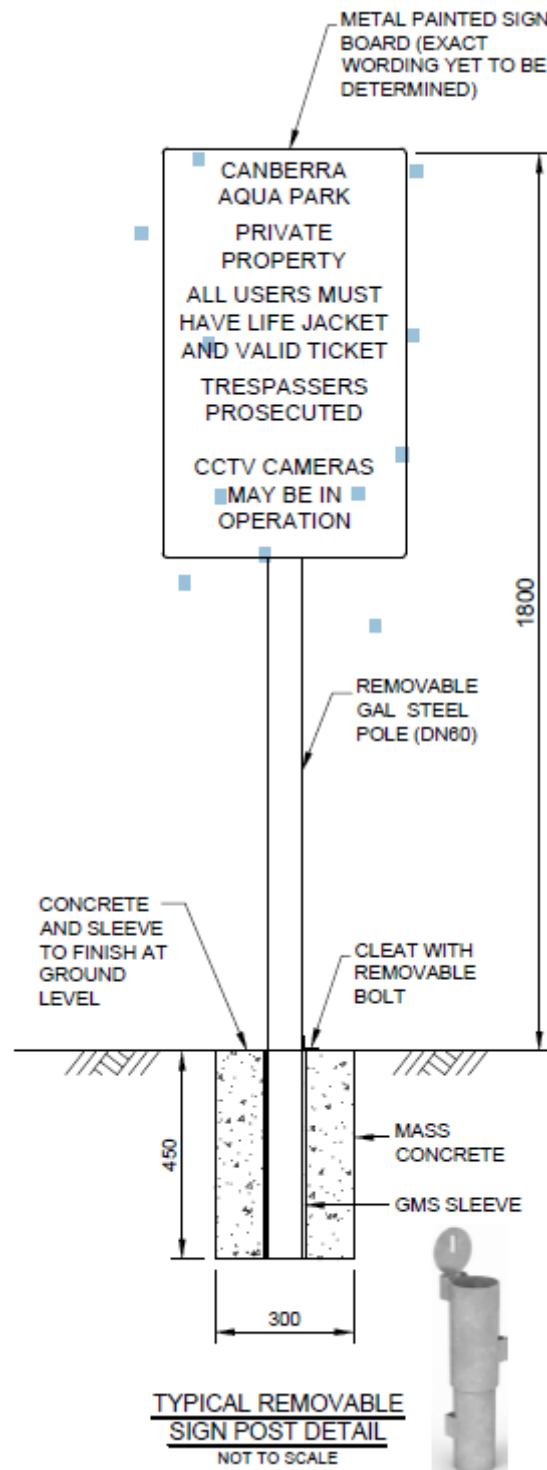


- Power supply – provision for future permanent power supply from the grid;
- Provision for future temporary gazebos or sail clothes, along the shore line to provide additional shelter to all patrons. They will be fixed to new concrete footings to ensure the units do not blow away. These footings will be removed if/when the park is decommissioned;



- Pigtail stake rope fencing, similar to the above, erected along the parameter of the Canberra Aqua Park;

- Consideration for a CCTV – Close Circuit TV to be installed to improve general safety in the area and to deter trespassers and vandalism;
- Three warning signages around the park, as detailed below. The exact locations of these signages are to be agreed with the land manager.



- Two identification signages mounted on the existing road signs on the inbound and outbound along Lady Denman Drive, similar to the pictures below. This will be requested through the Road ACT and other applicable authorities.



Timing of Installation

This application is for a three years period from November 2020 to February 2023.

For season 2021, CAP is planned to be in operation between Saturday 14 Nov 2020 to Sunday 31 January 2021. There will be an additional two weeks bump in and two weeks bump out. The planned activities and dates are outlined below:

- 30 Jun 2020 – Application for operation of Canberra Aqua Park submitted to NCA and TCCS.
- 15 Jul 2020 – Ordering of inflatables equipment (ropes, carabiners and chains).

- 1 Aug 2020 – Recruitment of marketing staff to promote Canberra Aqua Park to schools and corporates.
- 31 Aug 2020 – All permits and approvals to operate from NCA and TCCSS are received.
- 10 Sep 2020 – Engagement of additional lifeguards.
- 1 Oct 2020 – Operation Manager commence work.
- 1 Nov 2020 – Bump in.
- 14 Nov 2020 – Open day.
- 31 Jan 2021 – Closing day.
- 15 Feb 2021 – Bump out.

For season 2022, CAP is planned to be in operation between Saturday 13 Nov 2021 to Sunday 13 February 2022:

- 30 Oct 2021 – Bump in.
- 13 Nov 2021 – Open day.
- 13 Feb 2022 – Closing day.
- 28 Feb 2022 – Bump out.

For season 2023, CAP is planned to be in operation between Saturday 13 Nov 2021 to Sunday 13 February 2022:

- 30 Oct 2022 – Bump in.
- 12 Nov 2022 – Open day.
- 12 Feb 2023 – Closing day.
- 26 Feb 2023 – Bump out.

Goods Storage during Off-Season

The aqua park will be operational during warmer months only. All inflatable structures will be dismantled, packed and stored away at a remote location during off season. Grass underneath containers will be reinstated to TCCS specification.

Reinstatement Method

Canberra Aqua Park will provide a Make Good Clause guarantee. Upon permanent cessation of its operations, Canberra Aqua Park will be accountable to return the site to a pre-agreed state, which include removal of anchors on the lake bed and other structures on the land.