



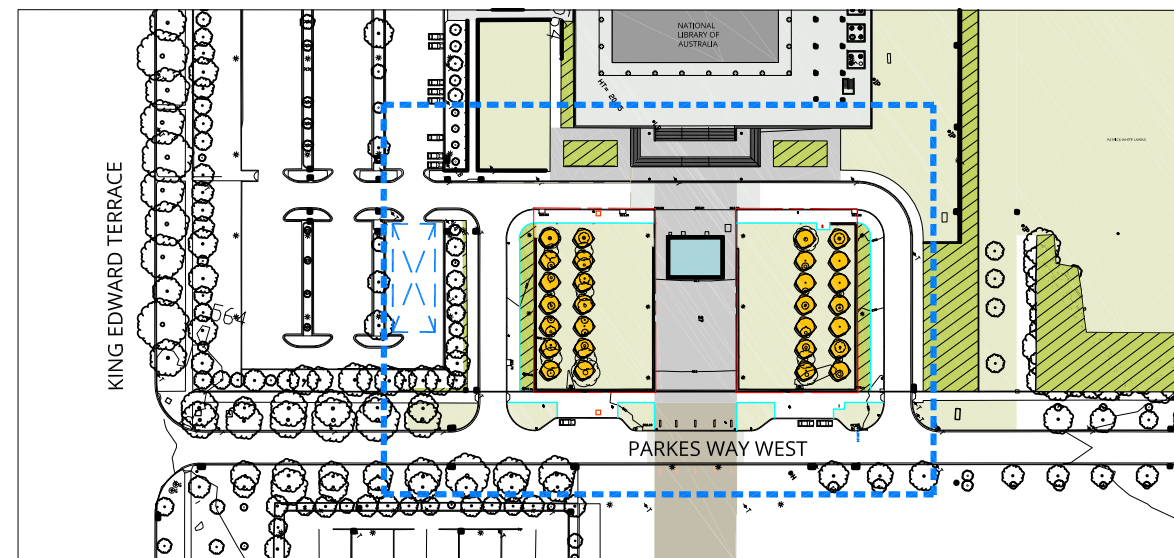
Australian Government
National Capital Authority

REMOVAL & REPLACEMENT OF LOMBARDY POPLARS AT THE NATIONAL LIBRARY OF AUSTRALIA

TENDER REVIEW

ISSUE: C
 DATE: 14.11.2018

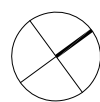
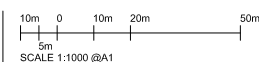
CONTEXT PLAN 1:1000



DRAWING SCHEDULE

Dwg No.	Drawing Title	Revision
L.000	COVER PAGE	C
LMPP.01	LANDSCAPE MANAGEMENT & PROTECTION PLAN	C
LMPP.02	LANDSCAPE MANAGEMENT & PROTECTION PLAN - NOTES	C
L.301	EXISTING CONDITIONS / DEMOLITION PLAN	B
L.302	GENERAL ARRANGEMENTS	C
L.303	GENERAL ARRANGEMENTS - DETAIL PLAN A	C
L.304	GENERAL ARRANGEMENTS - DETAIL PLAN B	C
L.801	LANDSCAPE DETAILS	C
L.802	LANDSCAPE DETAILS	B
L.803	LANDSCAPE DETAILS	B
Q1007-2A1	IRRIGATION PLAN	C
50518097-C-1001	COVERSHEET, DRAWING LIST AND LOCALITY PLAN	A
50518097-C-1005	TEMPORARY TRAFFIC MANAGEMENT PLAN	B
50518097-C-1010	SEDIMENT & EROSION CONTROL - NOTES & LEGEND	A
50518097-C-1011	SEDIMENT & EROSION CONTROL PLAN	D
50518097-C-1017	VEHICLE TURNING MOVEMENTS - OPTION 3	B

REVISION	DATE	AMENDMENT	DRAWN	CHECKED	APPROVED
A	23.07.2018	FINAL SKETCH PLAN - DRAFT	CB	RS	CF
B	14.08.2018	FINAL SKETCH PLAN	CB	RS	CF
C	14.11.2018	TENDER REVIEW	CB	RS	CF



© COPYRIGHT
 THIS DRAWING REMAINS THE PROPERTY OF CIA LANDSCAPES + COLOUR. IT MAY BE USED FOR THE PURPOSE FOR WHICH IT WAS COMMISSIONED AND IN ACCORDANCE WITH THE TERMS OF ENGAGEMENT FOR THAT COMMISSION. REPRODUCTION OF THIS WHOLE OR PART OF THE DOCUMENT CONSTITUTES AN INFRINGEMENT OF COPYRIGHT. THE INFORMATION, IDEAS AND CONCEPTS CONTAINED IN THIS DOCUMENT ARE PROHIBITED FROM DISCLOSING SUCH INFORMATION, IDEAS AND CONCEPTS TO ANY PERSON WITHOUT THE PRIOR WRITTEN CONSENT OF THE COPYRIGHT HOLDER.

**Cia
 landscapes
 +
 colour**

**36 Mildura Street Fyshwick ACT 2609
 Po Box 75 Red Hill
 ACT 2603**
**cialandscapesandcolour.com.au
 +61 02 6232 6582 / +61 04 1728 9042**

CLIENT



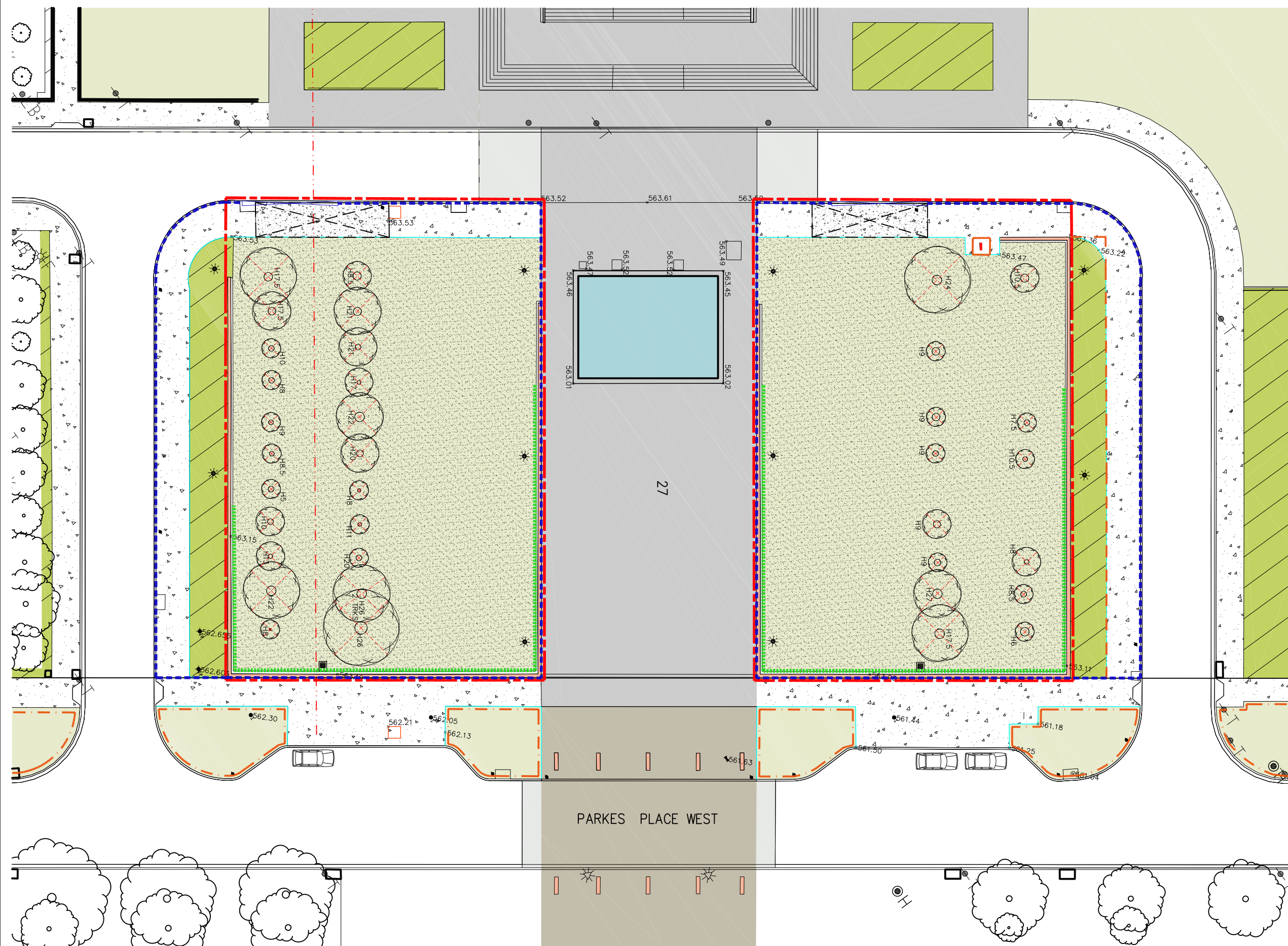
**Australian Government
 National Capital Authority**

DRAWING TITLE
 DRAWING USE

PROJECT
 PROJECT NUMBER
 DWG NO
 REVISION

COVER SHEET
 DOCUMENT REVIEW

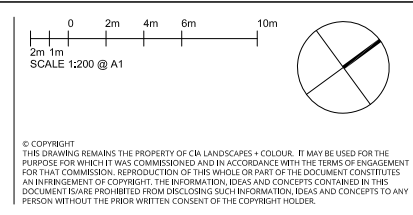
REMOVAL & REPLACEMENT OF LOMBARDY POPLARS
 AT THE NATIONAL LIBRARY OF AUSTRALIA
 18_004
 L000
 C



- LEGEND EXISTING**
- FIBRE OPTIC
 - LIGHTING
 - RETAINING WALL
 - GARDEN BEDS
 - CONCRETE PAVING
 - LAWN
 - FLAG POLE
 - GRANITE PAVING
 - INTERPRETATIVE SIGN
 - BOLLARDS
 - CONCRETE PATHS
- LEGEND PROPOSED**
- SITE BOUNDARY
 - REMOVE EXISTING *POPULUS NIGRA 'ITALICA'*
 - EXISTING TREES
 - LMPP - 1.8M HIGH PROTECTIVE FENCING
 - 1.8M HIGH SITE FENCING-REFER TTMP
 - SITE COMPOUND - REFER DWG 505180-97-C-1011
 - PROTECT EXIST. GLAZED BALUSTRADE
 - TURF
 - REPLACE SECTIONS OF DAMAGED CONCRETE
 - REINSTATE DISTURBED AREA

NOT FOR CONSTRUCTION

REVISION	DATE	AMENDMENT	DRAWN	CHECKED	APPROVED
A	23.07.2018	FINAL SKETCH PLAN-DRAFT	CB	RS	CF
B	14.08.2018	FINAL SKETCH PLAN	CB	RS	CF
C	14.11.2018	TENDER REVIEW	CB	RS	CF



**Cia
landscapes
+
colour**

**36 Mildura Street Fyshwick ACT 2609
Po Box 75 Red Hill
ACT 2603**
cialandscapesandcolour.com.au
+61 02 6232 6582 / +61 04 1728 9042

CLIENT
 **Australian Government
National Capital Authority**

DRAWING TITLE
DRAWING USE
PROJECT
PROJECT NUMBER
DWG NO
REVISION

**LANDSCAPE MANAGEMENT & PROTECTION PLAN
TENDER REVIEW**
**REMOVAL & REPLACEMENT OF LOMBARDY POPLARS
AT THE NATIONAL LIBRARY OF AUSTRALIA**
18_004
LMPP 01
C

LANDSCAPE MANAGEMENT AND PROTECTION PLAN

VERGE CONDITION
SECTION 27 PARKES ACT
THE VERGE VEGETATION COMPRISES OF EXOTIC TREE PLANTING, SHRUBS AND IRRIGATED GRASS

PROTECTION OF PUBLIC LANDSCAPE ASSETS ADJACENT TO DEVELOPMENT WORKS
THE LANDSCAPE MANAGEMENT AND PROTECTION PLAN HAS BEEN PREPARED ACCORDING TO THE GUIDELINES FOR THE PROTECTION OF PUBLIC LANDSCAPE ASSETS ADJACENT TO THE DEVELOPMENT WORKS WITH THE PURPOSE TO PROTECT PUBLIC ASSETS FROM DAMAGE DURING THE DEVELOPMENT ACTIVITIES.

DEFINITION TERMS AND ABBREVIATIONS

WORKS APPROVAL (WA) / NATIONAL CAPITAL AUTHORITY WORKS APPROVAL MANAGER. (PLANNING AND URBAN DESIGN). DELEGATE IS DIRECTOR, DEVELOPMENT, ASSESSMENTS AND HERITAGE.
WORKS APPROVAL IS A SECTION OF THE NATIONAL CAPITAL AUTHORITY RESPONSIBLE FOR COORDINATING THE NOMINATED CAPITAL WORKS DESIGN AND CONSTRUCTION ACCEPTANCE PROCESS.

DEVELOPMENT WORKS

REFERS TO ALL WORKS ON THE SITES OR ON AREAS ADJACENT TO THE SITE INCLUDING DEMOLITION, SITE PREPARATION, BUILDING AND CIVIL ENGINEERING WORKS AND THE INSTALLATION OF UTILITY SERVICES.
ACTIVITIES INCLUDE VEHICLE AND EQUIPMENT ACCESS, MATERIALS DELIVERY AND STORAGE, PROVISION OF SITE SERVICES AND FACILITIES, SITE EXCAVATION ETC.

LANDSCAPE MANAGEMENT AND PROTECTION PLAN (LMPP)
THE LMPP IS A DRAWING WITH DETAILED NOTES THAT DESCRIBE ASSETS ON NATIONAL LAND INCLUDING ROAD RESERVES, STREET VERGES AND PUBLIC OPEN SPACE ADJACENT TO THE DEVELOPMENT.
WORKS ARE TO BE CARRIED OUT IN COMPLIANCE WITH THE APPROVED LANDSCAPE MANAGEMENT AND PROTECTION PLAN (LMPP), THE LMPP FORMS PART OF THE DEVELOPMENT CONDITIONS FOR THE SITE AND IS PART OF THE CONSTRUCTION DOCUMENTS.

TEMPORARY TRAFFIC MANAGEMENT PLAN (TTMP)
A PLAN APPROVED BY THE DELEGATE OF THE ROAD AUTHORITY AUTHORISING THE ERECTION AND REMOVAL OF ANY TEMPORARY TRAFFIC CONTROL DEVICES EG. SIGNS, BARRICADES, TRAFFIC CONES, ETC UNDER THE PROVISIONS OF THE ROAD TRANSPORT SAFETY AND TRAFFIC MANAGEMENT Act.

ROADS AND PUBLIC PLACES OPENING PERMIT
A PERMIT ISSUED UNDER SECTION 9 OF THE ROAD AND PUBLIC PLACES ACT 1937 WHICH GRANTS PERMISSION TO MAKE OR PLACE A CULVERT, BRIDGE,CROSSING OR DRAIN ACROSS A WATER TABLE, WATER COURSE OR FOOTPATH, OR TO OPEN UP OR BREAK THE SURFACE OF THE ROAD OR PUBLIC PLACE.

LANDSCAPE MANAGEMENT AND PROTECTION PLANS (LMPP) COMPLIANCE WITH LANDSCAPE MANAGEMENT AND PROTECTION PLANS
WORKS ARE TO BE CARRIED OUT IN COMPLIANCE WITH THE APPROVED LANDSCAPE MANAGEMENT AND PROTECTION PLAN (LMPP). THE LMPP FORMS PART OF THE DEVELOPMENT CONDITIONS FOR THE SITE AND IS PART OF THE CONSTRUCTION DOCUMENTS.

ON-SITE MANAGEMENT OF VERGES AND OPEN SPACE - GENERAL
BEFORE COMMENCING WORKS, THE CONTRACTOR MUST ADVISE THE SUPERINTENDENT IN WRITING THAT THE PROTECTIVE MEASURES HAVE BEEN INSTALLED IN ACCORDANCE WITH THE APPROVED LMPP.

ALL DEVELOPMENT WORK MUST BE CONTAINED WITHIN THE SITE EXCEPT APPROVED SERVICE CONNECTIONS IN VERGES. NOTE THE WORKS WILL REQUIRE THE PROVISION FOR APPROVED TEMPORARY TRAFFIC MANAGEMENT PLAN, WHICH WILL INFLUENCE THE LMPP REQUIREMENTS.

DURING THE PROJECT, ALL EXISTING VERGE GRASS COVER MUST BE RETAINED IN ITS PREEXISTING CONDITION. WATERING MAY BE REQUIRED TO RETAIN GRASS AND TREES IN GOOD CONDITION.

SUPERVISION

THE CONTRACTOR IS TO ADVISE THE SUPERINTENDENT 5 WORKING DAYS PRIOR TO COMMENCING WORKS IN VERGE . A QUALIFIED LANDSCAPE ARCHITECT OR HORTICULTURISTS MUST OVERSEE WORK IN THE VERGE TO ENSURE ALL REQUIREMENTS ARE FOLLOWED. THEY MUST BE PRESENT DURING ANY CULTIVATION/RESTORATION OF THE VERGE WHICH AFFECTS PLANT MATERIAL.

SITE ACCOMMODATION

GENERALLY, SITE SHEDS, STORAGE FACILITIES OR BILLBOARDS ARE NOT TO BE ERECTED ON VERGES OF PUBLIC OPEN SPACE, HOWEVER AN APPLICATION MAY BE LODGED TOGETHER WITH THE LMPP, WITH THE NCA , FOR THE USE OF VERGES, PUBLIC OPEN SPACES OR UNLEASED LAND.

PROTECTIVE FENCING
ALL TEMPORARY PROTECTIVE FENCES SHALL BE ERECTED TO PROTECT NCA ASSETS ON NATIONAL LAND AND TO BE IN ACCORDANCE WITH THE APPROVED LMPP DRAWINGS.

FENCE OFF EXISTING TREE PLANTINGS AND GRASS TO ENCLOSE THE STREET VERGE, PUBLIC OPEN SPACE OR UNLEASED TERRITORY LAND AREA. THE LOCATION OF THE PROTECTIVE FENCING WILL BE: 1.2M BACK FROM THE EDGE OF THE KERB FOR THE FULL EXTENT OF THE LEASE, ALONG THE PROPERTY BOUNDARY AND ALONG APPROVED DRIVEWAY ACCESS TO ENSURE THAT ALL OF THE VERGE IS COMPLETELY ENCLOSED.

FENCING MUST BE ERECTED BEFORE THE COMMENCEMENT OF ANY SITE WORKS AND REMOVAL AT COMPLETION OF ALL CONSTRUCTION AND COMMENCEMENT OF VERGE RESTORATION. THE FENCE IS TO REMAIN CONTINUOUS THROUGHOUT THE PROJECT.

MATERIALS

USE OF TEMPORARY 1800MM HIGH CONTINUOUS MESH FENCE SUPPORTED BY STEEL POSTS WITH APPROVED HEAVY DUTY BASE IS MANDATORY. VARIATION FROM THIS REQUIREMENT MUST BE ACCOMPANIED BY WRITTEN AGREEMENT FROM ASSET ACCEPTANCE,

PEDESTRIAN AND TRAFFIC CONSIDERATIONS
EXISTING VERGE FOOTPATHS TO BE MAINTAINED AND MUST REMAIN UNOBSTRUCTED THROUGHOUT THE CONSTRUCTION PERIOD , TO PROVIDE SAFE PEDESTRIAN MOVEMENT AT ALL TIMES.

WHERE A CONSTRUCTED FOOTPATH OR CYCLE WAY EXISTS WITHIN THE VERGE, PROTECTIVE FENCING MUST IN ALL CASES BE SETBACK 0.6M FROM EACH SIDE OF FOOTPATH/CYCLEWAY TO ENSURE SAFE PASSAGE FOR CYCLIST AND PEDESTRIANS.

EXISTING TREES
GENERAL
ALL TREES LOCATED IN THE VERGE AND PUBLIC OPEN SPACE AND ON UNLEASED COMMONWEALTH LAND ARE TO BE RETAINED AND REMAIN UNDAMAGED. WRITTEN AUTHORISATION FROM NCA WORKS APPROVAL IS REQUIRED IF ANY PLANT MATERIAL IS TO BE DISTURBED AS PART OF THE CONSTRUCTION. THIS APPROVAL WILL BE GIVEN AS PART OF THE LMPP.

EXISTING CANOPY CLEARANCE IS NOT TO ALTERED, CROWNS AND APEX OF CANOPIES ARE NOT TO BE ALTERED OR REDUCED. ENSURE LIFTING EQUIPMENT AND LOAD CAN CLEAR HEIGHT AND WIDTH OF TREES CANOPY WITHOUT DAMAGE TO THE CROWN. ENSURE CONSTRUCTION EQUIPMENT CAN PASS BENEATH THE LOWEST LIMP, THROUGH DRIVEWAY ACCESS.

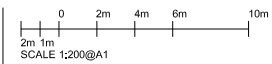
TREE ROOT PROTECTION
THE MAJORITY OF TREE ROOTS GROW IN THE TOP 300MM OF SOIL. THESE ARE THE FEEDER ROOTS, OFTEN VERY FINE ROOTS THAT PROVIDE THE TREE WITH WATER, OXYGEN AND NUTRIENTS. THESE ROOTS TYPICALLY GROW BETWEEN THE TREE'S TRUNK TO WELL BEYOND THE TREE CANOPY EDGE WHICH IS KNOWN AS THE TREE PROTECTION ZONE (TPZ).

EXCAVATION WITHIN THE TPZ OF A TREE DOES CONSIDERABLE DAMAGE TO IT'S ROOT SYSTEM. IT CAN AFFECT TREE STABILITY AND TREE HEALTH TO SUCH AN EXTENT THAT IT WILL LEAD TO DECLINE AND POSSIBLE DEATH OF THE TREE OVER A PERIOD OF YEARS. EXCAVATION WHICH OCCURS WITHIN THE TPZ MUST BE APPROVED. APPROVAL CAN BE SOUGHT THROUGH THE NATIONAL CAPITAL AUTHORITY WORKS APPROVAL .

SITE ACCESS
SITE ACCESS MUST BE LIMITED TO AREAS ON THE APPROVED LMPP, IF NOT INDICATED, ACCESS IS TO INITIALLY BE BY THE EXISTING DRIVEWAY ACCESS POINTS FOR THE NEW DEVELOPMENT.
IN SOME CASE, CONSIDERATION MAY BE GIVEN TO ALLOWING THE NEW ACCESS POINTS ACROSS PUBLIC LAND. APPROVAL FOR ALTERNATIVE OR ADDITIONAL ACCESS POINTS MUST BE OBTAINED THROUGH ASSET ACCEPTANCE. IN SUCH CASES, THE SITE ACCESS MUST BE POSITIONED MIDWAY BETWEEN THE EXISTING TREE TRUNKS. THIS, HOWEVER IS DEPENDENT ON THE DISTANCE BETWEEN TREES. IN SOME CASES TREES MAY BE TOO CLOSE TO ALLOW ACCESS. ACCESS IS NOT TO OCCUR ON TWO SIDES OF A TREE. CONSTRUCTION TECHNIQUES SHOULD MINIMISE THE NEED FOR EXCAVATION CROSS THE VERGE. ACCESS ACROSS ADJOINING PUBLIC LAND OPEN SPACES, PARKS, RECREATIONAL RESERVES, ADJOINING PROPERTIES IS PROHIBITED WITHOUT WRITTEN APPROVAL AUTHORISATION FROM THE NATIONAL CAPITAL AUTHORITY.

NOT FOR CONSTRUCTION

Table with 5 columns: REVISION, DATE, AMENDMENT, DRAWN, CHECKED, APPROVED. Contains revision history for the drawing.



© COPYRIGHT
THIS DRAWING REMAINS THE PROPERTY OF CIA LANDSCAPES + COLOUR. IT MAY BE USED FOR THE PURPOSE FOR WHICH IT WAS COMMISSIONED AND IN ACCORDANCE WITH THE TERMS OF ENGAGEMENT FOR THAT COMMISSION. REPRODUCTION OF THIS WHOLE OR PART OF THE DOCUMENT CONSTITUTES AN INFRINGEMENT OF COPYRIGHT. THE INFORMATION, IDEAS AND CONCEPTS CONTAINED IN THE DOCUMENT IS/ARE PROHIBITED FROM DISCLOSING SUCH INFORMATION, IDEAS AND CONCEPTS TO ANY PERSON WITHOUT THE PRIOR WRITTEN CONSENT OF THE COPYRIGHT HOLDER.



36 Mildura Street Fyshwick ACT 2609
Po Box 75 Red Hill ACT 2603

cialandscapesandcolour.com.au
+61 02 6232 6582 / +61 04 1728 9042

CLIENT



Australian Government
National Capital Authority

DRAWING TITLE
DRAWING USE

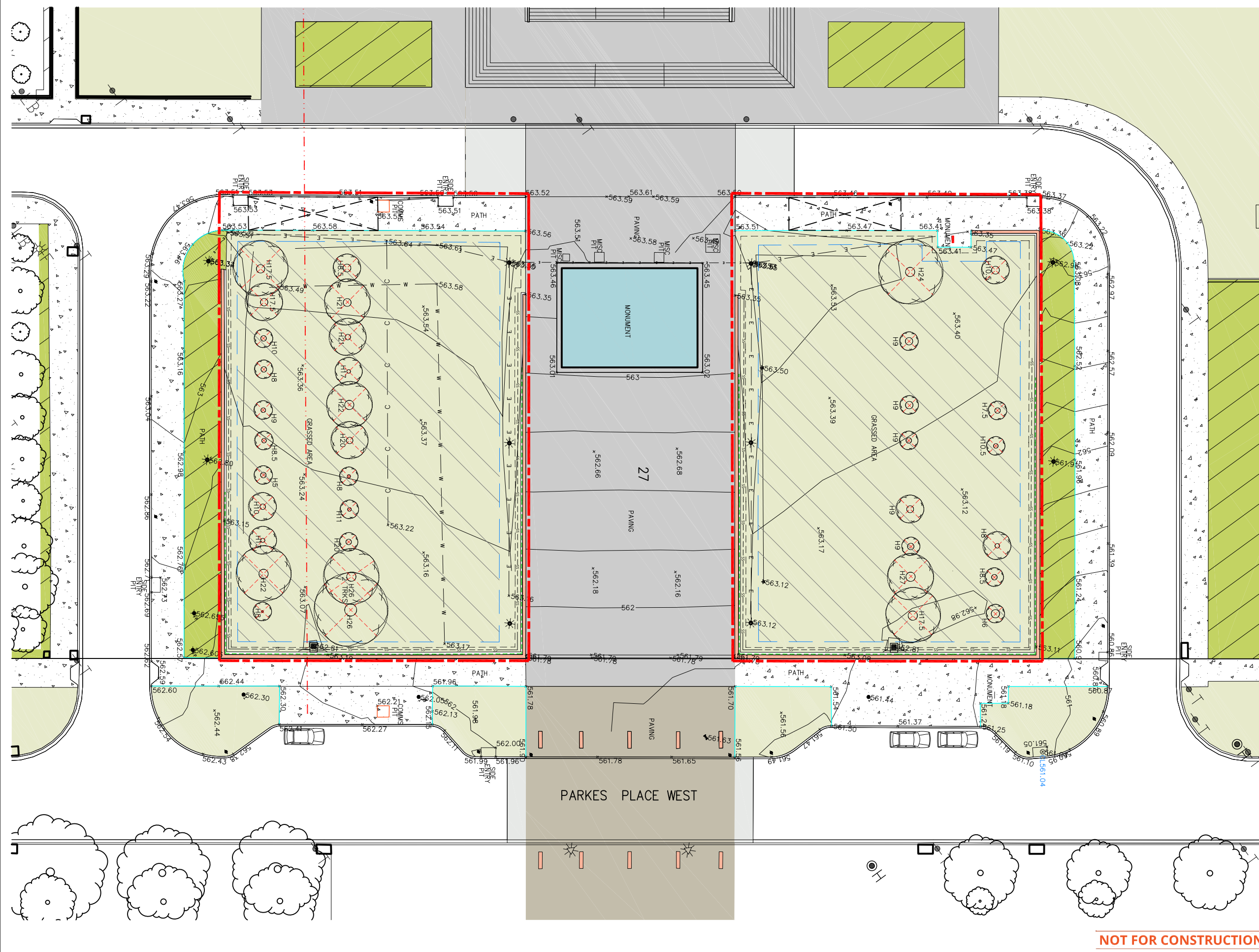
LANDSCAPE MANAGEMENT & PROTECTION PLAN - NOTES
TENDER REVIEW

PROJECT

REMOVAL & REPLACEMENT OF LOMBARDY POPLARS
AT THE NATIONAL LIBRARY OF AUSTRALIA

PROJECT NUMBER
DWG NO
REVISION

18_004
LMPP 02
C



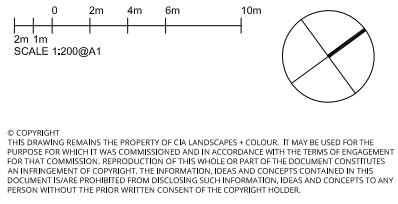
- LEGEND**
PROPOSED DEMOLITION
- SITE BOUNDARY
 - REMOVE EXISTING *POPULUS NIGRA 'ITALICA'* INCLUDING ROOTBALL
 - STRIP EXIST. GRASS, TOPSOIL & SUBGRADE INCL. EXIST IRRIGATION
 - SPLAY REMOVAL OF EXIST TOPSOIL & SUBGRADE TO ADJACENT EDGE
 - CUT EXISTING TREE ROOTS (adjacent to pavement & mowing strip)
 - REMOVE DAMAGED SECTIONS OF CONCRETE PATH
 - PROTECT EXIST. BALUSTRADE WITH GLAZED PANELS

NOTES:
LOCATE ALL SERVICES PRIOR TO COMMENCEMENT OF WORKS
PROTECT ALL ADJACENT EXISTING INFRASTRUCTURE

- LEGEND**
EXISTING CONDITIONS
- WATER
 - COMMUNICATIONS
 - FIBRE OPTIC
 - ELECTRICAL
 - LIGHTING
 - RETAINING WALL & SUBSOIL DRAIN
 - CONTOURS
 - SPOT HEIGHTS
 - GARDEN BEDS
 - MOWING STRIP
 - CONCRETE PAVING
 - LAWN
 - FLAG POLE
 - GRANITE PAVING
 - CONCRETE PAVEMENT
 - CONCRETE PAVEMENT
 - INTERPRETATIVE SIGN
 - EXISTING TREES
 - EXIST. SW GRATED SUMP

NOT FOR CONSTRUCTION

REVISION	DATE	AMENDMENT	DRAWN	CHECKED	APPROVED
A	14.08.2018	FINAL SKETCH PLAN	CB	RS	CF
B	14.11.2018	TENDER REVIEW	CB	RS	CF



Cia
landscapes
+
colour

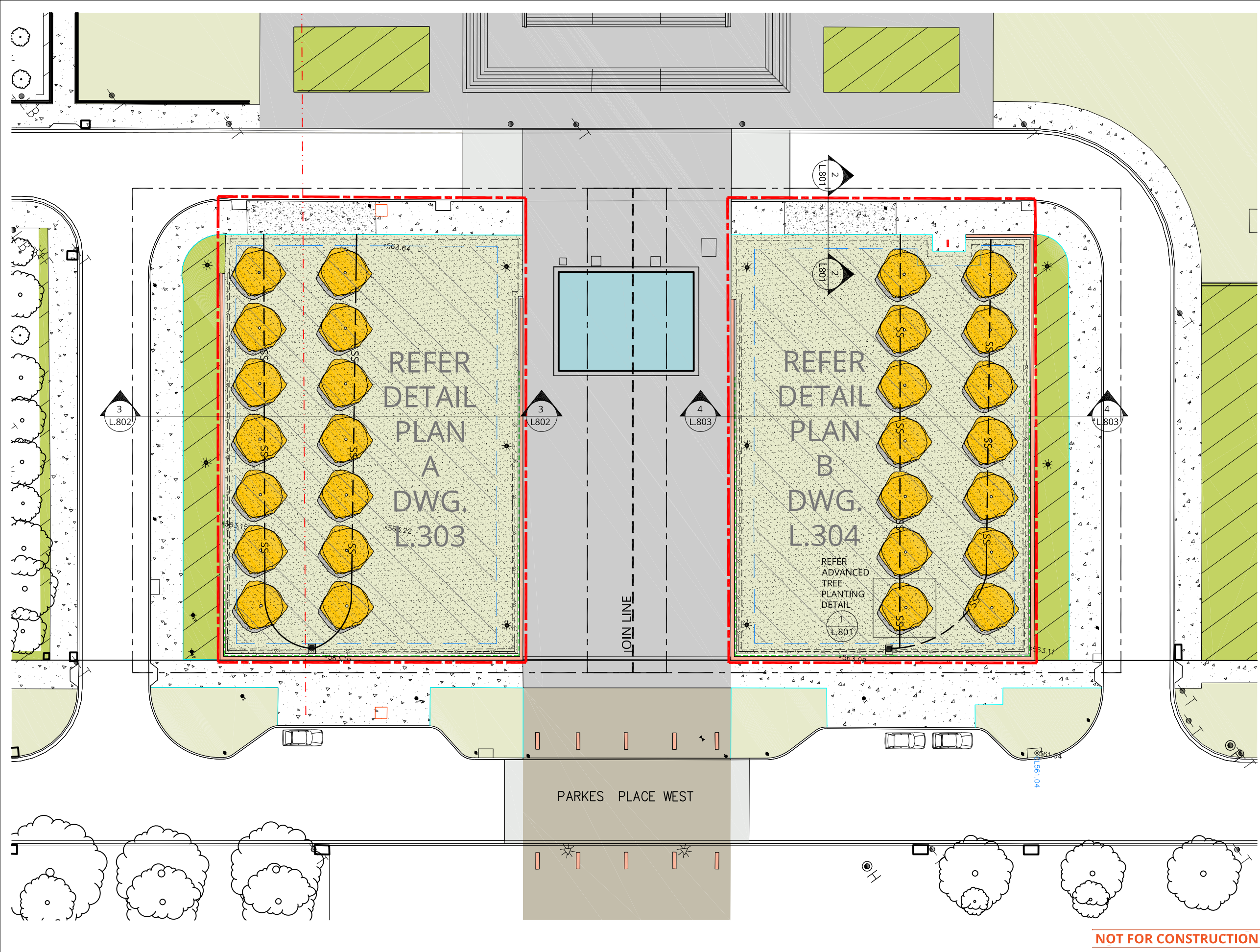
36 Mildura Street Fyshwick ACT 2609
Po Box 75 Red Hill ACT 2603
cialandscapesandcolour.com.au
+61 02 6232 6582 / +61 04 1728 9042

CLIENT
 Australian Government
National Capital Authority

DRAWING TITLE
DRAWING USE
PROJECT
PROJECT NUMBER
DWG NO
REVISION

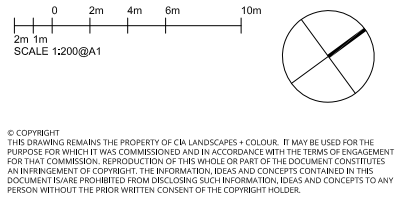
EXISTING CONDITIONS / DEMOLITION PLAN
TENDER REVIEW
REMOVAL & REPLACEMENT OF LOMBARDY POPLARS
AT THE NATIONAL LIBRARY OF AUSTRALIA
18_004
L.301
B

© COPYRIGHT
THIS DRAWING REMAINS THE PROPERTY OF CIA LANDSCAPES + COLOUR. IT MAY BE USED FOR THE PURPOSE FOR WHICH IT WAS COMMISSIONED AND IN ACCORDANCE WITH THE TERMS OF ENGAGEMENT FOR THAT COMMISSION. REPRODUCTION OF THIS WHOLE OR PART OF THE DOCUMENT CONSTITUTES AN INFRINGEMENT OF COPYRIGHT. THE INFORMATION, IDEAS AND CONCEPTS CONTAINED IN THIS DOCUMENT IS/ARE PROHIBITED FROM DISCLOSURE TO ANY OTHER PERSON WITHOUT THE PRIOR WRITTEN CONSENT OF THE COPYRIGHT HOLDER.



- LEGEND - PROPOSED WORKS**
- SITE BOUNDARY
 - SEMI ADVANCED PLANTS - SPECIES TO BE DETERMINED (planted @ 6m c/c's)
 - IRRIGATED TURF (Canberra blend - tall fescue & kentucky blue grass) on imported topsoil
 - FLUSH EXIST. AG DRAIN AS SPEC
 - 100 DIA. AG DRAIN AS SPEC CONNECTED TO SW GRATED SUMP
 - PROTECT EXIST. GLAZED BALUSTRADE
 - CUT EXISTING TREE ROOTS (adjacent to pavement & mowing strip)
 - REPLACE SECTIONS OF DAMAGED CONCRETE REFER DETAIL SECTION
 - CONTOURS
 - SPOT HEIGHTS
- LEGEND - EXISTING WORKS**
- WATER
 - COMMUNICATIONS
 - FIBRE OPTIC
 - ELECTRICAL
 - LIGHTING
 - SUBSOIL DRAIN
 - RETAINING WALL
 - CONTOURS
 - SPOT HEIGHTS
 - GARDEN BEDS
 - MOWING STRIP
 - CONCRETE PAVING
 - LAWN
 - FLAG POLE
 - GRANITE PAVEMENT
 - CONCRETE PAVEMENT
 - INTERPRETATIVE SIGN
 - EXIST. SW GRATED SUMP
- NOTES:**
 LOCATE ALL SERVICES PRIOR TO COMMENCEMENT OF WORKS
 PROTECT ALL ADJACENT EXISTING INFRASTRUCTURE

REVISION	DATE	AMENDMENT	DRAWN	CHECKED	APPROVED
A	23.07.2018	FINAL SKETCH PLAN-DRAFT	CB	RS	CF
B	14.08.2018	FINAL SKETCH PLAN	CB	RS	CF
C	14.11.2018	TENDER REVIEW	CB	RS	CF



**Cia
landscapes
+
colour**

**36 Mildura Street Fyshwick ACT 2609
Po Box 75 Red Hill
ACT 2603**

cialandscapesandcolour.com.au
 +61 02 6232 6582 / +61 04 1728 9042

CLIENT
**Australian Government
National Capital Authority**

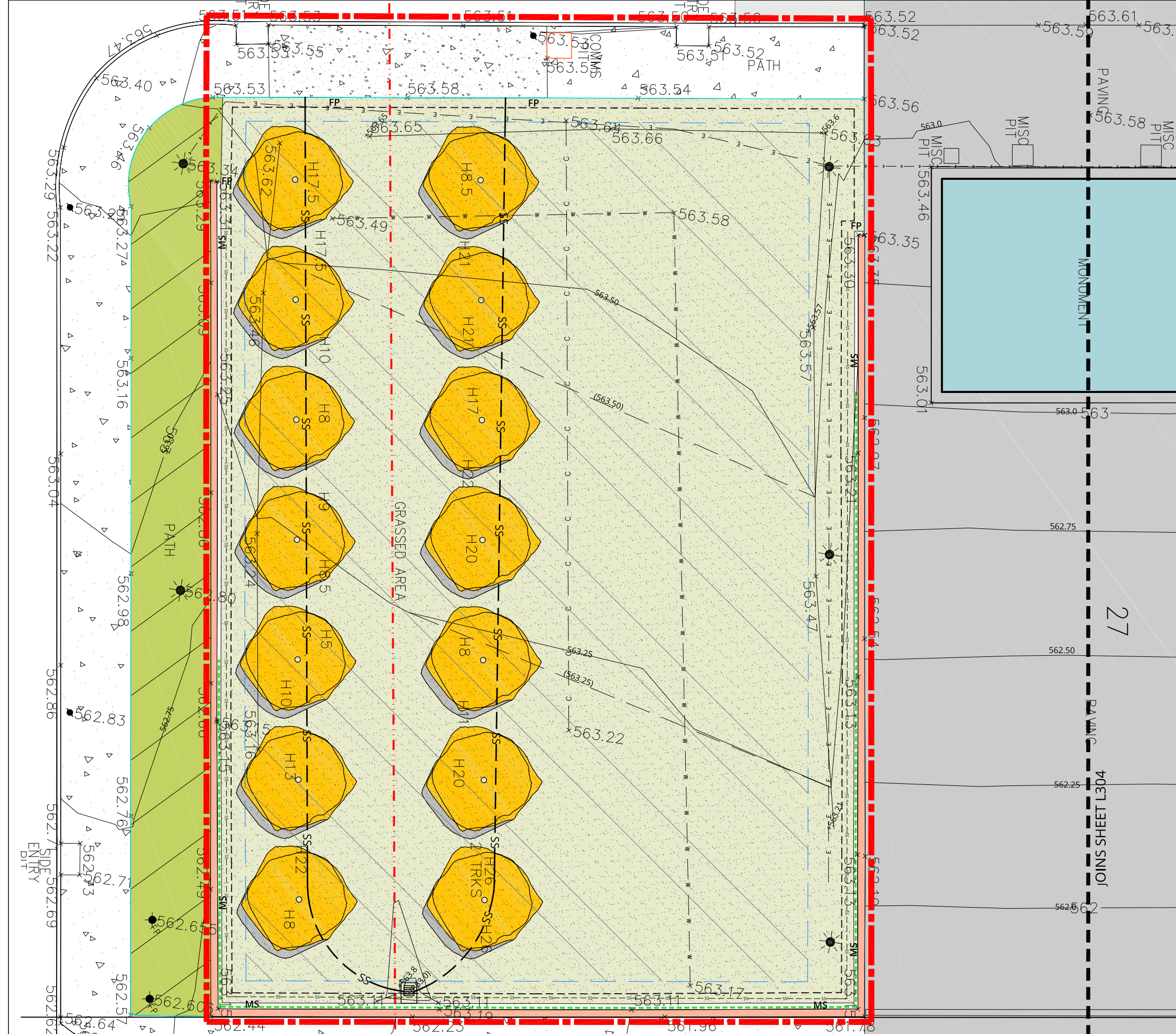
DRAWING TITLE
DRAWING USE

 PROJECT
 PROJECT NUMBER
DWG NO
REVISION

GENERAL ARRANGEMENTS
TENDER REVIEW

 REMOVAL & REPLACEMENT OF LOMBARDY POPLARS
AT THE NATIONAL LIBRARY OF AUSTRALIA
 18_004
 L.302
 C

NOT FOR CONSTRUCTION

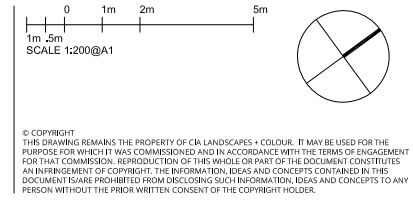


- | LEGEND EXISTING | | LEGEND PROPOSED | |
|-----------------|-----------------------|-----------------|---|
| | WATER | | SITE BOUNDARY |
| | COMMUNICATIONS | | SEMI-ADVANCED PLANTS - SPECIES TO BE DETERMINED (planted @ 6m c/c's) |
| | FIBRE OPTIC | | IRRIGATED TURF (Canberra blend - tall fescue & kentucky blue grass) on imported topsoil |
| | ELECTRICAL | | FLUSH EXIST. AG DRAIN AS SPEC |
| | LIGHTING | | 100 DIA. AG DRAIN AS SPEC CONNECTED TO SW GRATED SUMP |
| | SUBSOIL DRAIN | | PROTECT EXIST. GLAZED BALUSTRADE |
| | RETAINING WALL | | CUT EXISTING TREE ROOTS (adjacent to pavement & mowing strip) |
| | CONTOURS | | REPLACE SECTIONS OF DAMAGED CONCRETE REFER DETAIL DRAWING CONTOURS |
| | SPOT HEIGHTS | | SPOT HEIGHTS |
| | GARDEN BEDS | | |
| | MOWING STRIP | | |
| | CONCRETE PAVING | | |
| | LAWN | | |
| | FLAG POLE | | |
| | GRANITE PAVEMENT | | |
| | CONCRETE PAVEMENT | | |
| | INTERPRETATIVE SIGN | | |
| | EXIST. SW GRATED SUMP | | |

NOTES:
 LOCATE ALL SERVICES PRIOR TO COMMENCEMENT OF WORKS
 PROTECT ALL ADJACENT EXISTING INFRASTRUCTURE

NOT FOR CONSTRUCTION

REVISION	DATE	AMENDMENT	DRAWN	CHECKED	APPROVED
A	23.07.2018	FINAL SKETCH PLAN-DRAFT	CB	RS	CF
B	14.08.2018	FINAL SKETCH PLAN	CB	RS	CF
C	14.11.2018	TENDER REVIEW	CB	RS	CF

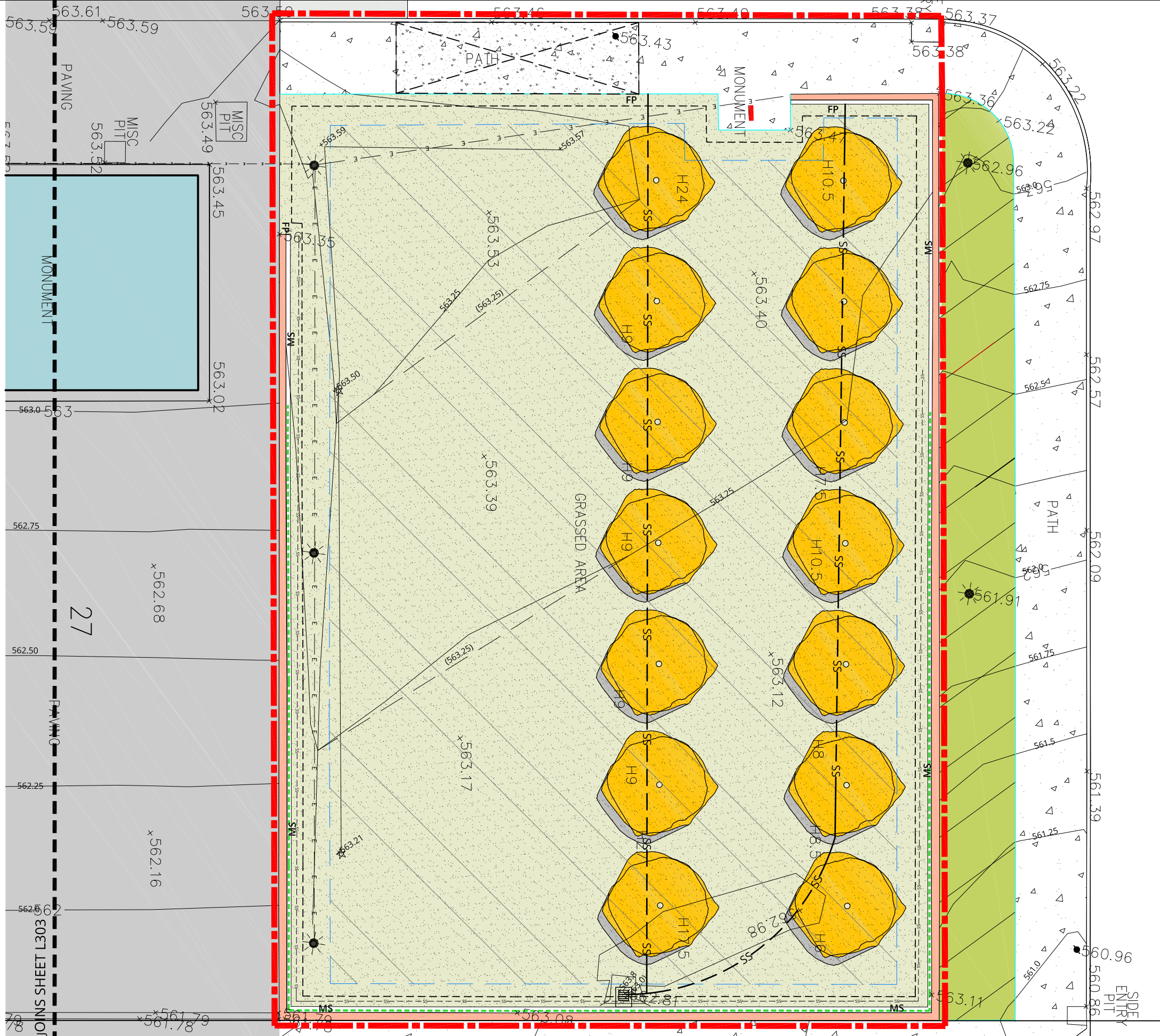


**Cia
landscapes
+
colour**

**36 Mildura Street Fyshwick ACT 2609
 Po Box 75 Red Hill
 ACT 2603**
 cialandscapesandcolour.com.au
 +61 02 6232 6582 / +61 04 1728 9042



DRAWING TITLE DRAWING USE	GENERAL ARRANGEMENTS -DETAIL PLAN A TENDER REVIEW
PROJECT	REMOVAL & REPLACEMENT OF LOMBARDY POPLARS AT THE NATIONAL LIBRARY OF AUSTRALIA
PROJECT NUMBER	18_004
DWG NO	L303
REVISION	C



- | LEGEND EXISTING | | LEGEND PROPOSED | |
|-----------------|-----------------------|-----------------|---|
| | WATER | | SITE BOUNDARY |
| | COMMUNICATIONS | | SEMI ADVANCED PLANTS - SPECIES TO BE DETERMINED (planted @ 6m c/c's) |
| | FIBRE OPTIC | | IRRIGATED TURF (Canberra blend - tall fescue & kentucky blue grass) on imported topsoil |
| | ELECTRICAL | | FLUSH EXIST. AG DRAIN AS SPEC |
| | LIGHTING | | 100 DIA. AG DRAIN AS SPEC CONNECTED TO SW GRATED SUMP |
| | SUBSOIL DRAIN | | PROTECT EXIST. GLAZED BALUSTRADE |
| | RETAINING WALL | | CUT EXISTING TREE ROOTS (adjacent to pavement & mowing strip) |
| | CONTOURS | | REPLACE SECTIONS OF DAMAGED CONCRETE REFER DETAIL DRAWING |
| | SPOT HEIGHTS | | CONTOURS |
| | GARDEN BEDS | | SPOT HEIGHTS |
| | MOWING STRIP | | |
| | CONCRETE PAVING | | |
| | LAWN | | |
| | FLAG POLE | | |
| | GRANITE PAVEMENT | | |
| | CONCRETE PAVEMENT | | |
| | INTERPRETATIVE SIGN | | |
| | EXIST. SW GRATED SUMP | | |

NOTES:
 LOCATE ALL SERVICES PRIOR TO COMMENCEMENT OF WORKS
 PROTECT ALL ADJACENT EXISTING INFRASTRUCTURE

NOT FOR CONSTRUCTION

REVISION	DATE	AMENDMENT	DRAWN	CHECKED	APPROVED
A	23.07.2018	FINAL SKETCH PLAN-DRAFT	CB	RS	CF
B	14.08.2018	FINAL SKETCH PLAN	CB	RS	CF
C	14.11.2018	TENDER REVIEW	CB	RS	CF

0 1m 2m 5m
 1m 5m
 SCALE 1:100@A1

© COPYRIGHT
 THIS DRAWING REMAINS THE PROPERTY OF Cia LANDSCAPES + COLOUR. IT MAY BE USED FOR THE PURPOSE FOR WHICH IT WAS COMMISSIONED AND IN ACCORDANCE WITH THE TERMS OF ENGAGEMENT FOR THAT COMMISSION. REPRODUCTION OF THIS WHOLE OR PART OF THE DOCUMENT CONSTITUTES AN INFRINGEMENT OF COPYRIGHT. THE INFORMATION, IDEAS AND CONCEPTS CONTAINED IN THIS DOCUMENT IS/ARE PROHIBITED FROM DISCLOSURE SUCH INFORMATION, IDEAS AND CONCEPTS TO ANY PERSON WITHOUT THE PRIOR WRITTEN CONSENT OF THE COPYRIGHT HOLDER.

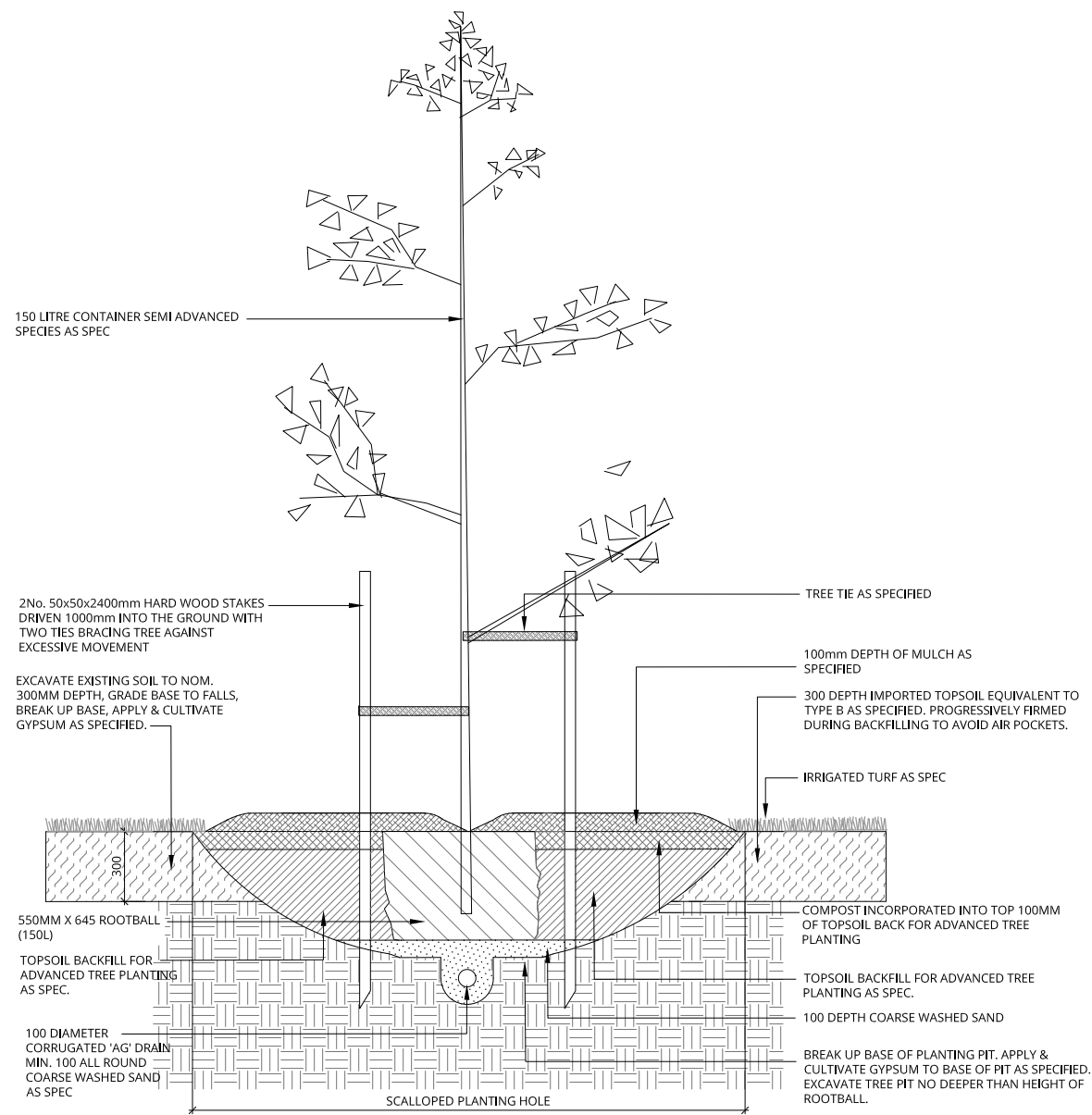
**Cia
landscapes
+
colour**

**36 Mildura Street Fyshwick ACT 2609
 Po Box 75 Red Hill
 ACT 2603**
 cialandscapesandcolour.com.au
 +61 02 6232 6582 / +61 04 1728 9042

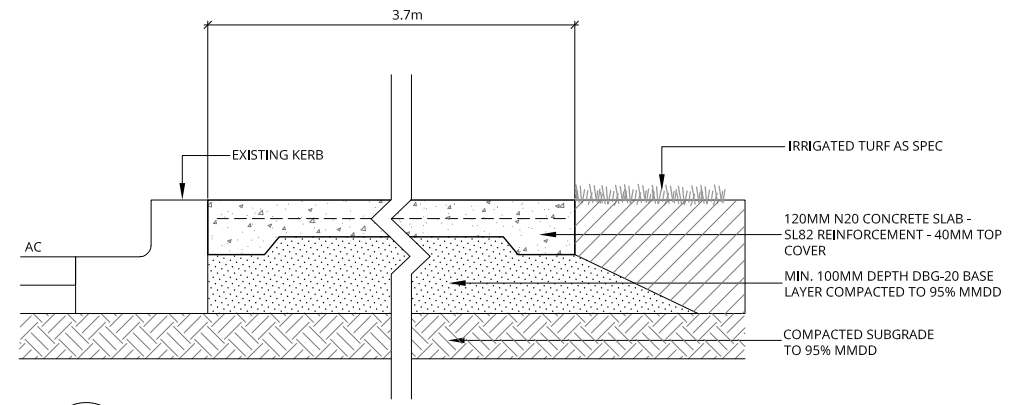
CLIENT

**Australian Government
National Capital Authority**

DRAWING TITLE	GENERAL ARRANGEMENTS - DETAIL PLAN B
DRAWING USE	TENDER REVIEW
PROJECT	REMOVAL & REPLACEMENT OF LOMBARDY POPLARS AT THE NATIONAL LIBRARY OF AUSTRALIA
PROJECT NUMBER	18_004
DWG NO	L.304
REVISION	C



01 ADVANCED TREE PLANTING DETAIL
L.302 SCALE 1:20



02 CONCRETE PATH
L.302 SCALE 1:20

REVISION	DATE	AMENDMENT	DRAWN	CHECKED	APPROVED
A	23.07.2018	FINAL SKETCH PLAN - DRAFT	CB	RS	CF
B	14.08.2018	FINAL SKETCH PLAN	CB	RS	CF
C	14.11.2018	TENDER REVIEW	CB	RS	CF

SCALE A1

© COPYRIGHT
THIS DRAWING REMAINS THE PROPERTY OF CIA LANDSCAPES + COLOUR. IT MAY BE USED FOR THE PURPOSE FOR WHICH IT WAS COMMISSIONED AND IN ACCORDANCE WITH THE TERMS OF ENGAGEMENT FOR THAT COMMISSION. REPRODUCTION OF THIS WHOLE OR PART OF THIS DOCUMENT CONSTITUTES AN INFRINGEMENT OF COPYRIGHT. THE INFORMATION, IDEAS AND CONCEPTS CONTAINED IN THIS DOCUMENT ARE PROHIBITED FROM DISCLOSURE TO ANY PERSON WITHOUT THE PRIOR WRITTEN CONSENT OF THE COPYRIGHT HOLDER.

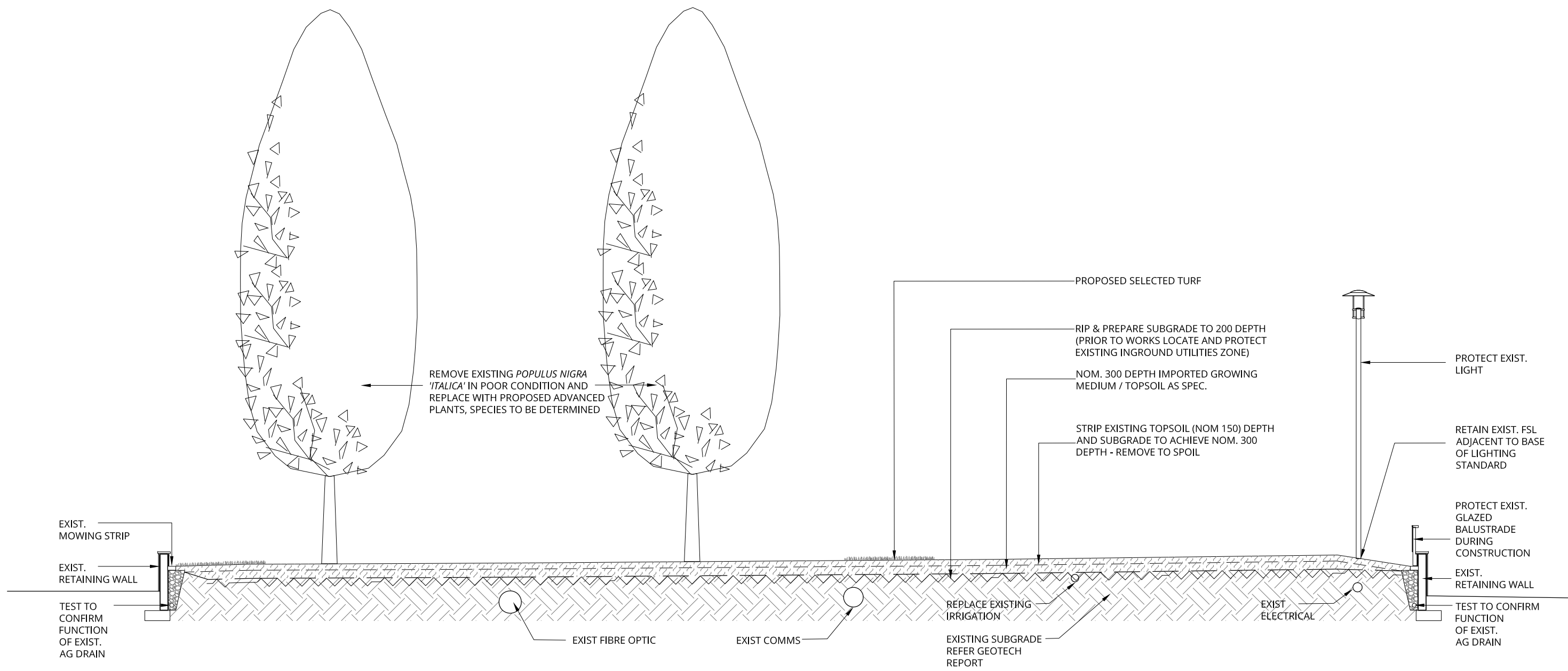


36 Mildura Street Fyshwick ACT 2609
Po Box 75 Red Hill ACT 2603
cialandscapesandcolour.com.au
+61 02 6232 6582 / +61 04 1728 9042

CLIENT



DRAWING TITLE	LANDSCAPE DETAILS
DRAWING USE	TENDER REVIEW
PROJECT	REMOVAL & REPLACEMENT OF LOMBARDY POPLARS AT THE NATIONAL LIBRARY OF AUSTRALIA
PROJECT NUMBER	18_004
DWG NO	L.801
REVISION	C



TERRACE A SECTION 3-3
SCALE 1:50

REVISION	DATE	AMENDMENT	DRAWN	CHECKED	APPROVED
A	14.08.2018	FINAL SKETCH PLAN	CB	RS	CF
B	14.11.2018	TENDER REVIEW	CB	RS	CF

SCALE A1

© COPYRIGHT
THIS DRAWING REMAINS THE PROPERTY OF CIA LANDSCAPES + COLOUR. IT MAY BE USED FOR THE PURPOSE FOR WHICH IT WAS COMMISSIONED AND IN ACCORDANCE WITH THE TERMS OF ENGAGEMENT FOR THAT COMMISSION. REPRODUCTION OF THIS WHOLE OR PART OF THE DOCUMENT CONSTITUTES AN INFRINGEMENT OF COPYRIGHT. THE INFORMATION, IDEAS AND CONCEPTS CONTAINED IN THIS DOCUMENT ARE PROHIBITED FROM DISCLOSURE TO ANY PERSON WITHOUT THE PRIOR WRITTEN CONSENT OF THE COPYRIGHT HOLDER.



36 Mildura Street Fyshwick ACT 2609
Po Box 75 Red Hill ACT 2603
cialandscapesandcolour.com.au
+61 02 6232 6582 / +61 04 1728 9042

CLIENT



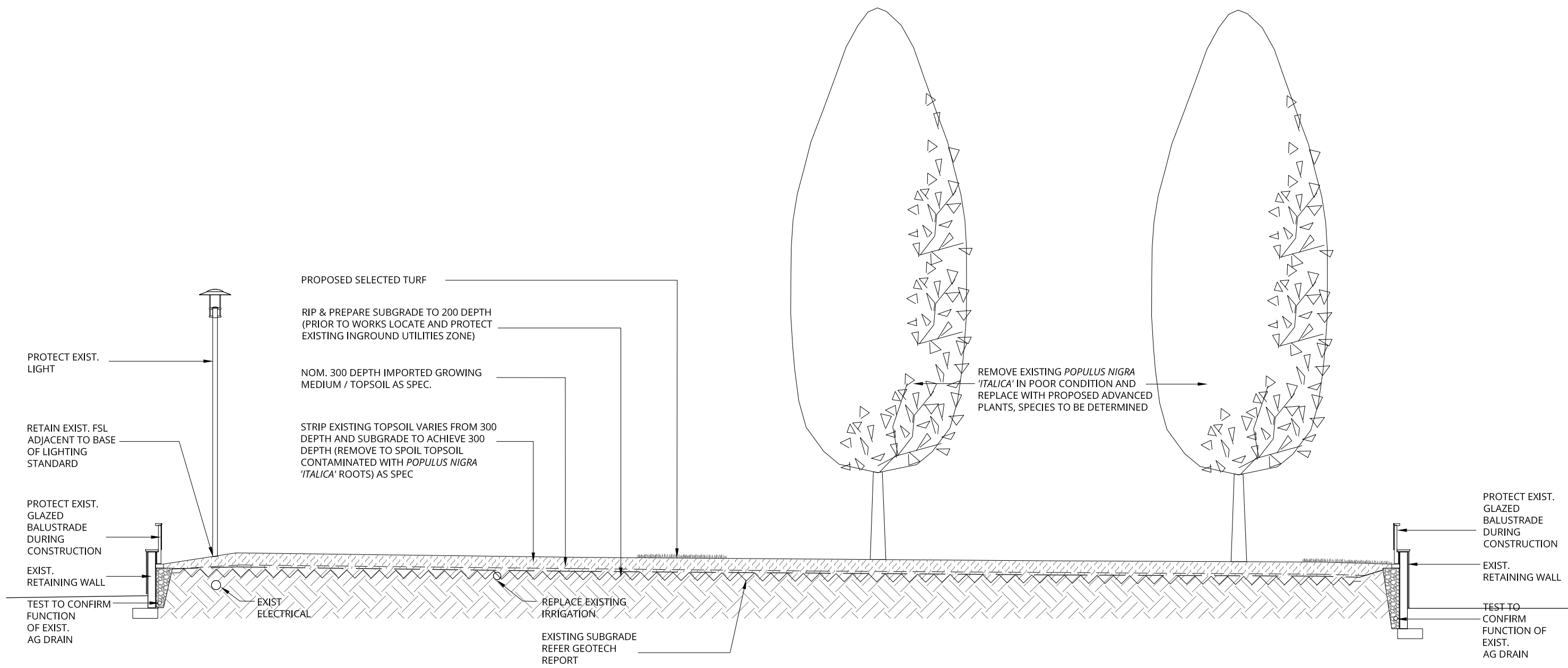
Australian Government
National Capital Authority

DRAWING TITLE
DRAWING USE

PROJECT
PROJECT NUMBER
DWG NO
REVISION

LANDSCAPE DETAILS
FSP

REMOVAL & REPLACEMENT OF LOMBARDY POPLARS
AT THE NATIONAL LIBRARY OF AUSTRALIA
18_004
L.802
B



TERRACE B - SECTION 4-4
SCALE 1:50

REVISION	DATE	AMENDMENT	DRAWN	CHECKED	APPROVED
A	24.07.2018	FINAL SKETCH PLAN	CB	RS	CF
B	14.11.2018	TENDER REVIEW	CB	RS	CF

SCALE A1

© COPYRIGHT
THIS DRAWING REMAINS THE PROPERTY OF CIA LANDSCAPES + COLOUR. IT MAY BE USED FOR THE PURPOSE FOR WHICH IT WAS COMMISSIONED AND IN ACCORDANCE WITH THE TERMS OF ENGAGEMENT FOR THAT COMMISSION. REPRODUCTION OF THIS WHOLE OR PART OF THIS DOCUMENT CONSTITUTES AN INFRINGEMENT OF COPYRIGHT. THE INFORMATION, IDEAS AND CONCEPTS CONTAINED IN THIS DOCUMENT ARE PROHIBITED FROM DISCLOSURE TO ANY PERSON WITHOUT THE PRIOR WRITTEN CONSENT OF THE COPYRIGHT HOLDER.



36 Mildura Street Fyshwick ACT 2609
Po Box 75 Red Hill ACT 2603

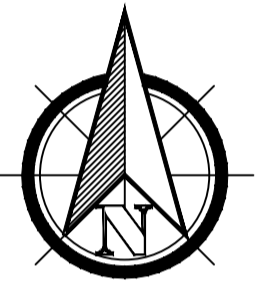
cialandscapesandcolour.com.au
+61 02 6232 6582 / +61 04 1728 9042



DRAWING TITLE	LANDSCAPE DETAILS
DRAWING USE	FSP
PROJECT	REMOVAL & REPLACEMENT OF LOMBARDY POPLARS AT THE NATIONAL LIBRARY OF AUSTRALIA
PROJECT NUMBER	18_004
DWG NO	L.803
REVISION	B

issue date amendments

B 19.07.2018 FOR REVISION -
C 24.08.2018 FOR REVISION -



client:

Cia
landscapes
+
colour

notes:

NATIONAL LIBRARY
OF AUSTRALIA

designed by:



1/59 Tennant Street, Fyshwick A.C.T. 2609
Ph: (02)62804300 Fax: (02)62806120
ABN 88067610477



project:

NATIONAL LIBRARY OF
AUSTRALIA FOR
CONSTRUCTION.DWG

scale: 1:200 @ A1 1:400 @ A3

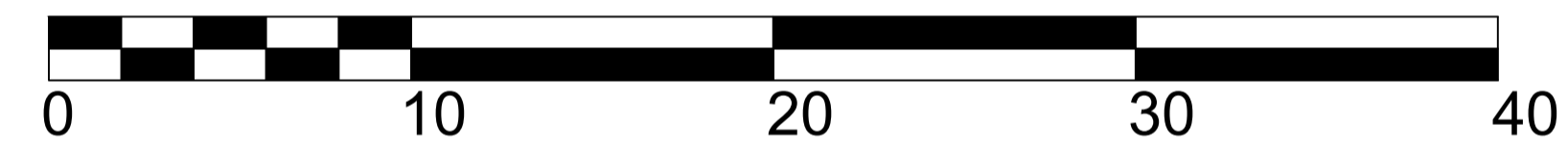
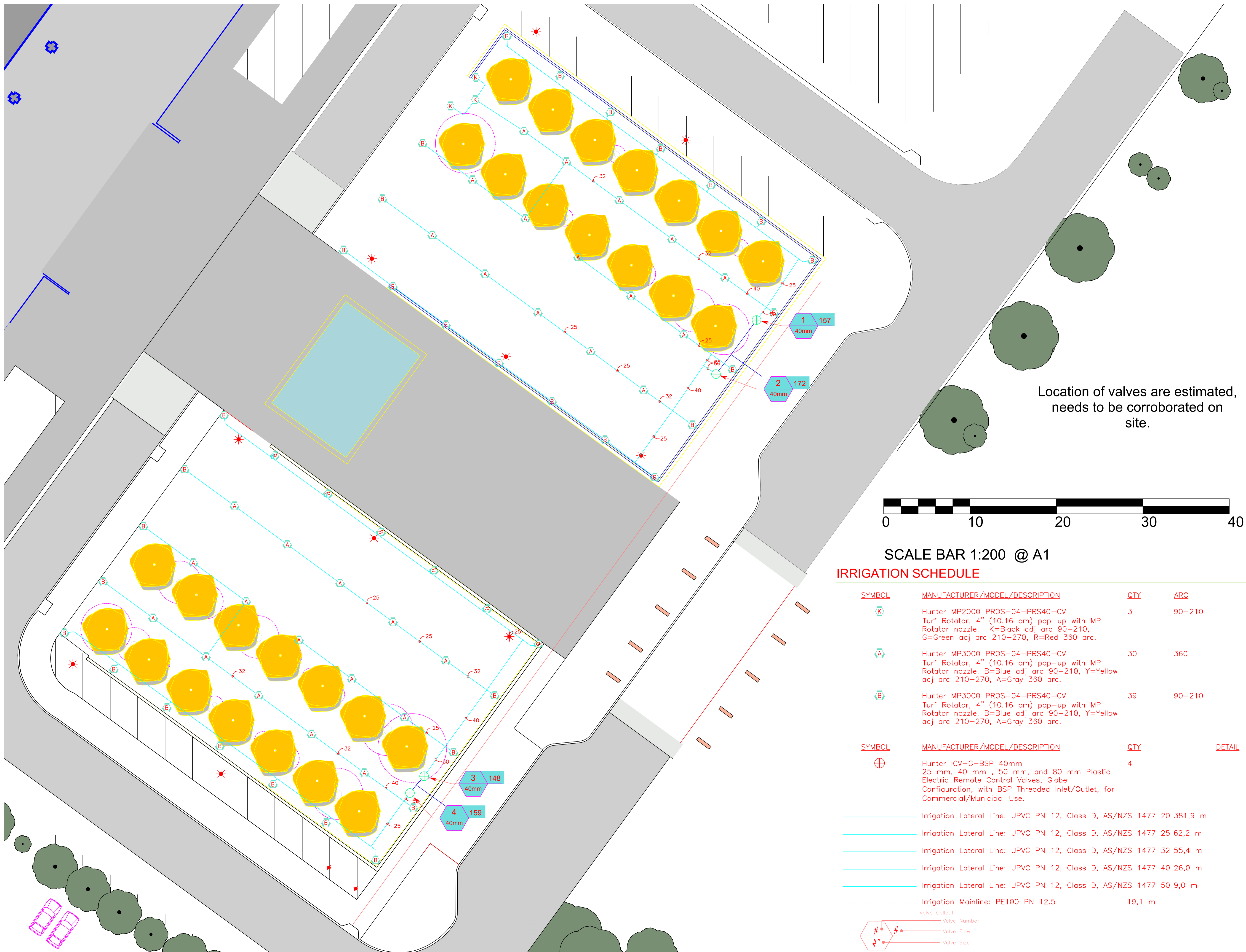
project no: Q1007

date: 24.08.2018 issue no: C

design by: Juan M. Caball

drawing no: 1417-2.FC

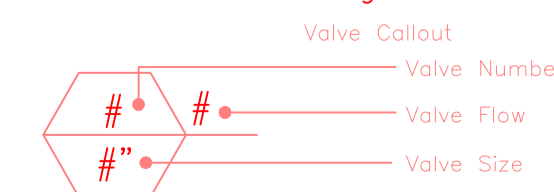
G:\PLANS\PROJECTS\1417_NATIONAL LIBRARY OF AUSTRALIA.DWG



SCALE BAR 1:200 @ A1

IRRIGATION SCHEDULE

SYMBOL	MANUFACTURER/MODEL/DESCRIPTION	QTY	ARC
	Hunter MP2000 PROS-04-PRS40-CV Turf Rotator, 4" (10.16 cm) pop-up with MP Rotator nozzle. K=Black adj arc 90-210, G=Green adj arc 210-270, R=Red 360 arc.	3	90-210
	Hunter MP3000 PROS-04-PRS40-CV Turf Rotator, 4" (10.16 cm) pop-up with MP Rotator nozzle. B=Blue adj arc 90-210, Y=Yellow adj arc 210-270, A=Gray 360 arc.	30	360
	Hunter MP3000 PROS-04-PRS40-CV Turf Rotator, 4" (10.16 cm) pop-up with MP Rotator nozzle. B=Blue adj arc 90-210, Y=Yellow adj arc 210-270, A=Gray 360 arc.	39	90-210
	Hunter ICV-G-BSP 40mm 25 mm, 40 mm, 50 mm, and 80 mm Plastic Electric Remote Control Valves, Globe Configuration, with BSP Threaded Inlet/Outlet, for Commercial/Municipal Use.	4	
	Irrigation Lateral Line: UPVC PN 12, Class D, AS/NZS 1477 20 381,9 m		
	Irrigation Lateral Line: UPVC PN 12, Class D, AS/NZS 1477 25 62,2 m		
	Irrigation Lateral Line: UPVC PN 12, Class D, AS/NZS 1477 32 55,4 m		
	Irrigation Lateral Line: UPVC PN 12, Class D, AS/NZS 1477 40 26,0 m		
	Irrigation Lateral Line: UPVC PN 12, Class D, AS/NZS 1477 50 9,0 m		
	Irrigation Mainline: PE100 PN 12.5	19,1 m	



CIA LANDSCAPES + COLOUR

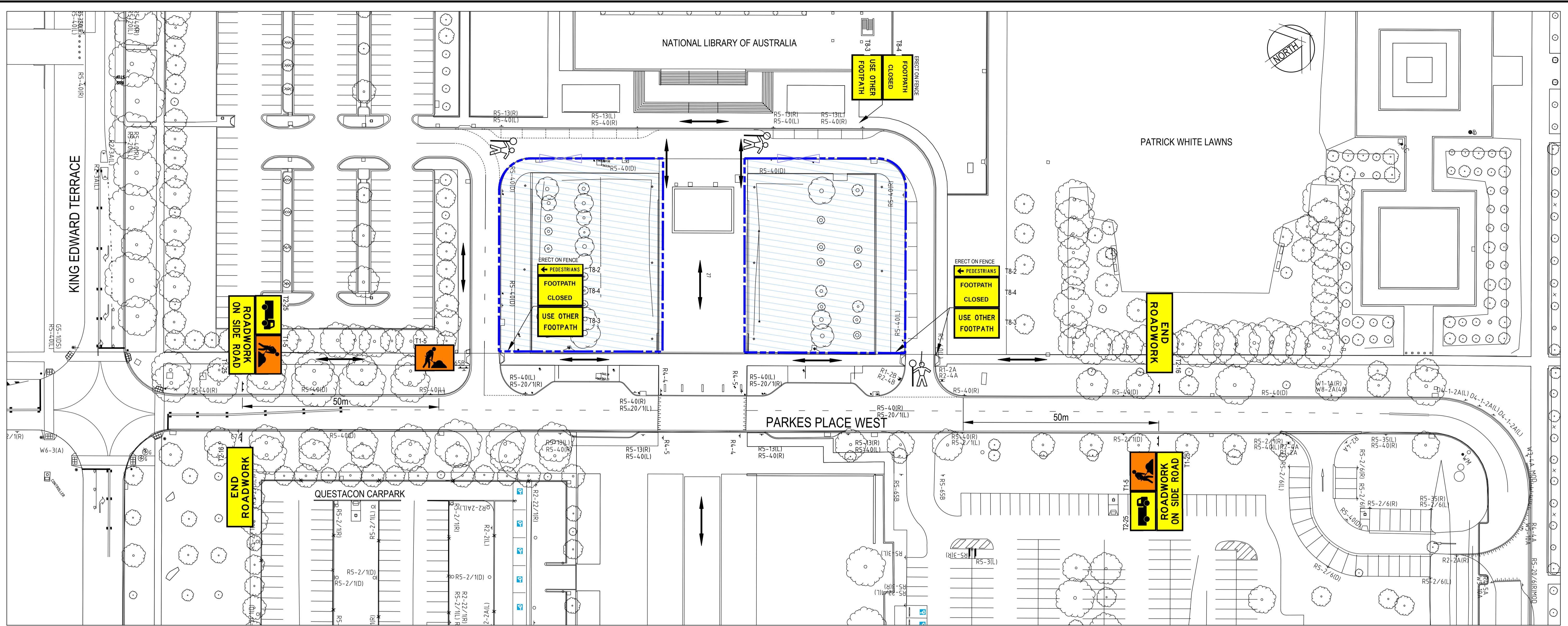
NATIONAL LIBRARY OF AUSTRALIA TREE REMOVAL

COVERSHEET, DRAWING LIST AND LOCALITY PLAN



LOCALITY PLAN
N.T.S

SCHEDULE OF DRAWINGS	
DRAWING No.	DESCRIPTION
50518097-C-1001	COVERSHEET, DRAWING LIST AND LOCALITY PLAN
50518097-C-1005	TEMPORARY TRAFFIC MANAGEMENT PLAN
50518097-C-1010	SEDIMENT AND EROSION CONTROL GENERAL NOTES AND LEGEND
50518097-C-1011	SEDIMENT AND EROSION CONTROL PLAN
50518097-C-1017	VEHICLE TURNING MOVEMENTS



CONTACT DETAILS:

CIA LANDSCAPE + COLOURS
 BRIAR CHAMPNESS LAL
 0417 289 042

HOURS OF OPERATION:

MONDAY TO FRIDAY 7.00am to 6.00pm
 SATURDAY 7.00am to 6.00pm

LEGEND:

- WORK ZONE
- PEDESTRIAN MOVEMENTS
- 1.8m HIGH SITE FENCE AND GATE

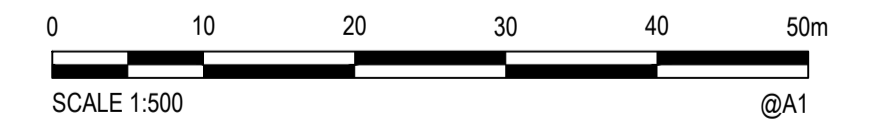
TRAFFIC CONTROLLER TO ENSURE SAFE PASSAGE THROUGH SITE FOR MINI-BUS

NOTES:

1. THE CONTRACTOR IS RESPONSIBLE FOR THE SITE OF WORKS AND THE TRAFFIC MANAGEMENT WITHIN THE SITE AND SHALL KEEP ALL REQUIRED RECORDS AND UNDERTAKE ALL NECESSARY MAINTENANCE.
2. ALL TEMPORARY TRAFFIC MANAGEMENT (TTM) DEVICES SHALL BE IN ACCORDANCE WITH AS 1743 AND QA G10 TRAFFIC MANAGEMENT (ACT MODIFIED).
3. ALL EMPLOYEES ARE TO WEAR APPROPRIATE SAFETY EQUIPMENT AS DETAILED IN THE RELEVANT AUSTRALIAN STANDARD AND QA G10 TRAFFIC MANAGEMENT (ACT MODIFIED).
4. ALL SIGNS CONFLICTING WITH THIS TTM PLAN SHALL BE COVERED OR REMOVED DURING THE HOURS OF OPERATION.
5. ALL SIGNS ERECTED IN RELATION TO THIS TTM THAT ARE NOT REQUIRED OUTSIDE THE HOURS OF OPERATION SHALL BE COVERED.
6. ALL EMPLOYEES INVOLVED IN TTM TRAFFIC CONTROL, SETUP, MINOR MODIFICATIONS AND INSPECTIONS SHALL HAVE THE RELEVANT QUALIFICATIONS IN ACCORDANCE WITH CLAUSE 1.5.3 OF QA G10 TRAFFIC MANAGEMENT (ACT MODIFIED).
7. ALL TRAFFIC CONTROL SIGNS AND DEVICES SHALL BE ERECTED AS PER THIS TTM AND IN CLEAR LINE OF SIGHT TO ALL ROAD USERS AND PEDESTRIANS. THEY SHALL NOT BE OBTUSCURED BY ANY VEGETATION, WORK PLANT OR PARKED VEHICLES. THEY SHALL NOT BE PLACED IN A MANNER THAT THEY WILL BECOME A HAZARD TO VEHICULAR TRAFFIC OR PEDESTRIANS.
8. ALL TRAFFIC LANES SHALL BE 3.0m MINIMUM.
9. ALL BOLLARDS SHALL BE PLACED AT 1.6m MINIMUM SPACING AND PLACED 1.2m FROM THE KERB LINE TO FORM THE WORK SAFETY ZONE.
10. THE CONTRACTOR SHALL LIAISE WITH ADJACENT PROJECT CONTRACTOR AND NOT PLACE ANY CONFLICTING TTM. THE CONTRACTOR SHALL NOTIFY THE SUPERINTENDENT OF ANY CONFLICTS.
11. CERTIFIED TRAFFIC CONTROL PERSONNEL SHALL BE USED AT ALL TIMES WHEN CONSTRUCTION TRAFFIC CROSS NEAR OR OVER ANY FOOTPATH AND WHEN ENTERING OR EXITING THE SITE.

SIGNS TO BE ERECTED				
SIGN NUMBER	DESCRIPTION	L	R	D N
T1-5	WORKMAN AHEAD	-	-	3
T1-25	ROADWORK ON SIDE ROAD	-	-	2
T2-16	END OF ROADWORK	-	-	2
T2-25	TRUCKS	-	-	2
T8-2	PEDESTRIANS	-	2	-
T8-3	USE OTHER FOOTPATH	-	-	3
T8-4	FOOTPATH CLOSED	-	-	3

SIGN SCHEDULE



Rev.	Date	Description	Des.	Verif.	Appd.
B	23/07/2018	PRELIMINARY SKETCH PLAN	PDJ	MN	JPS
A	20/07/2018	PRELIMINARY SKETCH PLAN	PDJ	MN	JPS



© Cardno Limited All Rights Reserved.
 This document is produced by Cardno Limited solely for the benefit of and use by the client in accordance with the terms of the retainer. Cardno Limited does not and shall not assume any responsibility or liability whatsoever to any third party arising out of any use or reliance by third party on the content of this document.

Cardno (NSW/ACT) Pty Ltd | ABN 95 001 145 035
 Level 2, 14 Wormald Street
 Symonston ACT 2609
 Tel: 02 6112 4500 Fax: 02 6112 4599
 Web: www.cardno.com.au

Drawn	Date	Client
PDJ	20/07/2018	CIA LANDSCAPES + COLOUR
Checked	Date	Project
MIN	20/07/2018	NATIONAL LIBRARY OF AUSTRALIA TREE REMOVAL
Designed	Date	Title
PDJ	20/07/2018	TEMPORARY TRAFFIC MANAGEMENT PLAN
Verified	Date	
GZ	20/07/2018	
Approved	Date	
JPS	20/07/2018	

Status	Scale	Size
PRELIMINARY	1:500	A1
Datum	Drawing Number	Revision
AHD	50518097-C-1005	B

NOT TO BE USED FOR CONSTRUCTION PURPOSES

DATE PLOTTED: 12 November 2018 4:45 PM BY: LEON RUECKER

GENERAL NOTES

- TOTAL SITE AREA = 5155 m²
- EXISTING AVERAGE SITE GRADE = 1.00%
- HOURS OF OPERATION = 7.00am TO 5.00pm, MONDAY TO FRIDAY. SATURDAY WORK TO BE APPROVED BY THE NATIONAL CAPITAL AUTHORITY (NCA)
- NOMINATED PROJECT MANAGER/SUPERINTENDANT'S REPRESENTATIVE/SITE FOREMAN = TBC
- ORIGIN OF IMPORTED SOIL:
VENM FILL
CANBERRA SAND AND GRAVEL
CANBERRA CONCRETE RECYCLERS
BORAL QUARRIES
ACT RECYCLING
- STORMWATER INLETS SHALL BE PREVENTED FROM ACCEPTING SEDIMENT THROUGH THE APPLICATION OF STRAW BALE DROP INLET SEDIMENT TRAPS.
- BLOCK HYDRAULICS SERVICE TRENCHES TO BE BACKFILLED, GRASSED AND MULCHED WITHIN THE TIME SPECIFIED IN THE LICENSE.
- THE CONTRACTOR SHALL PROGRAM WORKS SO THAT DISTURBED AREAS ARE PROGRESSIVELY RESTORED BY TEMPORARY GRASSING AND MULCHING ON AN AREA BY AREA BASIS DURING THE CONTRACT PERIOD.
- THE CONTRACTOR SHALL LIMIT MOVEMENT OF VEHICLES AND PLANT TO APPROVED PARKING AREAS AND ACCESS ROUTES OR TO AREAS WHERE EXCAVATION OR FILL IS REQUIRED BY THE DRAWINGS. FINAL TRIMMING AT THE END OF CONTRACT IS PROHIBITED.
- PLACE STRAW BALES OR SANDBAGS AROUND DRAINAGE SUMPS AT LOW POINTS AND OTHER KEY DRAINAGE LOCATIONS AS REQUIRED.
- THESE DRAWINGS TYPIFY ONLY EROSION CONTROL PRINCIPLES REQUIRED. IT IS THE RESPONSIBILITY OF THE CONTRACTOR TO DESIGN AND SUBMIT DETAILS OF PROPOSED EROSION CONTROL MEASURES IN ACCORDANCE WITH SECTION 2.03 OF THE BASIC SPECIFICATION. IT CAN BE ANTICIPATED THAT ALL NECESSARY CONTROL MEASURES INCLUDED IN 2.03.1 WILL BE REQUIRED.
- MEASURES REQUIRED FOR CONFIRMING WITH THE A.C.T. WATER POLLUTION ACT ARE SET OUT IN THE ACT STANDARD SPECIFICATION CLAUSE 2.03.
- POLLUTION CONTROL METHODS SHALL ALSO BE DESIGNED IN ACCORDANCE WITH THE "ENVIRONMENTAL PROTECTION GUIDELINES FOR CONSTRUCTION AND LAND DEVELOPMENT IN THE ACT", 2011.
- INSTALL SILT FENCES AROUND ALL SUMPS AND MH'S AND MAINTAIN DURING ENTIRE CONSTRUCTION PERIOD UNTIL THE SITE IS FULLY GRASSED AND STABILISED.
- SEDIMENT PONDS ARE TO BE LEFT IN PLACE UNTIL THE SITE IS FULLY GRASSED AND STABILISED.
- ALL SUB SOIL DRAINS ARE TO BE CONNECTED TO DIVERSION DRAINS AND DISCHARGE INTO SEDIMENT PONDS.
- ALL AREAS OF SITE BEYOND EARTHWORKS AND DRAINAGE WORK LIMITS DISTURBED BY CONSTRUCTION ACTIVITIES SHALL BE REINSTATED IMMEDIATELY AT CONTRACTOR'S EXPENSE.
- PERMANENT STABILISATION OF SITE IS TO BE ESTABLISHED BEFORE COMPLETION CAN BE AUTHORISED.
- ALL STRAW BALES TO BE WRAPPED IN GEOTEXTILE FABRIC.

EROSION CONTROL NOTES

- THE MEASURES SHOWN ON THE DRAWING ARE CONCEPTUAL DESIGN GUIDELINES BASED ON "ENVIRONMENTAL PROTECTION GUIDELINES FOR CONSTRUCTION AND LAND DEVELOPMENT IN THE ACT", 2011. ALL EROSION AND SEDIMENT MEASURES SHALL BE REMOVED AT THE COMPLETION OF THE PROJECT ONLY, AND IT IS THE RESPONSIBILITY OF THE CONTRACTOR TO DESIGN, INSTALL AND MAINTAIN MEASURES IN ACCORDANCE WITH ENVIRONMENTAL PROTECTION AUTHORITY.
- THE CONTRACTOR SHALL PROVIDE DRAWING AND DETAILS TO THE ENVIRONMENT PROTECTION UNIT 'ENVIRONMENT A.C.T.' FOR APPROVAL PRIOR TO COMMENCING WORKS.
- THE CONTRACTOR SHALL ENSURE THAT ADEQUATE MEASURES FOR THE SUPPRESSION OF DUST AND NOISE ARE TAKEN AT ALL TIMES DURING CONSTRUCTION WORK. KEEP ROAD PAVEMENTS, CYCLEPATHS AND FOOTPATHS CLEAR OF DIRT, MUD AND OTHER DEBRIS AT ALL TIMES.
- FOLLOWING CONSTRUCTION, PROVIDE FILTER ROLLS TO ALL NEW SUMPS UNTIL THE CATCHMENT AREAS ARE ESTABLISHED. PROVIDE FILTER ROLLS TO ALL EXISTING SUMPS AROUND THE CONSTRUCTION SITE.
- SILT FENCE SHALL BE PLACED AROUND ANY STOCKPILES.
- SILT FENCE SHALL BE ADJUSTED AROUND STOCKPILES OR SPOIL AREAS IF REQUIRED.
- PLACE SANDBAGS AROUND DRAINAGE SUMPS AT LOW POINTS AND OTHER KEY DRAINAGE LOCATIONS AS REQUIRED.
- INSTALL SILT FENCES AROUND ALL SUMPS AND MANHOLES AND MAINTAIN DURING ENTIRE CONSTRUCTION PERIOD UNTIL THE SITE IS FULLY GRASSED AND STABILISED.
- SEDIMENT PONDS ARE TO BE LEFT IN PLACE UNTIL THE SITE IS FULLY GRASSED AND STABILISED.
- THE SEDIMENT RETENTION POND SHALL BE MONITORED AND MAINTAINED ON A DAILY BASIS THROUGHOUT THE CONSTRUCTION PERIOD.
- WATER SHALL BE CHEMICALLY DOSED WITH GYPSUM TO ACCELERATE THE SETTLEMENT OF SUSPENDED SOILS AND DISCHARGED WHEN IT IS ABOVE 20% OF THE PONDS FULL CAPACITY, AT A RATE OF 320MG PER CUBIC METER.

SITE COMPOUND NOTES

- DIMENSIONS SHOWN ARE MINIMUM ONLY. THE CONTRACTOR SHALL CONSTRUCT THE FACILITY TO A SIZE THAT WILL PERFORM IN A MANNER WHICH SATISFIES THE REQUIREMENTS OF THE CONTRACT.
- STABILISED CONSTRUCTION ENTRANCE/EXIT STONE - CRUSHED STONE 50mm TO 75mm NOMINAL SIZE ON HIGH STRENGTH GEOTEXTILE FABRIC.
- WASHING DOWN OF WHEELS AND BODY SURFACES OF ALL VEHICLES AND PLANT LEAVING THE SITE TO PREVENT THE CARRIAGE OF SEDIMENT ONTO STREETS IS REQUIRED.
- THE ENTRANCE SHALL BE MAINTAINED IN A CONDITION WHICH WILL PREVENT TRACKING OR FLOWING OF SEDIMENT ONTO ADJACENT ROADS AND STREETS. THIS MAY REQUIRE PERIODIC TOP DRESSING OF THE ENTRANCE WITH ADDITIONAL STONE AS CONDITIONS DEMAND AND REPAIR AND/OR CLEARANCE OF ANY MEASURES USED TO TRAP SEDIMENT. ALL SEDIMENT SPILLED, DROPPED, WASHED OR TRACKED ONTO ROADS MUST BE REMOVED IMMEDIATELY BY THE CONTRACTOR.
- DIVERT RUNOFF AWAY FROM ACCESS POINT.

SEDIMENT RETENTION POND

- THE SEDIMENT RETENTION POND SHALL BE FULLY MAINTAINED UNTIL THE DISTURBED CATCHMENT AREA IS PROTECTED AGAINST EROSION BY PERMANENT STABILISATION.
- PROTECTION SHALL BE PROVIDED FOR THE FINAL LANDSCAPE WORKS UTILISING SILT CONTROL FENCING.
- THE SEDIMENT RETENTION POND SHALL BE CLEANED OUT WHEN THE VOLUME REMAINING IS REDUCED BY SEDIMENTATION TO 90%
- THE EMBANKMENT SHALL BE STABILISED WITH HESSIAN TEMPORARILY.
- DISCHARGE FROM THE POND IS PERMITTED WHEN THE WATER HAS CLARIFIED TO BELOW 60MG/L (USUALLY WITHIN 24-36 HOURS).
- ENVIRONMENT ACT AND THE NCA TO BE ADVISED OF PROPOSED POND DISCHARGE PRIOR TO DISCHARGE.

DUST MANAGEMENT NOTES

WHERE BUILDING WORK GENERATES DUST, ALL REASONABLE AND PRACTICABLE MEASURES SHOULD BE TAKEN TO MINIMISE THAT DUST. THIS CAN OFTEN BE ACHIEVED BY:

- RETAIN EXISTING VEGETATION WHERE POSSIBLE;
- STRIPPING AREAS PROGRESSIVELY AND ONLY WHERE IT IS NECESSARY FOR WORKS TO OCCUR;
- EMPLOYING STABILISING METHODS SUCH AS MATTING, GRASSING OR MULCH;
- DAMPENING THE GROUND WITH A LIGHT WATER SPRAY (CONTACT ENVIRONMENT ACT FOR REQUIREMENTS DURING EXTREME DROUGHT CONDITIONS);
- ROUGHENING SURFACE OF EXPOSED SOIL;
- COVERING STOCKPILES AND LOCATING THEM WHERE THEY ARE PROTECTED FROM THE WIND;
- RESTRICTING VEHICLE MOVEMENTS;
- COVERING THE LOAD WHEN TRANSPORTING MATERIAL;
- CONSTRUCTING WIND BREAKS SUCH AS WIND FENCES IN ACCORDANCE WITH THE BLUE BOOK;
- A WATER CART OR SUFFICIENT WATER SPRAYS SHALL BE MADE AVAILABLE AT ALL TIMES IN ADVERSE CONDITIONS WHEN DUST CANNOT BE ADEQUATELY CONTROLLED WHEN WORKS AREA BEING UNDERTAKEN, WORKS WILL CEASE IN THESE AREAS UNTIL CONDITIONS IMPROVE;
- WATER SHALL BE APPLIED TO SUPPRESS DUST FROM OPEN EARTHWORKS AS WELL AS UNPROTECTED STOCKPILES;
- AREAS OF COMPLETED EARTHWORKS SHALL BE PROGRESSIVELY REHABILITATED WITH DRYLAND GRASS AND FENCED OFF AS SOON AS PRACTICABLE TO PREVENT FURTHER EROSION;
- THE CONTRACTOR IS TO CONTACT THE WATER RESOURCES UNIT TO OBTAIN AN EXEMPTION TO USE NON-POTABLE WATER FROM ON OR OFF THE SITE IF REQUIRED;

NOISE

ENSURE ALL BUILDING WORK THAT GENERATES NOISE IS CONDUCTED WITHIN THE TIME PERIODS DETAILED IN SCHEDULE 2 OF THE ENVIRONMENTAL PROTECTION REGULATIONS 2005.

MONDAY TO SATURDAY	SUNDAY AND PUBLIC HOLIDAYS
6AM TO 8PM	6AM TO 8PM

IN ADDITION:

- SCHEDULE NOISY ACTIVITIES FOR THE LEAST SENSITIVE TIMES OF THE DAY SUCH AS MID-MORNING AND MID AFTERNOON.
- SELECT MACHINERY THAT PRODUCE LESS NOISE; AND
- ENSURE MACHINERY IS WELL MAINTAINED.

DISPOSAL OF SPOIL

BEFORE DISPOSAL OF SPOIL OFFSITE, THE FOLLOWING INFORMATION MUST BE PROVIDED TO THE NCA AND ENVIRONMENT ACT:

- WHERE THE SPOIL WILL ORIGINATE FROM;
- WHO IS DISPOSING OF THE SPOIL;
- WHERE THE SPOIL WILL BE TAKEN;
- THE AMOUNT OF SPOIL TO BE TAKEN AWAY;
- DESCRIPTION OF THE TYPE OF SPOIL TAKEN AWAY;
- DETAILS OF HOW RECORDS WILL BE KEPT; AND
- TIMEFRAME TO COMPLETE WORKS TO THE SATISFACTION OF THE NCA AND ENVIRONMENT ACT.

SPOIL MAY BE TAKEN TO AN APPROVED LANDFILL SITE WITHOUT APPROVAL. HOWEVER, IF THE SPOIL IS TAKEN TO AN AREA OTHER THAN APPROVED LANDFILL SITE, ENSURE THE ACCEPTOR OF THE SPOIL IS AWARE OF THE REQUIREMENTS SET OUT IN SECTION 8.2 OF THE ENVIRONMENT PROTECTION GUIDELINES FOR CONSTRUCTION AND LAND DEVELOPMENT IN THE ACT.

FIRE

BURNING OF WASTE MATERIALS ON THE SITE, SUCH AS PLASTICS, CHEMICALS OR WOOD THAT MAY BE PAINTED, CHEMICALLY TREATED OR CONTAMINATED WITH CHEMICALS IS ILLEGAL. A FIRE IS NOT PERMITTED UNDER ANY CIRCUMSTANCES

MAINTENANCE SCHEDULE

MONTHLY:

- TURN OVER STABILISED CONSTRUCTION ENTRY MATERIAL AND REVIEW WHEN REQUIRED.

WEEKLY:

- CHECK AND REINSTATE SILT CONTROL FENCES

DAILY:

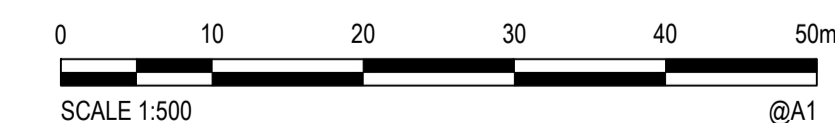
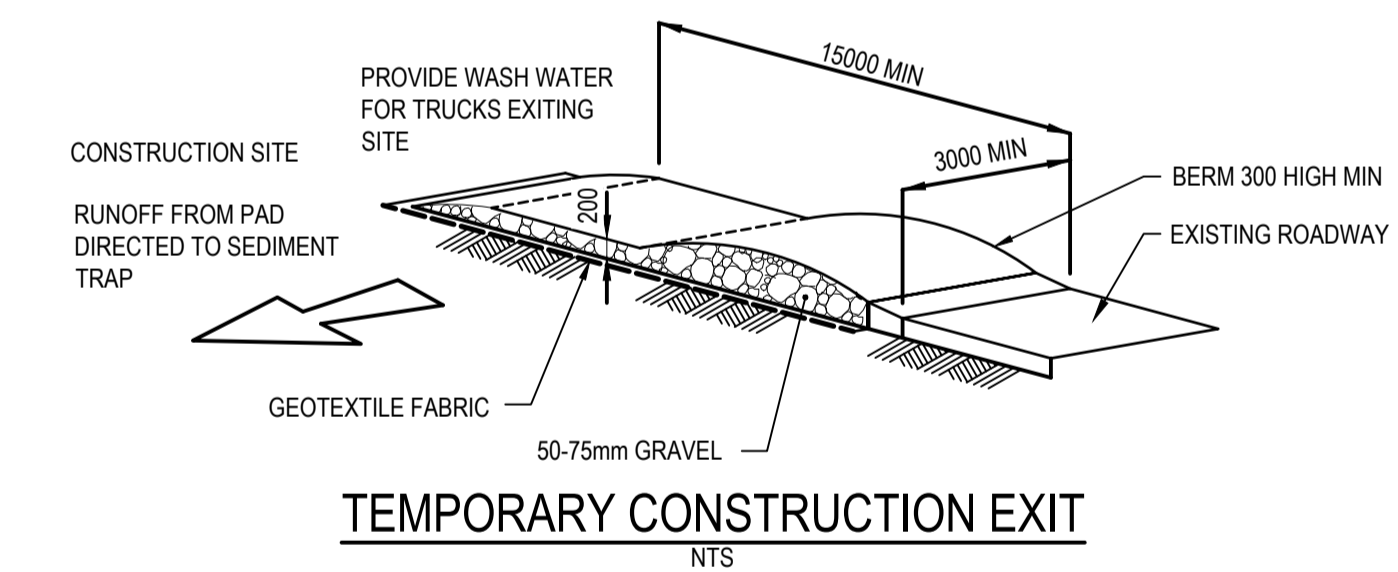
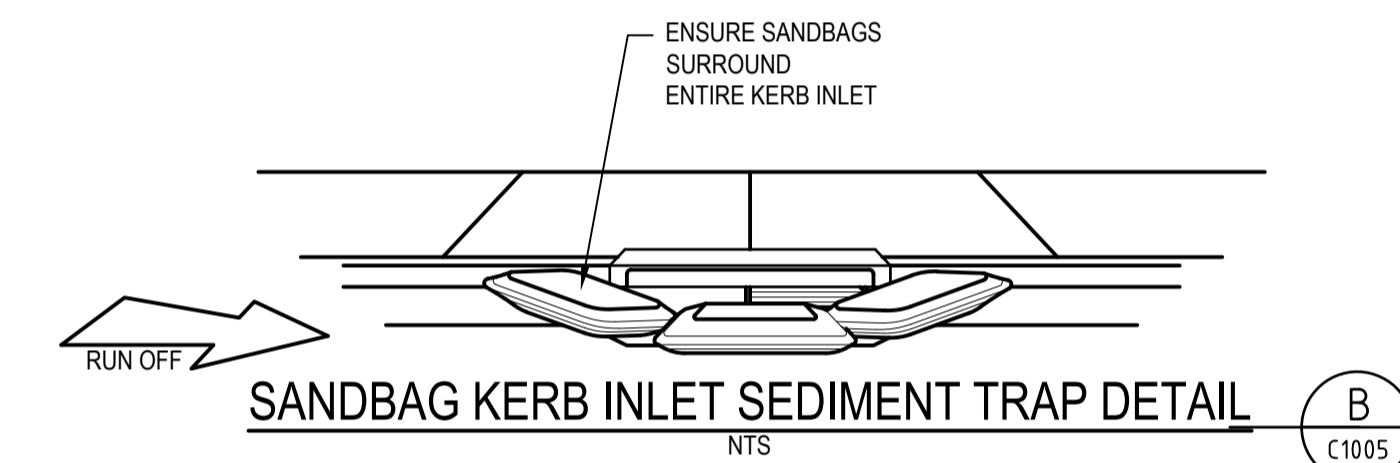
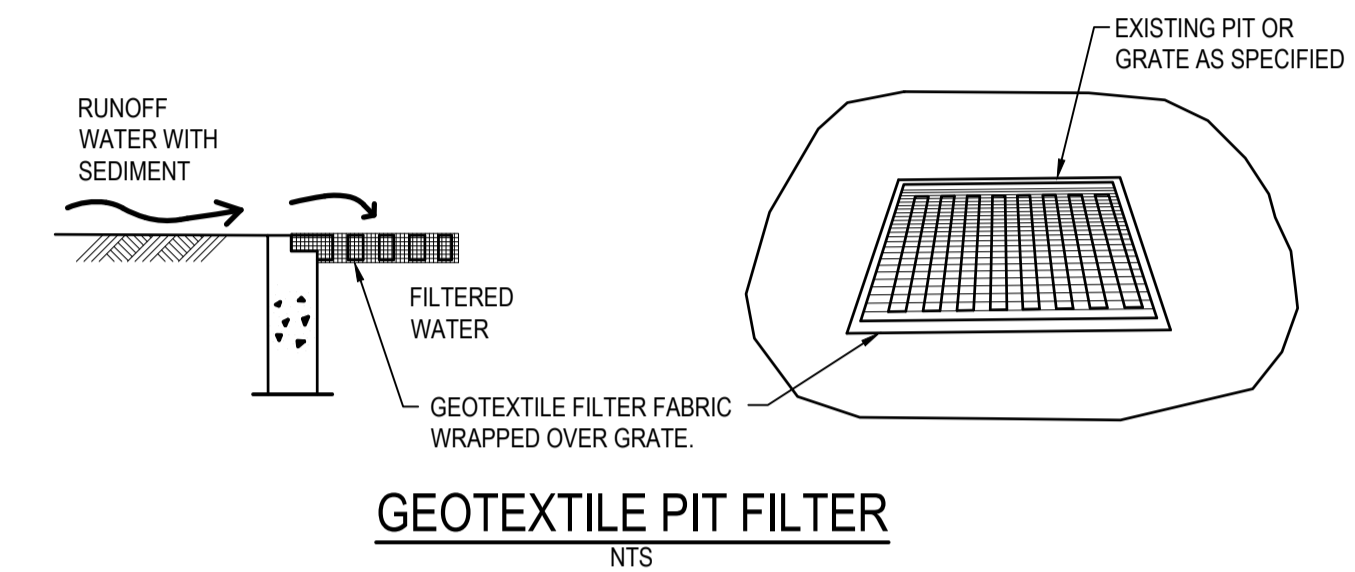
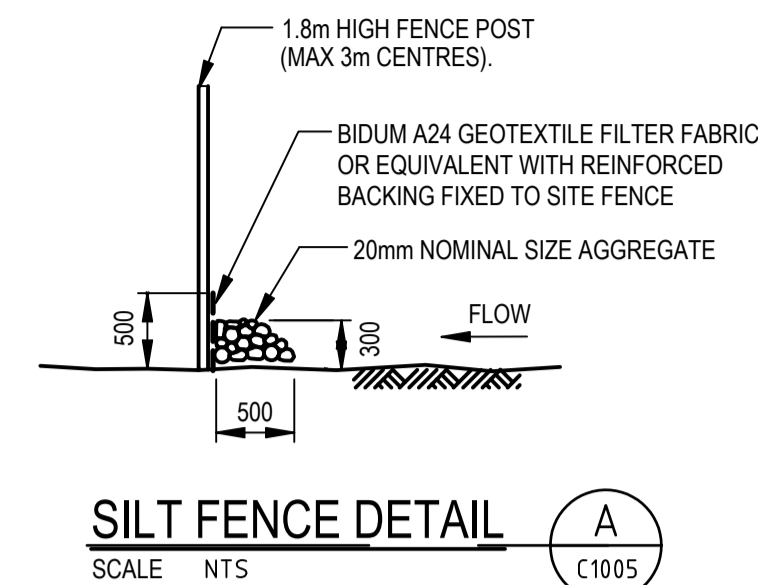
- SWEEP AND REMOVE DIRT AND ANY OTHER BUILDING MATERIAL FROM GUTTERS, FOOTPATHS OR ROADWAYS ADJACENT TO THE SITE BY CLOSE OF BUSINESS AND OR PRIOR TO RAIN AND WHEN REQUIRED. ALL NECESSARY STEPS SHOULD BE TAKEN THAT ARE PRACTICAL AND REASONABLE TO MINIMISE DUST POLLUTION ON LAND DEVELOPMENT AND CONSTRUCTION SITE.

DURING/AFTER WET WEATHER:

- LIMIT CONSTRUCTION VEHICLE ACCESS TO SITE DURING AND IMMEDIATELY FOLLOWING WET WEATHER.

SEDIMENT CONTROL NOTES

- PROVIDE KERBSIDE FILTER ROLL TO EXISTING SUMPS WHERE INDICATED, REFER TO GIVEN DETAIL.
- KERBSIDE FILTER ROLLS TO BE REMOVED, CLEANED AND REINSTATED ON A WEEKLY BASIS AT A MINIMUM. TRAPPED SEDIMENT ABOUT SUMPS ALSO TO BE REMOVED. CLEANING IS ALSO TO TAKE PLACE IMMEDIATELY AFTER PERIODS OF RAINFALL DURING CONSTRUCTION.
- THE SITE FOREMAN IS TO CONTACT THE NCA TO ARRANGE A SITE INSPECTION AND ENDORSEMENT OF SEDIMENT AND EROSION CONTROL MEASURES PRIOR TO WORKS COMMENCING.
- THE SITE FOREMAN IS TO CONTACT THE NCA TO DISCUSS ANY PROPOSED MAJOR CHANGES TO SEDIMENT AND EROSION CONTROLS ON SITE PRIOR TO IMPLEMENTING THE CHANGES.
- THE SITE FOREMAN WILL ENSURE CONTRACTORS ACCESS AND EXIT THE SITE USING ONLY ENVIRONMENT ACT APPROVED STABILISING ACCESS/EXIT POINTS AS DETAILED ON ENDORSED SEDIMENT AND EROSION CONTROL PLANS.



Rev.	Date	Description	Des.	Verif.	Appd.
A	20/07/2018	PRELIMINARY SKETCH PLAN		PDJ	MN JPS

**Cia
landscapes
+
colour**

© Cardno Limited All Rights Reserved.
This document is produced by Cardno Limited solely for the benefit of and use by the client in accordance with the terms of the retainer. Cardno Limited does not and shall not assume any responsibility or liability whatsoever to any third party arising out of any use or reliance by third party on the content of this document.

Cardno
Shaping the Future

Cardno (NSW/ACT) Pty Ltd | ABN 95 001 145 035
Level 2, 14 Wormald Street
Symonston ACT 2609
Tel: 02 6112 4500 Fax: 02 6112 4599
Web: www.cardno.com.au

Drawn	PDJ	Date	20/07/2018
Checked	MN	Date	20/07/2018
Designed	PDJ	Date	20/07/2018
Verified	GZ	Date	20/07/2018
Approved	JPS	Date	20/07/2018

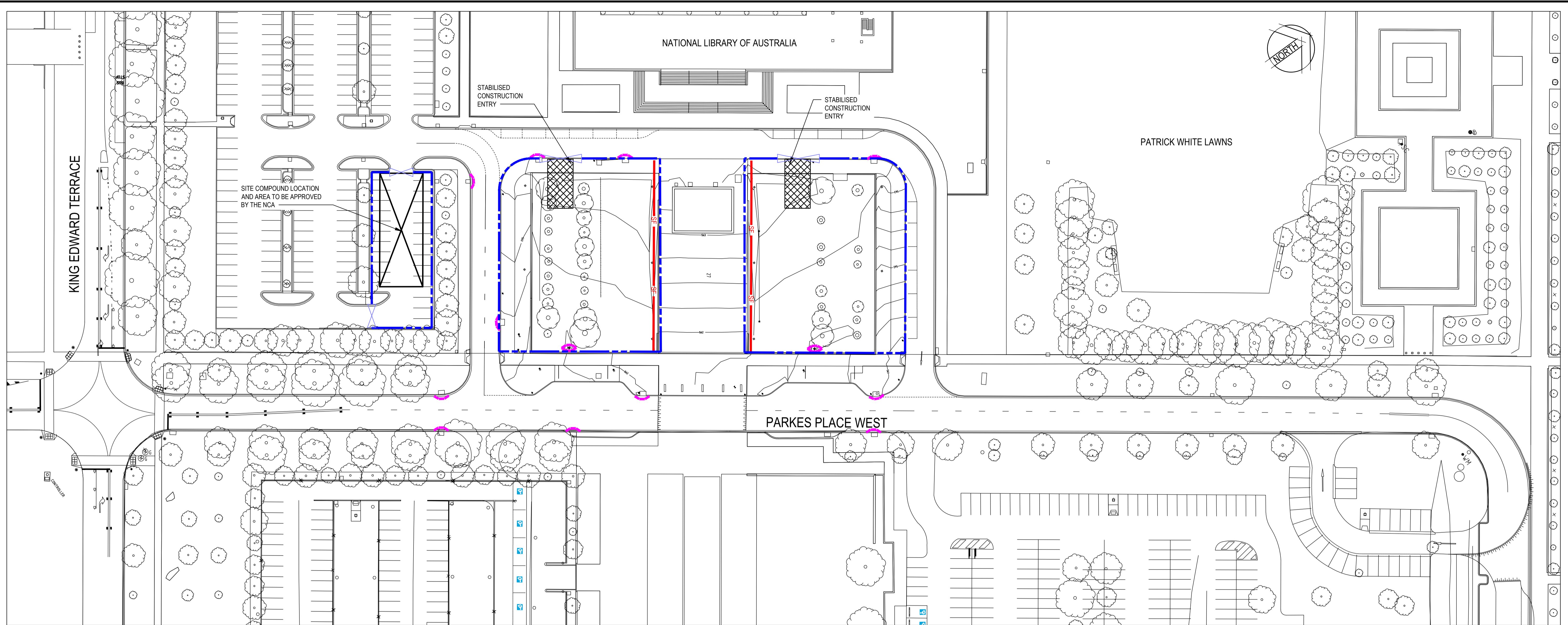
Client **CIA LANDSCAPES + COLOUR**

Project **NATIONAL LIBRARY OF AUSTRALIA
TREE REMOVAL**




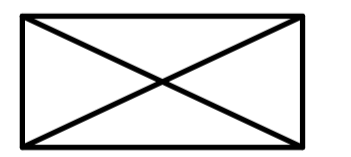
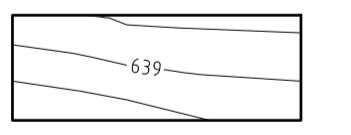
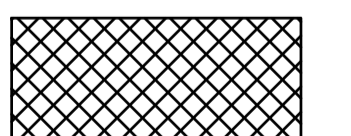
Title **SEDIMENT AND EROSION CONTROL
GENERAL NOTES AND LEGEND**

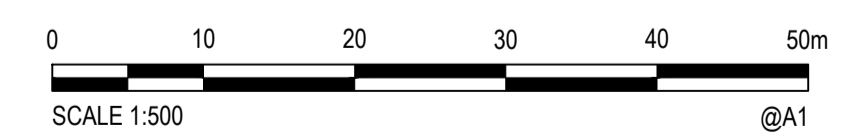
Status	PRELIMINARY		
NOT TO BE USED FOR CONSTRUCTION PURPOSES			
Datum	AHD	Scale	NONE
Size			A1
Drawing Number	50518097-C-1010		Revision
			A

XREFs: X SURVEY: X-T00-264-XD; X-CGD-CANBERRACENTRAL
CAD File: N:\Projects\50518097_C-1010\T11 FOR TREE REMOVAL PROJECT Drawings\B_50518097_C-1010.dwg



LEGEND

-  1.8m HIGH SITE FENCE AND GATE
-  SILT FENCE - REFER DETAILS DRG 50518097-C-1010
-  SEDIMENT TRAP AROUND ALL PITS
-  SITE COMPOUND
-  EXISTING CONTOURS
-  STABILISED CONSTRUCTION ENTRANCE/EXIT



Rev.	Date	Description	Des.	Verf.	Appd.
D	12/11/2018	SITE FENCE AND COMPOUND REVISED	LMR	MN	JPS
C	23/07/2018	PRELIMINARY SKETCH PLAN	PDJ	MN	JPS
B	23/07/2018	PRELIMINARY SKETCH PLAN	PDJ	MN	JPS
A	20/07/2018	PRELIMINARY SKETCH PLAN	PDJ	MN	JPS



© Cardno Limited All Rights Reserved.
This document is produced by Cardno Limited solely for the benefit of and use by the client in accordance with the terms of the retainer. Cardno Limited does not and shall not assume any responsibility or liability whatsoever to any third party arising out of any use or reliance by third party on the content of this document.

Cardno
Shaping the Future

Cardno (NSW/ACT) Pty Ltd | ABN 95 001 145 035
Level 2, 14 Wormald Street
Symonston ACT 2609
Tel: 02 6112 4500 Fax: 02 6112 4599
Web: www.cardno.com.au

Drawn	Date	Client
PDJ	20/07/2018	CIA LANDSCAPES + COLOUR
Checked	Date	Project
MN	20/07/2018	NATIONAL LIBRARY OF AUSTRALIA
Designed	Date	Title
PDJ	20/07/2018	SEDIMENT AND EROSION CONTROL PLAN
Verified	Date	
GZ	20/07/2018	
Approved	Date	
JPS	20/07/2018	

Status	Scale	Size
PRELIMINARY	1:500	A1
Drawing Number	Revision	
50518097-C-1011	D	

NOT TO BE USED FOR CONSTRUCTION PURPOSES		
Datum	Scale	Size
AHD	1:500	A1
Drawing Number	Revision	
50518097-C-1011	D	

