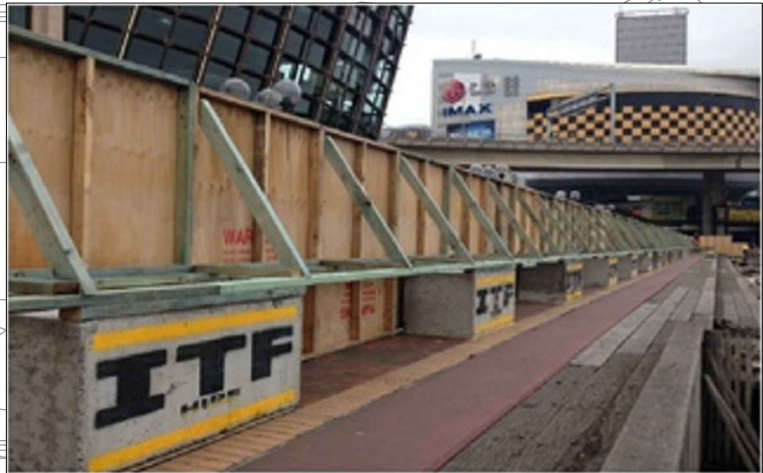








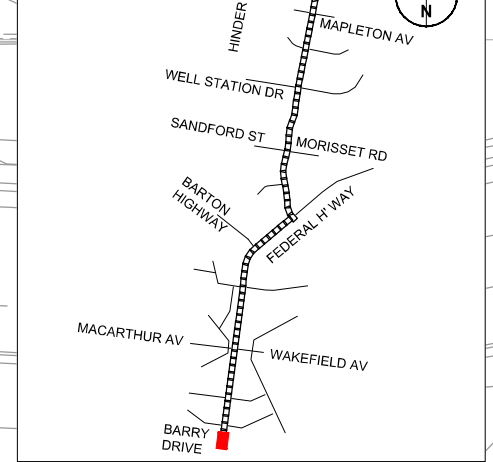
NORTHBOURNE AVENUE



### LEGEND

-  COMPOUND HOARDING
-  COMPOUND AREA
-  EARTHWORKS & DEMOLITION
-  2 x 3m GATES
-  1 x 1.2m GATE
-  TREE TO BE REMOVED

### KEYPLAN



PEDESTRIAN ACCESS FROM FOOTPATH BESIDE LUNCH AND CHANGING FACILITY (1 x 1.2m GATE).

REMOVE EXISTING KERBS (TYPICAL).

