

CONTINUATION AND ALIGNMENT OF STREET TREES

ELECTRICAL POE #1 AND POE #2 & PROPOSED EASEMENT

GAS METERS

PEDESTRIAN EGRESS

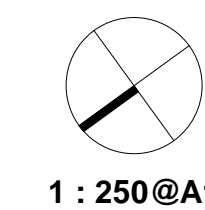
UNLEASED TERRITORY LAND WORKS NOT INCLUDED AS PART OF THIS APPLICATION, SUBJECT TO APPROVAL THROUGH ACT GOVERNMENT

UNLEASED TERRITORY LAND WORKS NOT INCLUDED AS PART OF THIS APPLICATION, SUBJECT TO APPROVAL THROUGH ACT GOVERNMENT

OUTLINE OF PREVIOUS PROPOSAL



Schedule of Revisions - Getting Cres	
Rev. 1	Getting St units altered
Rev. 2	Changes to ground and basement carparking



GENERAL NOTES:

TO BE READ IN CONJUNCTION WITH LANDSCAPE DRAWINGS

TENANCY LAYOUT, RETAIL CONFIGURATION AND ACCESS OFF STREET TENANCIES TO BE CONFIRMED WITH SUBSEQUENT INDIVIDUAL DEVELOPMENT APPLICATIONS

ALL LIFTS TO BE AS 1735.12 COMPLIANT
ALL ASSESSIBLE CARSPACES TO COMPLY WITH AS 2890.6-2009

ALL BASEMENT AREAS TO COMPLY WITH RELEVANT SECTIONS OF THE BCA & AUST. STANDARDS.

ALL UNITS HAVE ACCESS TO A WASTE ROOM LOCATED AT GROUND. COMMERCIAL AND RETAIL TENANTS HAVE ACCESS TO GROUND FLOOR WASTE ROOM. REFER WASTE MANAGEMENT PLAN.

STORAGE UNITS SUPPLIED FOR ALL RESIDENTIAL UNITS. BICYCLE STORAGE FOR RESIDENTIAL UNITS ACCOMMODATED WITHIN ASSOCIATED STORAGE.

BICYCLE RACKS FOR VISITORS SUPPLIED AT GROUND LEVEL AS INDICATED IN LANDSCAPE PLANS

ALL VISITOR PARKINGS IN ACCORDANCE WITH PRECINCT PARKING SUPPLY

ACCESSIBLE NOTES:

REFER TO ACCESS REPORT SUBMITTED AS PART OF THIS WORKS APPROVAL

ALL HANDRAILS AND GRABRAILS TO MEET AS1428.1 ACCESSIBLE SANITARY FACILITIES TO MEET AS1428.1 TACTILE GROUND SURFACE INDICATORS TO BE INSTALLED ON THE ACCESSIBLE PATH OF TRAVEL IN ACCORDANCE WITH AS1428.4

ALL EXTERNAL PAVING AND GROUND SURFACES TO THE ACCESSIBLE PATH OF TRAVEL TO MEET AS4586 FOR SLIP RESISTANCE ALL STAIRWELLS TO COMPLY WITH THE BUILDING CODE OF AUSTRALIA. INCLUDING TACTILE INDICATORS TO END OF FLIGHTS OF STAIRS AND CONTRASTING SLIP RESISTANT NOSING STRIPS.

LIGHTING ALONG THE ACCESSIBLE PATH OF TRAVEL TO BE INSTALLED IN ACCORDANCE WITH AS1428.1, AS1680, AS1158.3.

SIGNAGE TO MEET AS1428.1 TO IDENTIFY THE ACCESSIBLE PATH OF TRAVEL, INCLUDING BRAILLE AND TACTILE SIGNAGE. REFER SIGNAGE PLAN

REFER TO CARPARKING PLANS FOR ACCESSIBLE CARPARKING SPACES.

CORE LEGEND

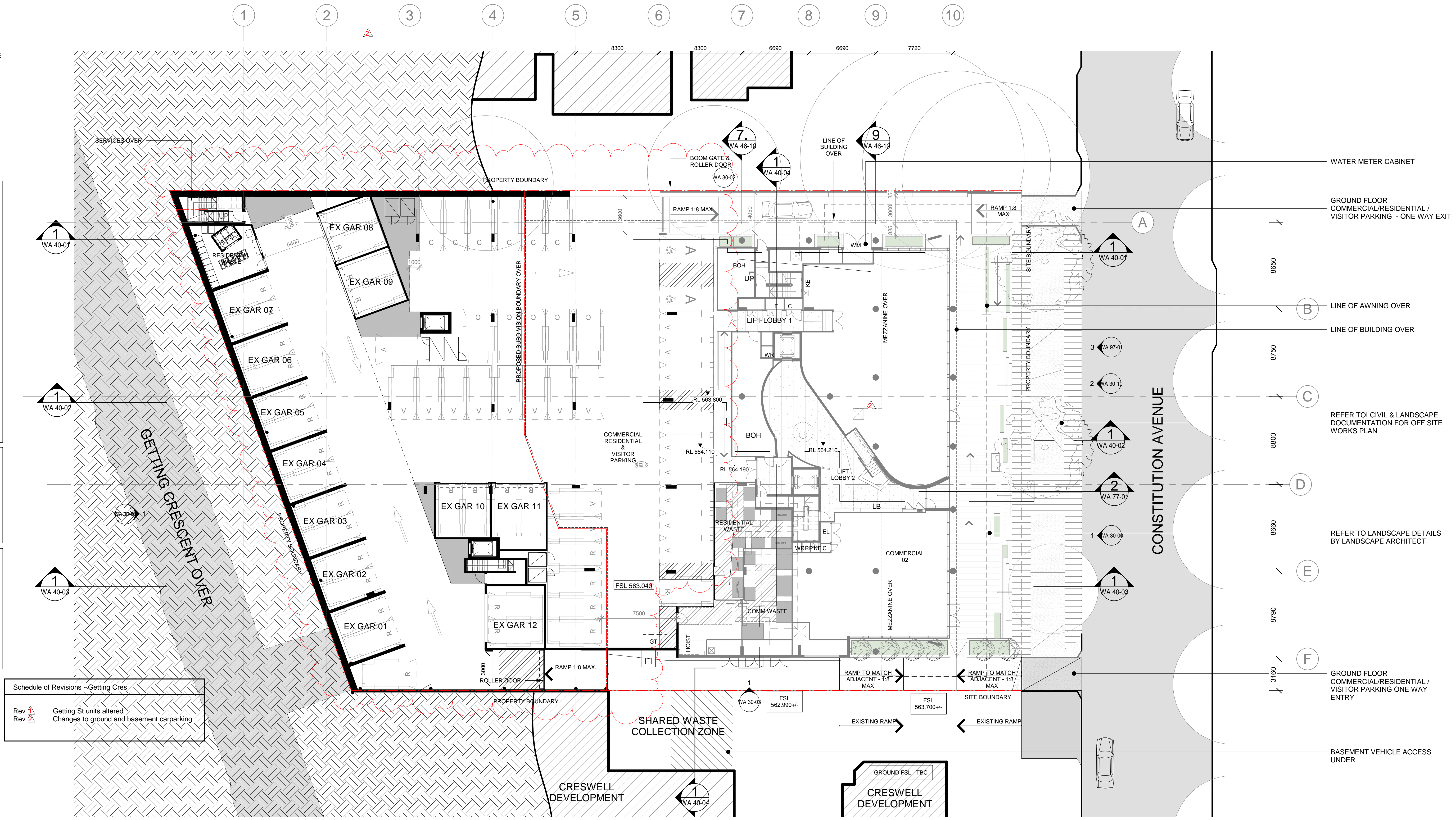
KE - KITCHEN EXHAUST
EL - ELECTRICAL RISER
C - COMMUNICATIONS RISER
RP - REFRIDGERANT PIPE RISER
WR - WATER RISER
L1/2 - RESIDENTIAL LIFT/2

ABBREVIATION LEGEND

FBBV - FIRE BRIGADE BOOSTER VALVE
BI/BE - BASEMENT INTAKE/EXHAUST
CW - COMMERCIAL WASTE ROOM
RW - RESIDENTIAL WASTE ROOM
LB - LETTERBOXES
WN - WATER METER CABINET
GT - GREASE TRAP RECESSED

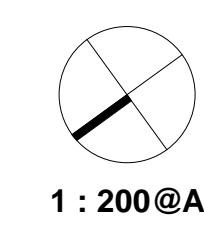
PARKING SCHEDULE - CAR

CARPARK TYPE	No. OF SPACES
BASEMENT 1	
RESIDENTIAL 5400 x 2400mm	116
	116
GROUND	
ACCESSIBLE 5400 x 2400mm ADH	2
COMMERCIAL 5400 x 2400mm	11
RESIDENTIAL 5400 x 2400mm	30
RESIDENTIAL VISITOR 5400 x 2500mm	20
	63
Grand total	179



Schedule of Revisions - Getting Cres

Rev	Description
Rev 1	Getting St units altered
Rev 2	Changes to ground and basement carparking



ACCESSIBLE NOTES:

REFER TO ACCESS REPORT SUBMITTED AS PART OF THIS WORKS APPROVAL

ALL HANDRAILS AND GRABRAILS TO MEET AS1428.1 ACCESSIBLE SANITARY FACILITIES TO MEET AS1428.1 TACTILE GROUND SURFACE INDICATORS TO BE INSTALLED ON THE ACCESSIBLE PATH OF TRAVEL IN ACCORDANCE WITH AS1428.4

ALL EXTERNAL PAVING AND GROUND SURFACES TO THE ACCESSIBLE PATH OF TRAVEL TO MEET AS4586 FOR SLIP RESISTANCE ALL STAIRWELLS TO COMPLY WITH THE BUILDING CODE OF AUSTRALIA INCLUDING TACTILE INDICATORS TO END OF FLIGHTS OF STAIRS AND CONTRASTING SLIP RESISTANT NOSING STRIPS.

LIGHTING ALONG THE ACCESSIBLE PATH OF TRAVEL TO BE INSTALLED IN ACCORDANCE WITH AS1428.1, AS1680, AS1158.3.

SIGNAGE TO MEET AS1428.1 TO IDENTIFY THE ACCESSIBLE PATH OF TRAVEL, INCLUDING BRAILLE AND TACTILE SIGNAGE. REFER SIGNAGE PLAN

REFER TO CARPARKING PLANS FOR ACCESSIBLE CARPARKING SPACES.

CORE LEGEND

KE - KITCHEN EXHAUST
 EL - ELECTRICAL RISER
 C - COMMUNICATIONS RISER
 RP - REFRIGERANT PIPE RISER
 WR - WATER RISER
 L1/2 - RESIDENTIAL LIFT/2

ABBREVIATION LEGEND

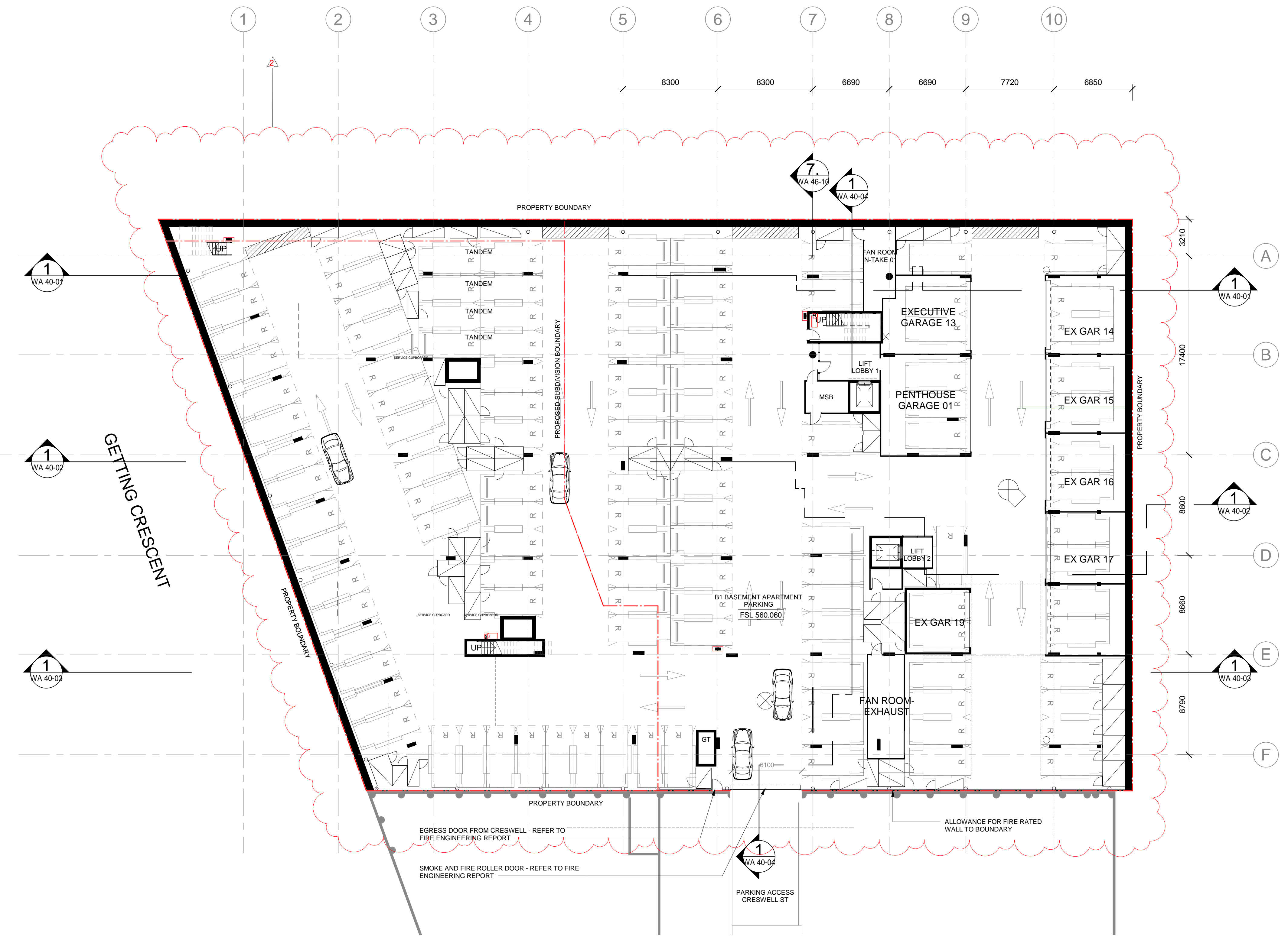
WG - WINTER GARDEN
 LB - LIGHTWELL BALCONY

PARKING SCHEDULE - CAR

CARPARK TYPE	No. OF SPACES
BASEMENT 1	
RESIDENTIAL 5400 x 2400mm	116
	116
GROUND	
ACCESSIBLE 5400 x 2400mm ADH	2
COMMERCIAL 5400 x 2400mm	11
RESIDENTIAL 5400 x 2400mm	30
RESIDENTIAL VISITOR 5400 x 2500mm	20
	63
Grand total	179

Schedule of Revisions - Getting Cres

Rev 1	Getting St units altered
Rev 2	Changes to ground and basement carparking



CONSTITUTION AVENUE

GENERAL NOTES:

TO BE READ IN CONJUNCTION WITH LANDSCAPE DRAWINGS

TENANCY LAYOUT, RETAIL CONFIGURATION AND ACCESS OFF STREET TENANCIES TO BE CONFIRMED WITH SUBSEQUENT INDIVIDUAL DEVELOPMENT APPLICATIONS

ALL LIFTS TO BE AS 1735.12 COMPLIANT
ALL ACCESSIBLE CARSPACES TO COMPLY WITH AS 2890.6-2009

ALL BASEMENT AREAS TO COMPLY WITH RELEVANT SECTIONS OF THE BCA & AUST. STANDARDS.

ALL UNITS HAVE ACCESS TO A WASTE ROOM LOCATED AT GROUND. COMMERCIAL AND RETAIL TENANTS HAVE ACCESS TO GROUND FLOOR WASTE ROOM. REFER WASTE MANAGEMENT PLAN.

STORAGE UNITS SUPPLIED FOR ALL RESIDENTIAL UNITS. BICYCLE STORAGE FOR RESIDENTIAL UNITS ACCOMMODATED WITHIN ASSOCIATED STORAGE.

BICYCLE RACKS FOR VISITORS SUPPLIED AT GROUND LEVEL AS INDICATED IN LANDSCAPE PLANS

ALL VISITOR PARKINGS IN ACCORDANCE WITH PRECINCT PARKING SUPPLY

ACCESSIBLE NOTES:

REFER TO ACCESS REPORT SUBMITTED AS PART OF THIS WORKS APPROVAL

ALL HANDRAILS AND GRABRAILS TO MEET AS1428.1 ACCESSIBLE SANITARY FACILITIES TO MEET AS1428.1 TACTILE GROUND SURFACE INDICATORS TO BE INSTALLED ON THE ACCESSIBLE PATH OF TRAVEL IN ACCORDANCE WITH AS1428.4

ALL EXTERNAL PAVING AND GROUND SURFACES TO THE ACCESSIBLE PATH OF TRAVEL TO MEET AS4586 FOR SLIP RESISTANCE ALL STAIRWELLS TO COMPLY WITH THE BUILDING CODE OF AUSTRALIA. INCLUDING TACTILE INDICATORS TO END OF FLIGHTS OF STAIRS AND CONTRASTING SLIP RESISTANT NOSING STRIPS.

LIGHTING ALONG THE ACCESSIBLE PATH OF TRAVEL TO BE INSTALLED IN ACCORDANCE WITH AS1428.1, AS1680, AS1158.3.

SIGNAGE TO MEET AS1428.1 TO IDENTIFY THE ACCESSIBLE PATH OF TRAVEL, INCLUDING BRAILLE AND TACTILE SIGNAGE. REFER SIGNAGE PLAN

REFER TO CARPARKING PLANS FOR ACCESSIBLE CARPARKING SPACES.

CORE LEGEND

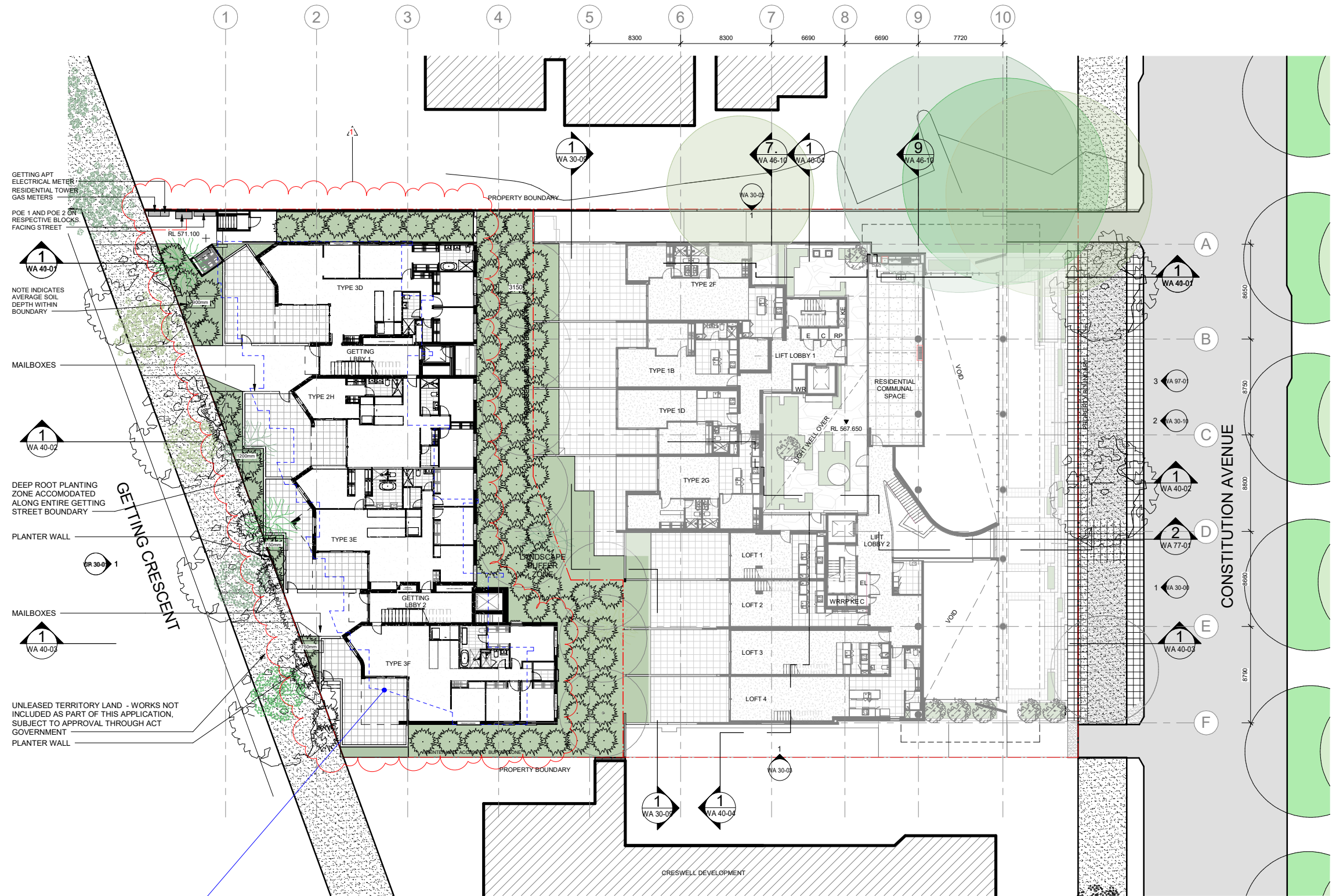
- KE - KITCHEN EXHAUST
- EL - ELECTRICAL RISER
- C - COMMUNICATIONS RISER
- RP - REFRIDGERANT PIPE RISER
- WR - WATER RISER
- L1/2 - RESIDENTIAL LIFT/2

ABBREVIATION LEGEND

- WG - WINTER GARDEN
- LB - LIGHTWELL BALCONY

Schedule of Revisions - Getting Cres

- Rev 1 Getting St units altered
- Rev 2 Changes to ground and basement carparking



OUTLINE OF PREVIOUS PROPOSAL



GENERAL NOTES:

TO BE READ IN CONJUNCTION WITH LANDSCAPE DRAWINGS
 TENANCY LAYOUT, RETAIL CONFIGURATION AND ACCESS OFF STREET TENANCIES TO BE CONFIRMED WITH SUBSEQUENT INDIVIDUAL DEVELOPMENT APPLICATIONS

ALL LIFTS TO BE AS 1735.12 COMPLIANT
 ALL ASSESSIBLE CARSPACES TO COMPLY WITH AS 2890.6-2009

ALL BASEMENT AREAS TO COMPLY WITH RELEVANT SECTIONS OF THE BCA & AUST. STANDARDS.

ALL UNITS HAVE ACCESS TO A WASTE ROOM LOCATED AT GROUND. COMMERCIAL AND RETAIL TENANTS HAVE ACCESS TO GROUND FLOOR WASTE ROOM. REFER WASTE MANAGEMENT PLAN.

STORAGE UNITS SUPPLIED FOR ALL RESIDENTIAL UNITS. BICYCLE STORAGE FOR RESIDENTIAL UNITS ACCOMMODATED WITHIN ASSOCIATED STORAGE.

BICYCLE RACKS FOR VISITORS SUPPLIED AT GROUND LEVEL AS INDICATED IN LANDSCAPE PLANS

ALL VISITOR PARKINGS IN ACCORDANCE WITH PRECINCT PARKING SUPPLY

ACCESSIBLE NOTES:

REFER TO ACCESS REPORT SUBMITTED AS PART OF THIS WORKS APPROVAL

ALL HANDRAILS AND GRABRAILS TO MEET AS1428.1 ACCESSIBLE SANITARY FACILITIES TO MEET AS1428.1 TACTILE GROUND SURFACE INDICATORS TO BE INSTALLED ON THE ACCESSIBLE PATH OF TRAVEL IN ACCORDANCE WITH AS1428.4

ALL EXTERNAL PAVING AND GROUND SURFACES TO THE ACCESSIBLE PATH OF TRAVEL TO MEET AS4586 FOR SLIP RESISTANCE ALL STAIRWELLS TO COMPLY WITH THE BUILDING CODE OF AUSTRALIA, INCLUDING TACTILE INDICATORS TO END OF FLIGHTS OF STAIRS AND CONTRASTING SLIP RESISTANT NOSING STRIPS.

LIGHTING ALONG THE ACCESSIBLE PATH OF TRAVEL TO BE INSTALLED IN ACCORDANCE WITH AS1428.1, AS1680, AS1158.3.

SIGNAGE TO MEET AS1428.1 TO IDENTIFY THE ACCESSIBLE PATH OF TRAVEL, INCLUDING BRAILLE AND TACTILE SIGNAGE. REFER SIGNAGE PLAN

REFER TO CARPARKING PLANS FOR ACCESSIBLE CARPARKING SPACES.

CORE LEGEND

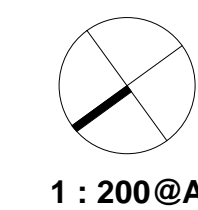
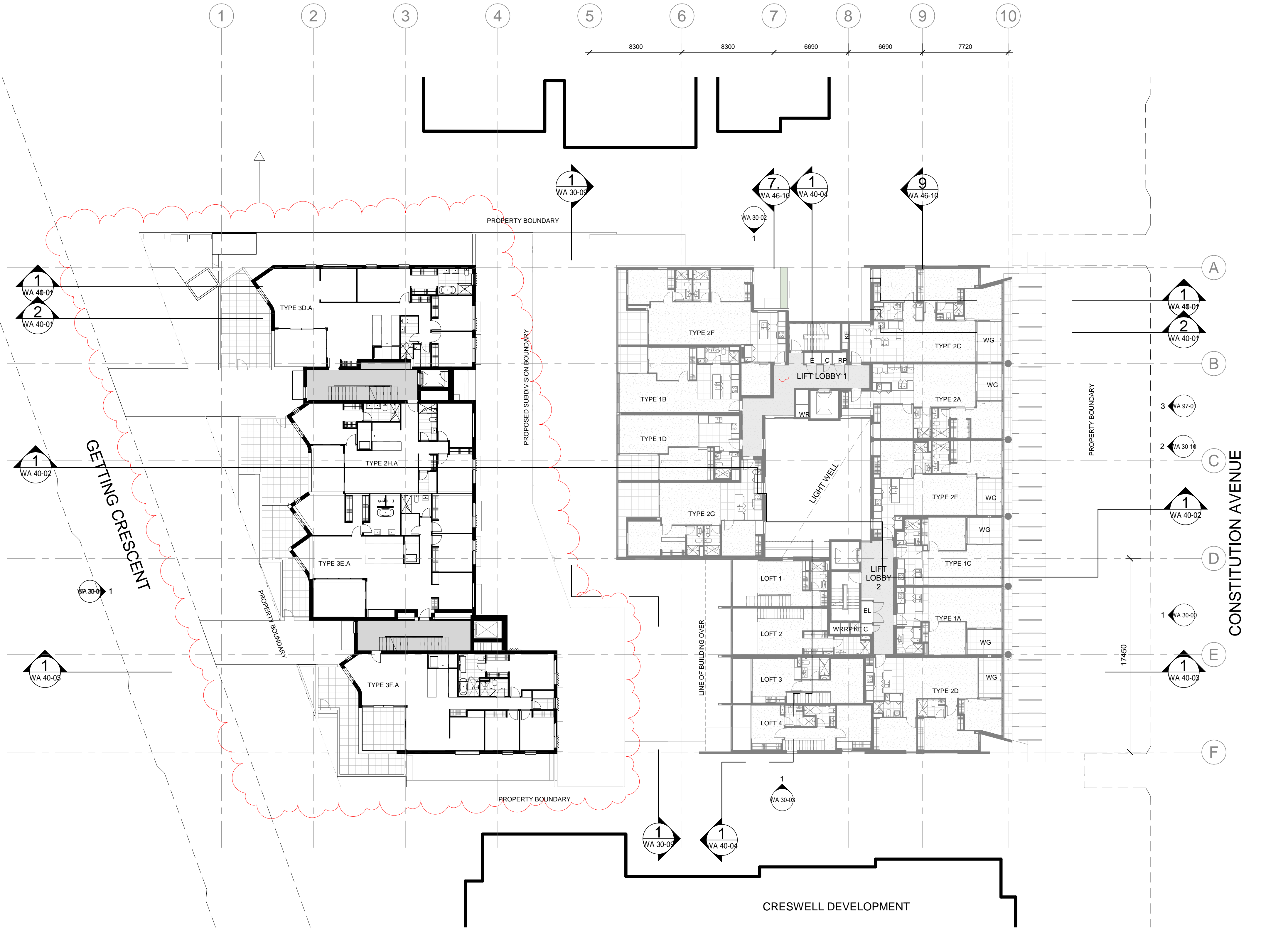
- KE - KITCHEN EXHAUST
- EL - ELECTRICAL RISER
- C - COMMUNICATIONS RISER
- RP - REFRIDGERANT PIPE RISER
- WR - WATER RISER
- L1/2 - RESIDENTIAL LIFT/2

ABBREVIATION LEGEND

- WG - WINTER GARDEN
- LB - LIGHTWELL BALCONY

Schedule of Revisions - Getting Cres

- | | |
|-------|---|
| Rev 1 | Getting St units altered |
| Rev 2 | Changes to ground and basement carparking |



GENERAL NOTES:

TO BE READ IN CONJUNCTION WITH LANDSCAPE DRAWINGS

TENANCY LAYOUT, RETAIL CONFIGURATION AND ACCESS OFF STREET TENANCIES TO BE CONFIRMED WITH SUBSEQUENT INDIVIDUAL DEVELOPMENT APPLICATIONS

ALL LIFTS TO BE AS 1735.12 COMPLIANT
ALL ASSESSIBLE CARSPACES TO COMPLY WITH AS 2890.6-2009

ALL BASEMENT AREAS TO COMPLY WITH RELEVANT SECTIONS OF THE BCA & AUST. STANDARDS.

ALL UNITS HAVE ACCESS TO A WASTE ROOM LOCATED AT GROUND. COMMERCIAL AND RETAIL TENANTS HAVE ACCESS TO GROUND FLOOR WASTE ROOM. REFER WASTE MANAGEMENT PLAN.

STORAGE UNITS SUPPLIED FOR ALL RESIDENTIAL UNITS. BICYCLE STORAGE FOR RESIDENTIAL UNITS ACCOMMODATED WITHIN ASSOCIATED STORAGE.

BICYCLE RACKS FOR VISITORS SUPPLIED AT GROUND LEVEL AS INDICATED IN LANDSCAPE PLANS

ALL VISITOR PARKINGS IN ACCORDANCE WITH PRECINCT PARKING SUPPLY

ACCESSIBLE NOTES:

REFER TO ACCESS REPORT SUBMITTED AS PART OF THIS WORKS APPROVAL

ALL HANDRAILS AND GRABRAILS TO MEET AS1428.1 ACCESSIBLE SANITARY FACILITIES TO MEET AS1428.1 TACTILE GROUND SURFACE INDICATORS TO BE INSTALLED ON THE ACCESSIBLE PATH OF TRAVEL IN ACCORDANCE WITH AS1428.4

ALL EXTERNAL PAVING AND GROUND SURFACES TO THE ACCESSIBLE PATH OF TRAVEL TO MEET AS4586 FOR SLIP RESISTANCE ALL STAIRWELLS TO COMPLY WITH THE BUILDING CODE OF AUSTRALIA, INCLUDING TACTILE INDICATORS TO END OF FLIGHTS OF STAIRS AND CONTRASTING SLIP RESISTANT NOSING STRIPS.

LIGHTING ALONG THE ACCESSIBLE PATH OF TRAVEL TO BE INSTALLED IN ACCORDANCE WITH AS1428.1, AS1680, AS1158.3.

SIGNAGE TO MEET AS1428.1 TO IDENTIFY THE ACCESSIBLE PATH OF TRAVEL, INCLUDING BRAILLE AND TACTILE SIGNAGE. REFER SIGNAGE PLAN

REFER TO CARPARKING PLANS FOR ACCESSIBLE CARPARKING SPACES.

CORE LEGEND

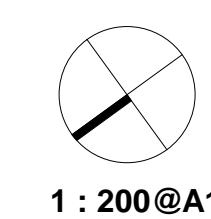
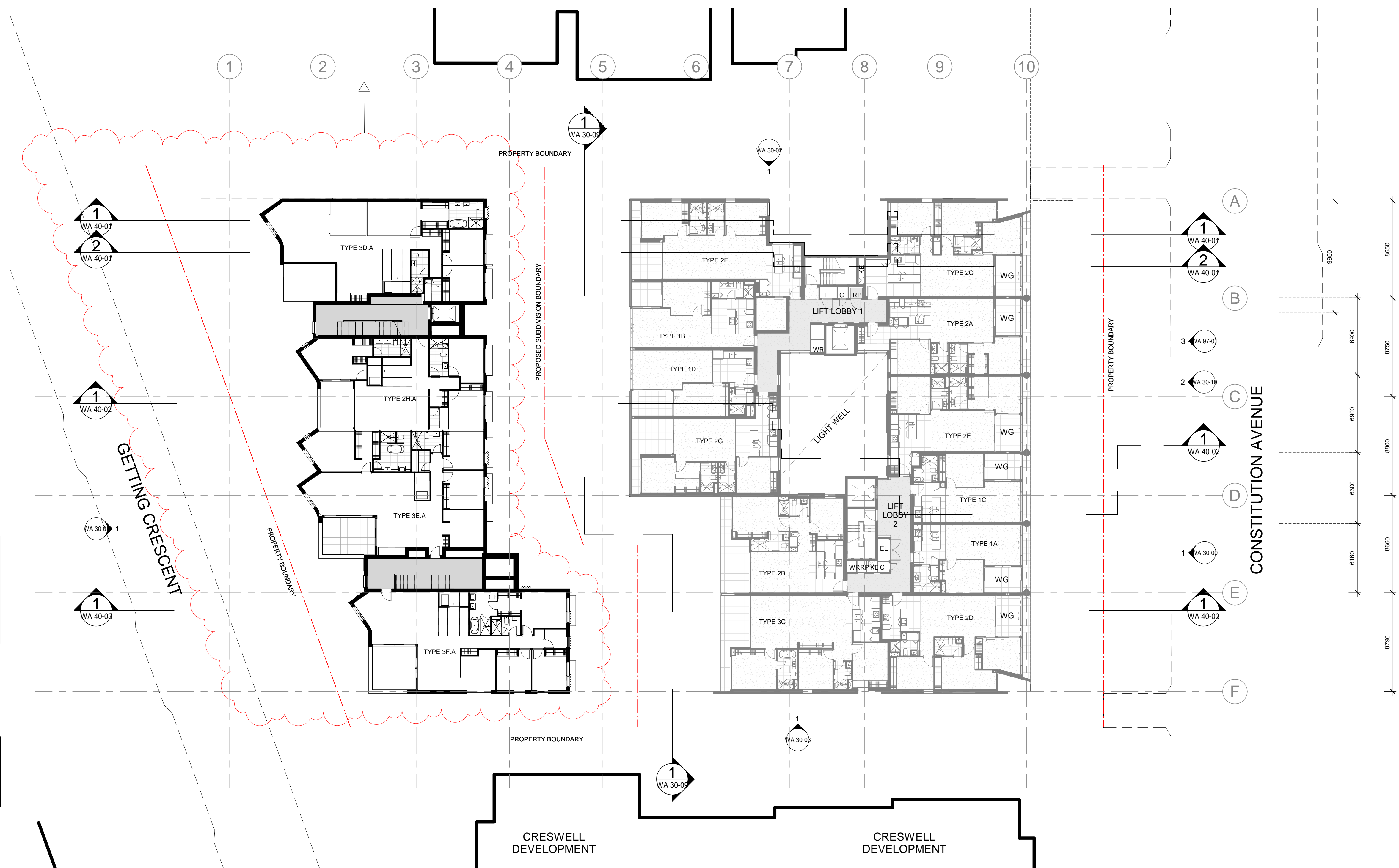
KE - KITCHEN EXHAUST
EL - ELECTRICAL RISER
C - COMMUNICATIONS RISER
RP - REFRIDGERANT PIPE RISER
WR - WATER RISER
L1/2 - RESIDENTIAL LIFT/2

ABBREVIATION LEGEND

WG - WINTER GARDEN
LB - LIGHTWELL BALCONY

Schedule of Revisions - Getting Cres

Rev 1 Getting St units altered
Rev 2 Changes to ground and basement carparking



GENERAL NOTES:

TO BE READ IN CONJUNCTION WITH LANDSCAPE DRAWINGS
 TENANCY LAYOUT, RETAIL CONFIGURATION AND ACCESS OFF STREET TENANCIES TO BE CONFIRMED WITH SUBSEQUENT INDIVIDUAL DEVELOPMENT APPLICATIONS

ALL LIFTS TO BE AS 1735.12 COMPLIANT
 ALL ASSESSIBLE CARSPACES TO COMPLY WITH AS 2890.6-2009

ALL BASEMENT AREAS TO COMPLY WITH RELEVANT SECTIONS OF THE BCA & AUST. STANDARDS.

ALL UNITS HAVE ACCESS TO A WASTE ROOM LOCATED AT GROUND. COMMERCIAL AND RETAIL TENANTS HAVE ACCESS TO GROUND FLOOR WASTE ROOM. REFER WASTE MANAGEMENT PLAN.

STORAGE UNITS SUPPLIED FOR ALL RESIDENTIAL UNITS. BICYCLE STORAGE FOR RESIDENTIAL UNITS ACCOMMODATED WITHIN ASSOCIATED STORAGE.

BICYCLE RACKS FOR VISITORS SUPPLIED AT GROUND LEVEL AS INDICATED IN LANDSCAPE PLANS

ALL VISITOR PARKINGS IN ACCORDANCE WITH PRECINCT PARKING SUPPLY

ACCESSIBLE NOTES:

REFER TO ACCESS REPORT SUBMITTED AS PART OF THIS WORKS APPROVAL

ALL HANDRAILS AND GRABRAILS TO MEET AS1428.1 ACCESSIBLE SANITARY FACILITIES TO MEET AS1428.1 TACTILE GROUND SURFACE INDICATORS TO BE INSTALLED ON THE ACCESSIBLE PATH OF TRAVEL IN ACCORDANCE WITH AS1428.4

ALL EXTERNAL PAVING AND GROUND SURFACES TO THE ACCESSIBLE PATH OF TRAVEL TO MEET AS4586 FOR SLIP RESISTANCE ALL STAIRWELLS TO COMPLY WITH THE BUILDING CODE OF AUSTRALIA. INCLUDING TACTILE INDICATORS TO END OF FLIGHTS OF STAIRS AND CONTRASTING SLIP RESISTANT NOSING STRIPS.

LIGHTING ALONG THE ACCESSIBLE PATH OF TRAVEL TO BE INSTALLED IN ACCORDANCE WITH AS1428.1, AS1680, AS1158.3.

SIGNAGE TO MEET AS1428.1 TO IDENTIFY THE ACCESSIBLE PATH OF TRAVEL, INCLUDING BRAILLE AND TACTILE SIGNAGE. REFER SIGNAGE PLAN

REFER TO CARPARKING PLANS FOR ACCESSIBLE CARPARKING SPACES.

CORE LEGEND

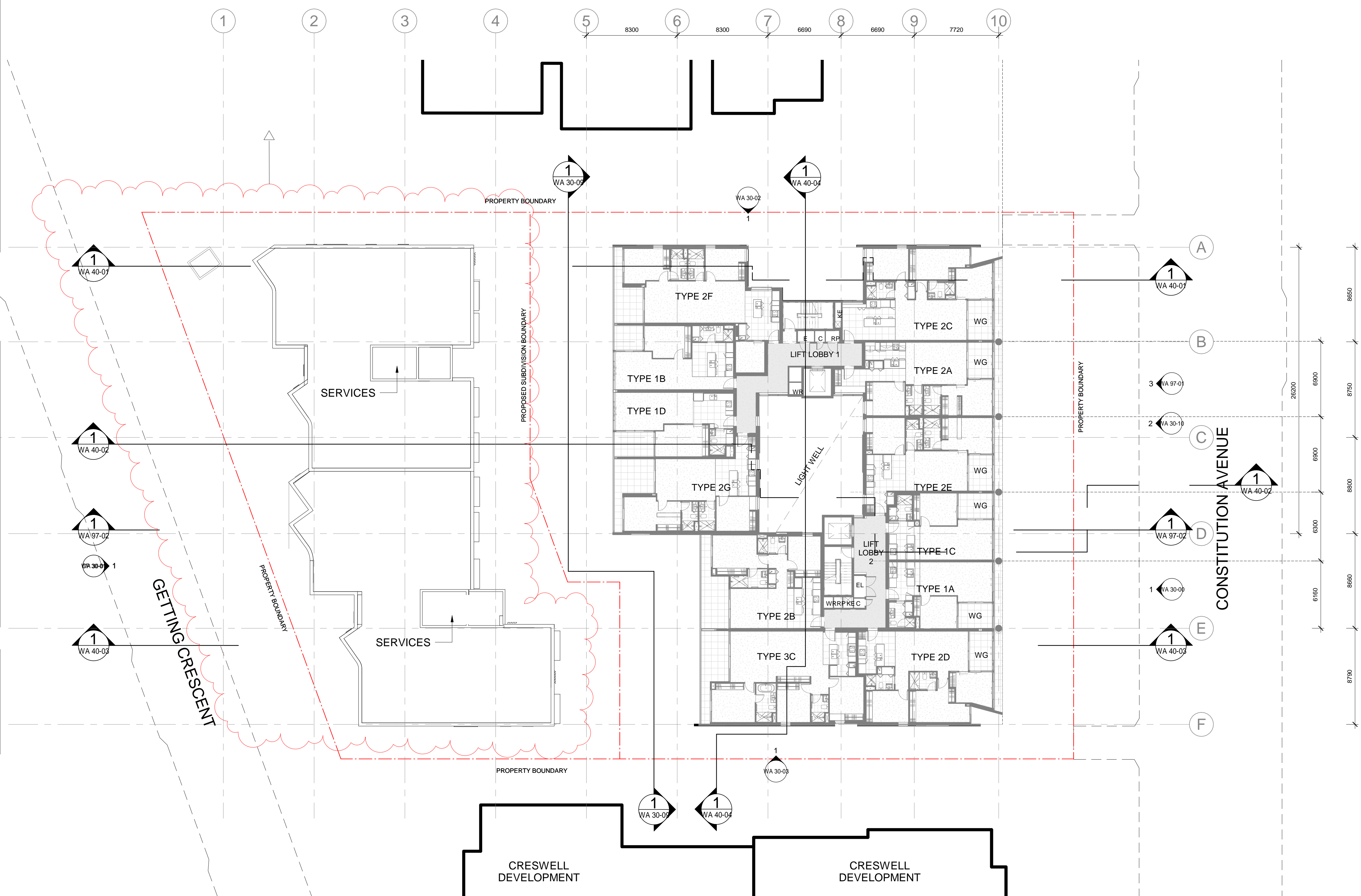
- KE - KITCHEN EXHAUST
- EL - ELECTRICAL RISER
- C - COMMUNICATIONS RISER
- RP - REFRIDGERANT PIPE RISER
- WR - WATER RISER
- L1/2 - RESIDENTIAL LIFT/2

ABBREVIATION LEGEND

- WG - WINTER GARDEN
- LB - LIGHTWELL BALCONY

Schedule of Revisions - Getting Cres

- Rev. A Getting St units altered
- Rev. B Changes to ground and basement carparking





BK3 - BRICK - TYPE 3
BRICKWORK - STRETCHER BOND - FLUSH JOINT - WHITE



BK4 - BRICK - TYPE 4
BRICKWORK - STRETCHER BOND - FLUSH JOINT - SAND



AGWS1 - ALUMINIUM GLAZED WINDOW SUITE - TYPE 1
ALUMINIUM FRAMED WINDOW SUITE - POWDER COATED - WINDSPRAY (GREY). CLEAR GLASS.



BAL 3 - BALUSTRADE - TYPE 3
BRICK BALUSTRADE TO 600 ABOVE FFL. CLEAR GLASS



Schedule of Revisions - Getting Cres	
Rev 1	Getting St units altered
Rev 2	Changes to ground and basement carparking



TOWNHOUSES SOUTH ELEVATION
SCALE 1 : 200

Schedule of Revisions - Getting Cres	
Rev. A	Getting St units altered
Rev. B	Changes to ground and basement carparking