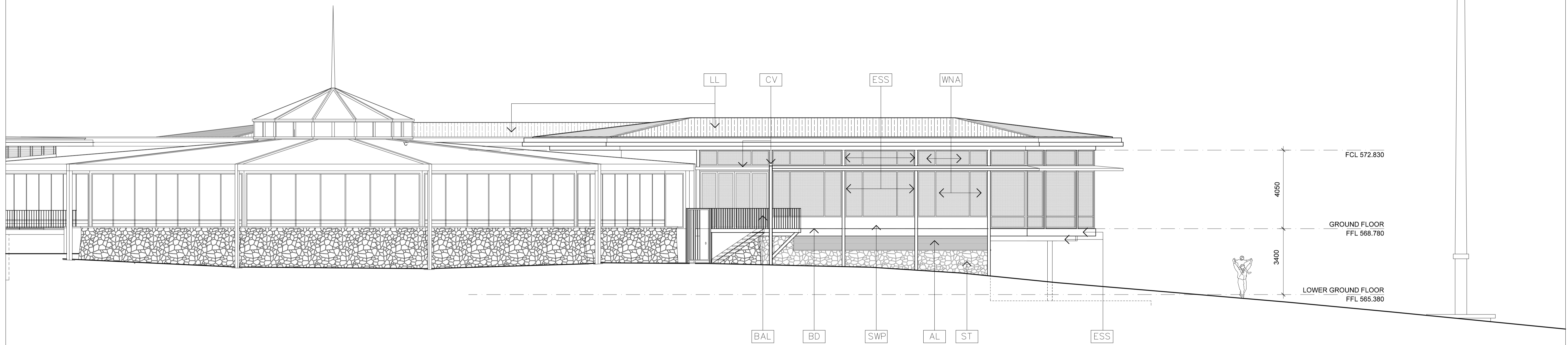
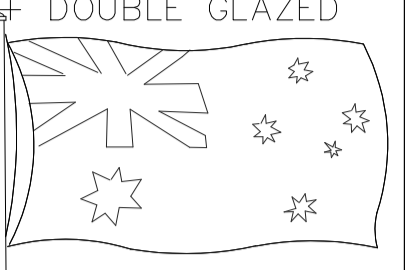


MATERIALS LEGEND

- LL LYSAGHT 'LONGLINE 305' COLORBOND SURFMIST
- ESS EXTERNAL STRUCTURAL STEEL, PAINTED WITH 2 PACK SYSTEM
- BAL BALUSTRADES STEEL FLATS, PAINT FINISH WHITE 2 PACK
- WNA NATURAL ANNODIZED ALUMINIUM SLIDING DOOR/WINDOW FRAMES THERMALLY BROKEN + DOUBLE GLAZED
- BD NOM 130x30 DAR KD BLACKBUTT DECKING
- PLD PERFORATED NATURAL ANNODIZED ALUMINIUM PANEL LIFT DOOR, DARK GREY
- ST PIALIGO STONE RANDOM RUBBLE TO MATCH EXISTING
- SWP PAINTED WHITE STEEL WALL PANELS
- CS CONCRETE STEPS
- AL ALUMINIUM POWDER COATED DARK GREY LOUVRES
- SP STEEL PERGOLA, PAINTED WITH 2 PACK SYSTEM

- RHS STAIR STRUCTURE 200X100X6 RHS



ISSUE: A	ISSUED FOR WORKS APPROVAL	DATE: 21.01.20	CONSULTANTS:	ARCHITECT: T+AA Townsend + Associates Architects E info@t-a.com.au P (02) 6257 7033	PROJECT: REGATTA POINT ALTERATIONS + ADDITIONS	NORTH POINT 	DRAWING TITLE: SOUTH ELEVATION	DRAWING NO. A202				
				SCALE BAR: 	CLIENT: 	STAGE: WORKS APPROVAL						
						DRAWN: BT, AE	CHECKED: -	VERIFIED: -	DATE: JAN 2020	SCALE: 1:200 @ A3 1:100 @ A1	JOB NO. 1903	ISSUE: A