

PRIMARY MATERIALS
 STEEL PORTAL FRAMES
 250 X 150 RHS
 POWDERCOAT FINISH TEXTURED
 - COLOUR MEDIUM BRONZE

ROOF CLADDING
 PROFILED ROOF SHEET
 0.48BMT
 COLORBOND FINISH
 - COLOUR LOFT

SOFFIT CLADDING
 4mm ALUMINIUM COMPOSITE SHEET
 STACKBOND CONFIGURATION
 MIRROR FINISH
 - COLOUR SILVER

SOFFIT EDGE
 LARGE APETURE PERFORATED 4mm
 ALUMINIUM SHEET - FOLDED EDGE
 POWDERCOAT METALLIC FINISH
 COLOUR LIGHT BRONZE

BATTEN SCREEN
 125 X 50mm ALUMINIUM BATTENS
 FIXED TO STEEL FRAME -
 POWDERCOAT METALLIC FINISH
 COLOUR LIGHT BRONZE

BBQ BENCH
 OXIDE COLOURED CONCRETE BENCH
 TOP WITH PERFORATED METAL
 INFILL TO UNDERBENCH SERVICES
 DOORS
 HONED FINISH TO BENCH
 POWDERCOAT FINISH TO
 STEELWORK
 COLOUR LIGHT BRONZE / CHARCOAL

SERVICES

WATER
 COLD WATER SUPPLY TO SINK
 INSET TO CONCRETE BENCH

POWER
 WEATHER RATED CLEANERS GPO TO
 UNDERBENCH SERVICES CUPBOARDS

POWER SUPPLY TO COOKTOPS
 RETICULATED THROUGH
 UNDERBENCH SERVICES CUPBOARD

EXTERNAL SERVICES
 ADDITIONAL CONTROLLERS AND
 SWITCHBOARDS TO BE LOCATED
 UNDERBENCH SERVICES CUPBOARDS
 (CONFIRM SIZES)

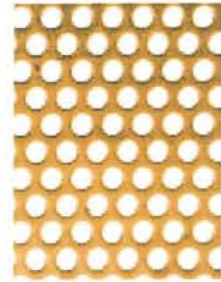
LIGHTING

LED PERIMETER STRIP TO SOFFIT
 SHADOWLINE - LINEALUCE BH19
 FACADE LIGHTING

IN GROUND UPLIGHTERS TO
 COLUMNS - IGUZZINI LIGHT UP BD25
 GROUND RECESSED LUMINAIRE



STEEL FRAMED PORTAL



LARGE APETURE PERFORATED SOFFIT



ALUMINIUM BATTEN SCREEN



MIRROR FINISH SOFFIT



WIDE PAN ROOF SHEET AND SPANDREL



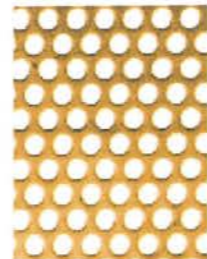
PRECAST CONCRETE BBQ BENCH - OXIDE
 FINISH / STEEL ACCESS PANELS /
 STAINLESS STEEL HOTPLATE AND SINK



LYSAGHT INTEGRITY 820



PUBLIC REALM TYPE BBQ, ELECTRIC OR
 GAS OPTION



LARGE APETURE PERFORATED
 CLADDING TO UNDERBENCH SERVICES
 DOORS AND FRAME



POWDERCOAT FINISH - TYPE 01
 INTERPON D2015 ULTRIVA
 COLOUR - SABLE MEDIUM BRONZE TEXTURE
 YY366A



POWDERCOAT FINISH - TYPE 02
 INTERPON D2015 ULTRIVA
 COLOUR - PRECIS PURE GOLD
 YY22BA



ALUMINIUM COMPOSITE PANEL - TYPE 01
 ALUCOBOND NATURAL SERIES
 COLOUR - SILVER
 FINISH - MIRROR



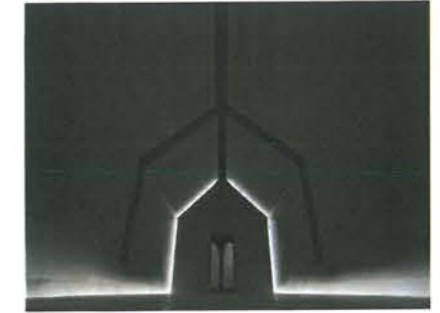
ROOF CLADDING - TYPE 01
 COLOUR - LOFT
 FINISH - COLORBOND



CONCRETE FINISH - TYPE 01
 COLOUR - DARK OXIDE
 TEXTURE - HONED

LIGHTING CONCEPT

SOFFIT LIGHTING
 RECESSED PERIMETER LIGHTING STRIP IN
 A CONTINUOUS LED STRIP - LED CAN BE
 COLOUR CONTROLLED WITH THE INTENT
 TO PROVIDE A SOFT WARM TONE TO
 THE SOFFIT.



RECESSED LIGHT WELL PROVIDES ACCENT

LIGHTING CONCEPT

UPLIGHTING
 RECESSED IN-GROUND UPLIGHTS
 LOCATED ON ADJACENT SIDES OF THE
 TWO OUTER MOST COLUMNS WILL
 PROVIDE A LIGHT WASH TO THE
 COLUMNS AND ACCENT THE PORTAL
 WHILST HIGHLIGHTING THE LINEAR FORM
 OF THE STRUCTURE FROM AN EXTERNAL
 ASPECT.



IN GROUND UPLIGHTERS TO COLUMN BASES

This drawing is confidential and shall only be used for the purpose of this project. The signing of this title block confirms the design and drafting of this project have been prepared and checked in accordance with the AECOM quality assurance system to ISO 9001-2000.



CONSULTANT
 AECOM Australia Pty Ltd
 A.B.N 20 093 846 925
 www.aecom.com

PROJECT
 PARKES SECTION 3
 BLOCK 6

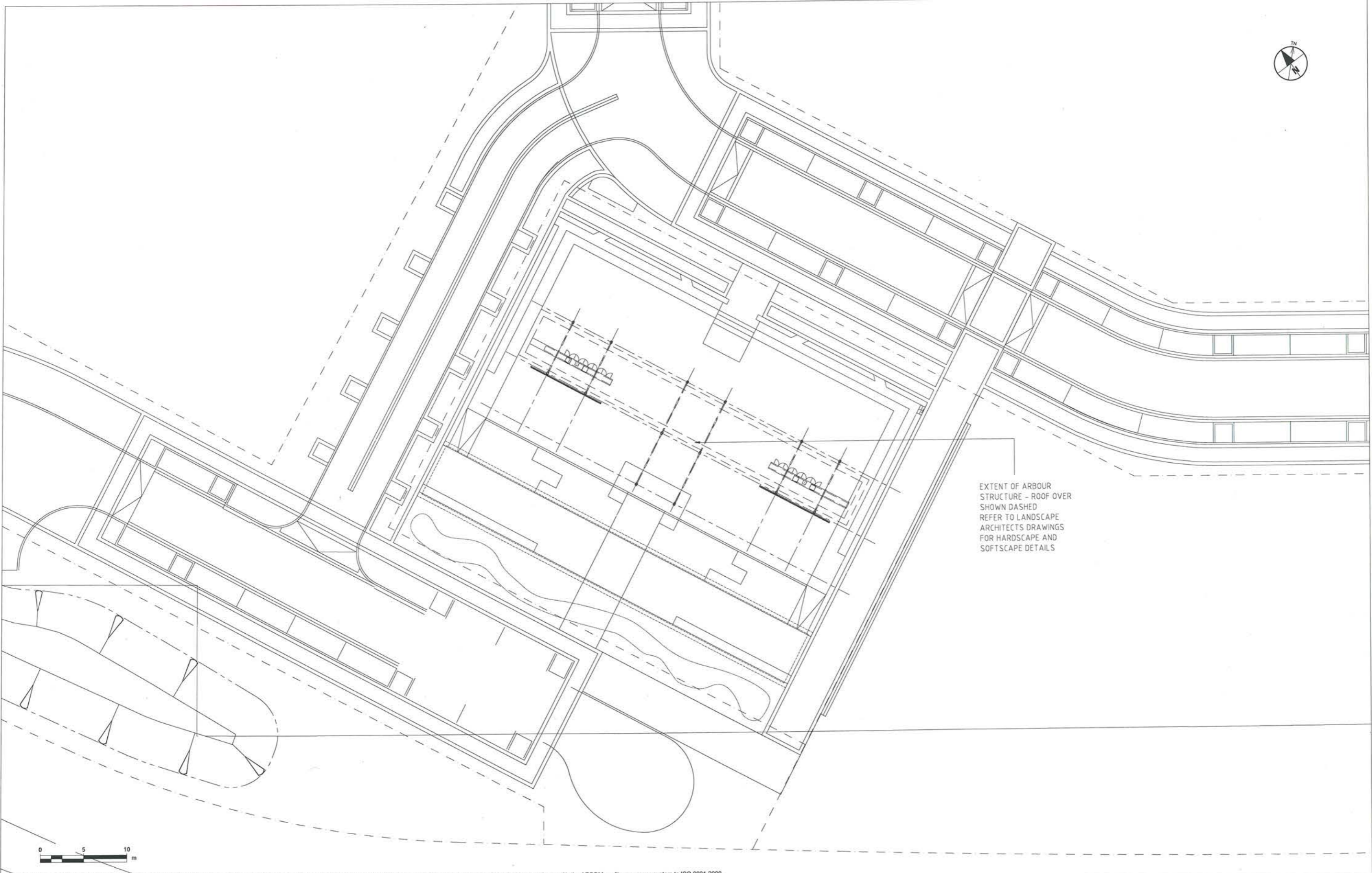
CLIENT
 LAND DEVELOPMENT AGENCY
 Level 6 TransACT House
 470 Northbourne Avenue,
 Dickson ACT 2602
 02 62073001 tel 02 6207 6110 fax
 www.lida.act.gov.com
 A.B.N 20 419 925 579

REGISTRATION
NOT FOR CONSTRUCTION

PROJECT MANAGEMENT INITIALS		
JL	CJ	PG
DESIGNER	CHECKED	APPROVED
PROJECT DATA		
DATUM	SURVEY	

ISSUE/REVISION		
A	05.03.15	80% DD
IR	DATE	DESCRIPTION

PROJECT NUMBER
 60314240
SHEET TITLE
 MATERIALS AND COLOURS PALLETTE
 ARBOUR STRUCTURE
SHEET NUMBER
 60314240-SHT-20-NRTH-AR-9000



EXTENT OF ARBOUR
STRUCTURE - ROOF OVER
SHOWN DASHED
REFER TO LANDSCAPE
ARCHITECTS DRAWINGS
FOR HARDSCAPE AND
SOFTSCAPE DETAILS



This drawing is confidential and shall only be used for the purpose of this project. The signing of this title block confirms the design and drafting of this project have been prepared and checked in accordance with the AECOM quality assurance system to ISO 9001-2000.

AECOM
CONSULTANT
AECOM Australia Pty Ltd
A.B.N 20 093 846 925
www.aecom.com

PROJECT
PARKES SECTION 3
BLOCK 6

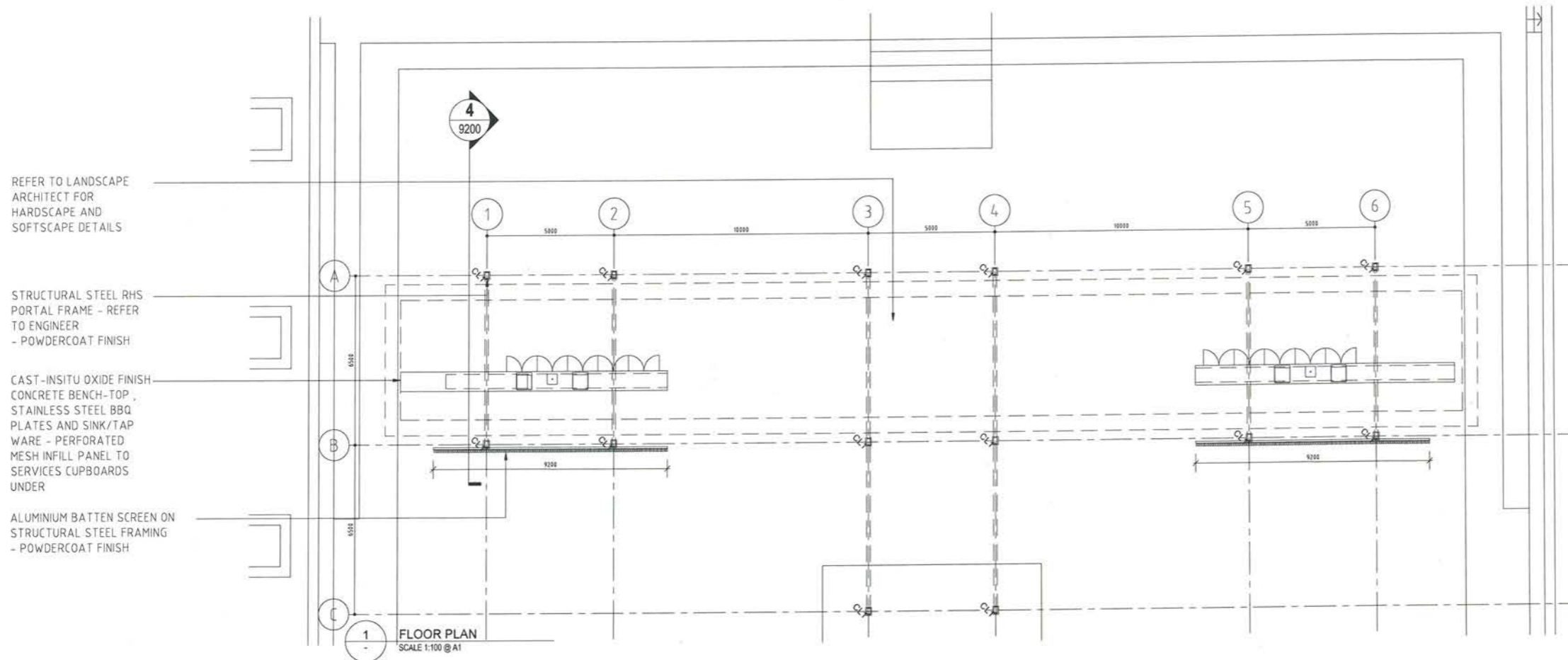
CLIENT
LAND DEVELOPMENT AGENCY
Level 6 TransACT House
470 Northbourne Avenue,
Dickson ACT 2602
02 62073001 tel 02 6207 6110 fax
www.lda.act.gov.au
A.B.N 20 419 925 579

REGISTRATION
NOT FOR CONSTRUCTION

PROJECT MANAGEMENT INITIALS		
JL	CJ	PG
DESIGNER	CHECKED	APPROVED
PROJECT DATA		
DATUM	SURVEY	

ISSUE/REVISION		
A	05.03.15	80% DD
IR	DATE	DESCRIPTION

PROJECT NUMBER
60314240
SHEET TITLE
SITE PLAN
ARBOUR STRUCTURE
SHEET NUMBER
60314240-SHT-20-NRTH-AR-9100



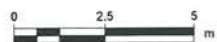
REFER TO LANDSCAPE ARCHITECT FOR HARDSCAPE AND SOFTSCAPE DETAILS

STRUCTURAL STEEL RHS PORTAL FRAME - REFER TO ENGINEER - POWDERCOAT FINISH

CAST-INSITU OXIDE FINISH CONCRETE BENCH-TOP, STAINLESS STEEL BBQ PLATES AND SINK/TAP WARE - PERFORATED MESH INFILL PANEL TO SERVICES CUPBOARDS UNDER

ALUMINIUM BATTEN SCREEN ON STRUCTURAL STEEL FRAMING - POWDERCOAT FINISH

FLOOR PLAN SCALE 1:100 @ A1



This drawing is confidential and shall only be used for the purpose of this project. The signing of this title block confirms the design and drafting of this project have been prepared and checked in accordance with the AECOM quality assurance system to ISO 9001-2000.



CONSULTANT
AECOM Australia Pty Ltd
A.B.N 20 093 846 925
www.aecom.com

PROJECT
PARKES SECTION 3
BLOCK 6

CLIENT
LAND DEVELOPMENT AGENCY
Level 6 TransACT House
470 Northbourne Avenue,
Dickson ACT 2602
02 62073001 tel 02 6207 6110 fax
www.lda.act.gov.com
A.B.N 20 419 925 579

REGISTRATION

NOT FOR CONSTRUCTION

PROJECT MANAGEMENT INITIALS

JL	CJ	PG
DESIGNER	CHECKED	APPROVED

PROJECT DATA

DATUM	SURVEY
-------	--------

ISSUE/REVISION

IR	DATE	DESCRIPTION
A	05.03.15	80% DD

PROJECT NUMBER

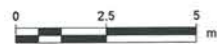
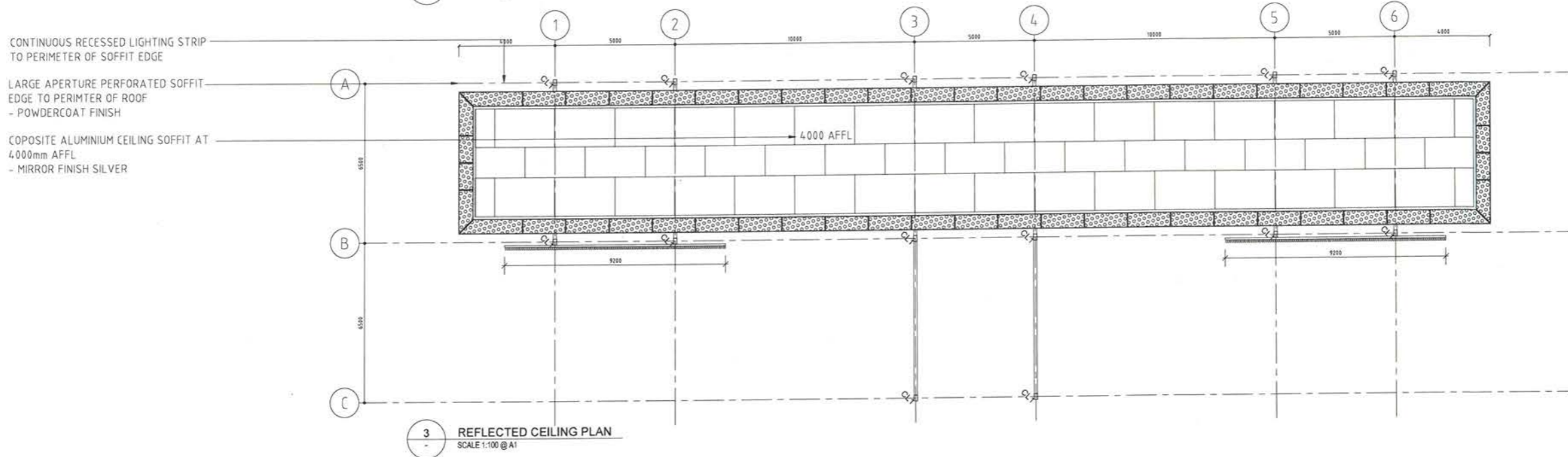
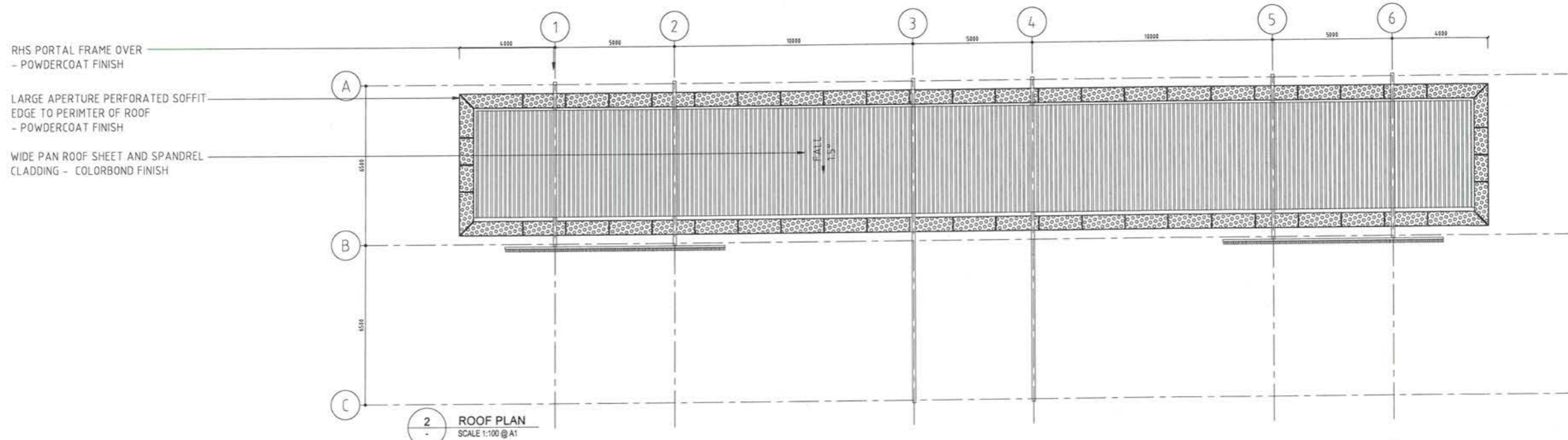
60314240

SHEET TITLE

FLOOR PLAN
ARBOUR STRUCTURE

SHEET NUMBER

60314240-SHT-20-NRTH-AR-9101



This drawing is confidential and shall only be used for the purpose of this project. The signing of this title block confirms the design and drafting of this project have been prepared and checked in accordance with the AECOM quality assurance system to ISO 9001-2000.

Last saved by: LACKMANNJ(2015-03-05) Last Plotted: 2015-03-10
Filename: \\AUCBR\FP001\PROJECTS\CBR\60314240_PARKES_SEC3\5_CAD\02-SHEETS\02_DR\20_CBR\60314240-SHT-20-NRTH-AR-9102.DWG

AECOM
CONSULTANT
AECOM Australia Pty Ltd
A.B.N 20 093 846 925
www.aecom.com

PROJECT
**PARKES SECTION 3
BLOCK 6**

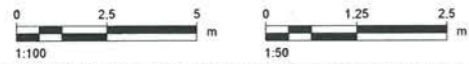
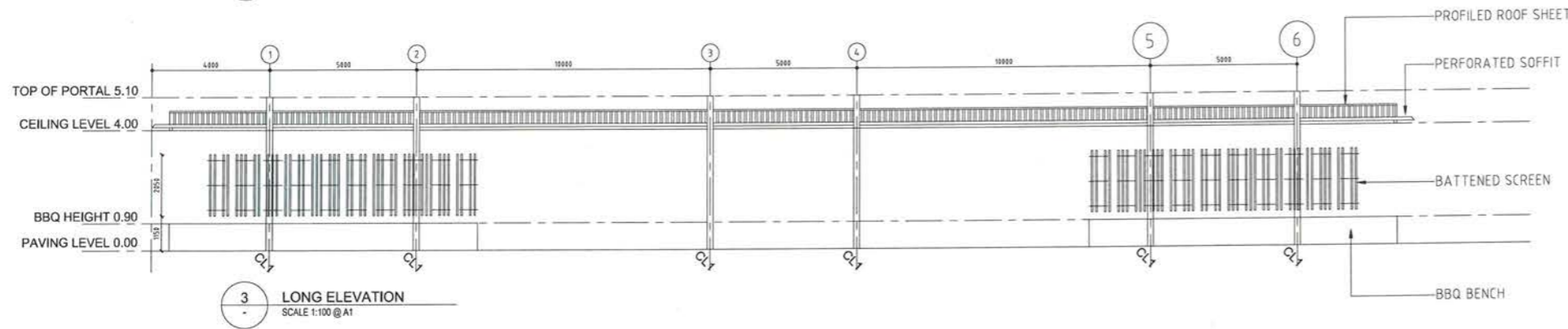
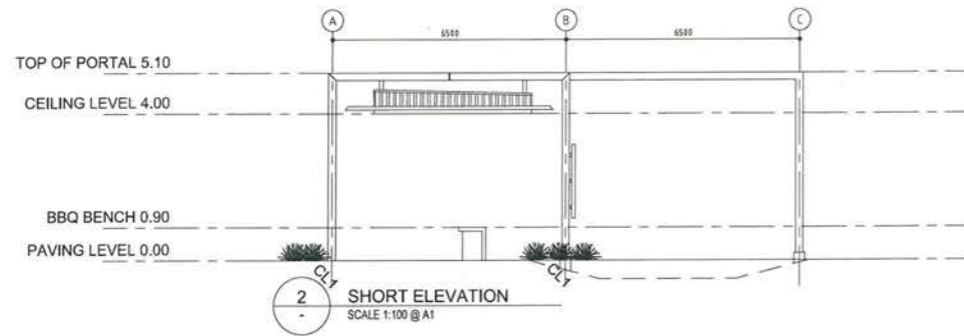
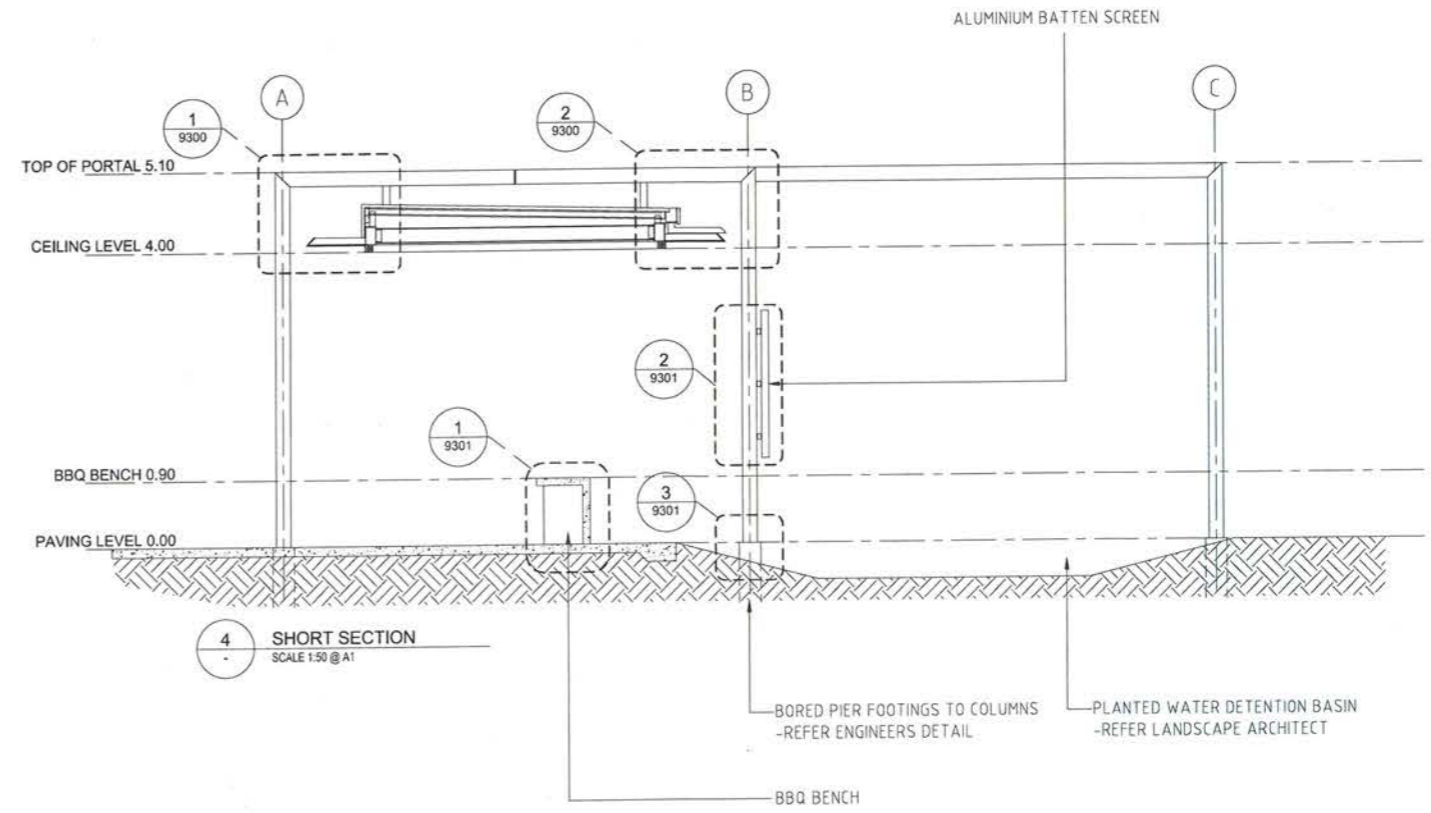
CLIENT
LAND DEVELOPMENT AGENCY
Level 6 TransACT House
470 Northbourne Avenue,
Dickson ACT 2602
02 62073001 tel 02 6207 6110 fax
www.lda.act.gov.com
A.B.N 20 419 925 579

REGISTRATION
NOT FOR CONSTRUCTION

PROJECT MANAGEMENT INITIALS		
JL	CJ	PG
DESIGNER	CHECKED	APPROVED
PROJECT DATA		
DATUM	SURVEY	

ISSUE/REVISION		
A	05.03.15	80% DD
IR	DATE	DESCRIPTION

PROJECT NUMBER
60314240
SHEET TITLE
ROOF / REFLECTED CEILING PLAN
ARBOUR STRUCTURE
SHEET NUMBER
60314240-SHT-20-NRTH-AR-9102



This drawing is confidential and shall only be used for the purpose of this project. The signing of this title block confirms the design and drafting of this project have been prepared and checked in accordance with the AECOM quality assurance system to ISO 9001-2000.



AECOM Australia Pty Ltd
 A.B.N 20 093 846 925
 www.aecom.com

PROJECT
 PARKES SECTION 3
 BLOCK 6

CLIENT
 LAND DEVELOPMENT AGENCY
 Level 6 TransACT House
 470 Northbourne Avenue,
 Dickson ACT 2602
 02 62073001 tel 02 6207 6110 fax
 www.lda.act.gov.com
 A.B.N 20 419 925 579

REGISTRATION

NOT FOR CONSTRUCTION

PROJECT MANAGEMENT INITIALS

JL	CJ	PG
DESIGNER	CHECKED	APPROVED

PROJECT DATA

DATUM	SURVEY
-------	--------

ISSUE/REVISION

NO	DATE	DESCRIPTION
A	05.03.15	80% DD
IR	DATE	DESCRIPTION

PROJECT NUMBER

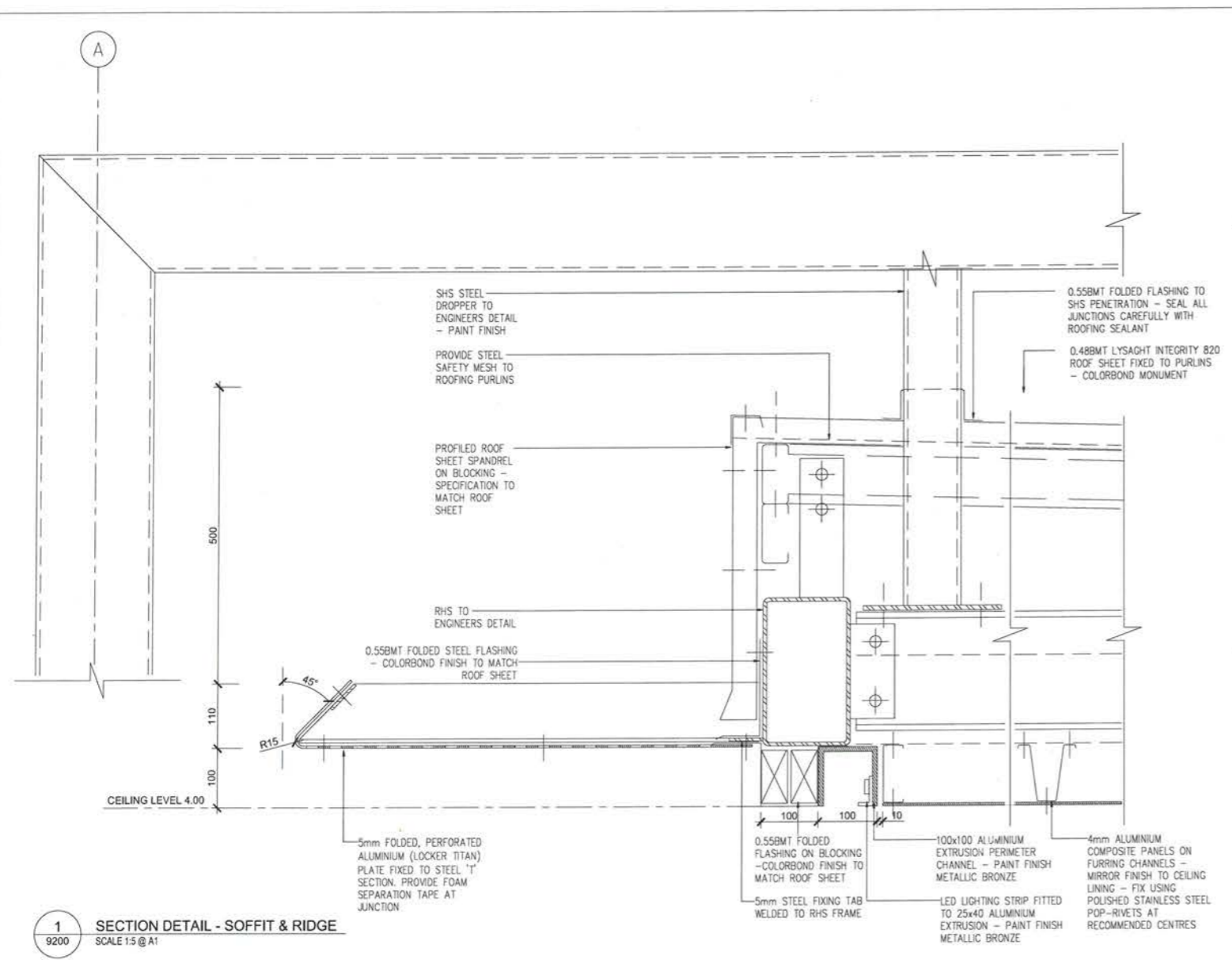
60314240

SHEET TITLE

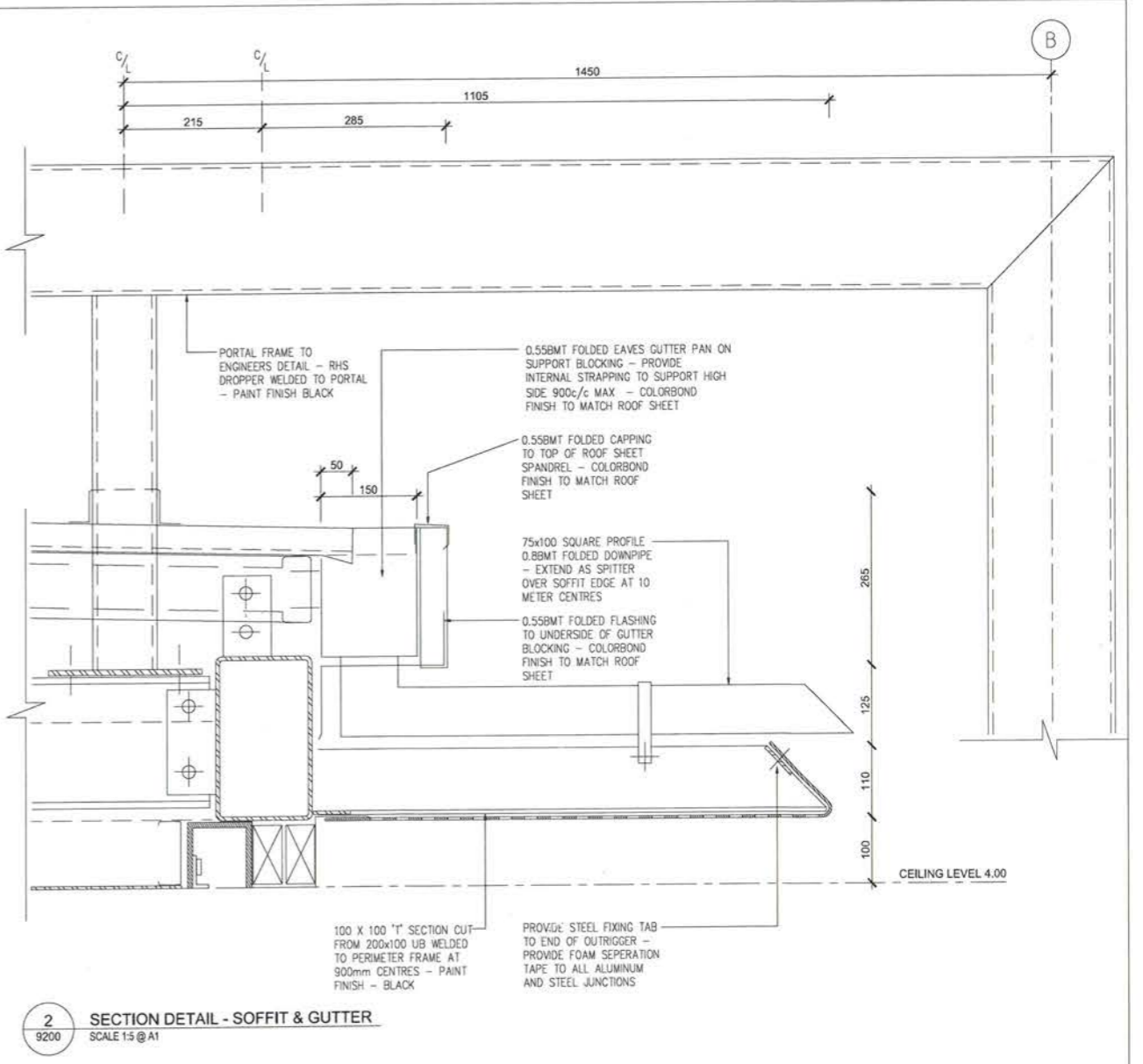
ELEVATIONS / SECTION
 ARBOUR STRUCTURE

SHEET NUMBER

60314240-SHT-20-NRTH-AR-9200



1 SECTION DETAIL - SOFFIT & RIDGE
 9200 SCALE 1:5 @ A1



2 SECTION DETAIL - SOFFIT & GUTTER
 9200 SCALE 1:5 @ A1

This drawing is confidential and shall only be used for the purpose of this project. The signing of this title block confirms the design and drafting of this project have been prepared and checked in accordance with the AECOM quality assurance system to ISO 9001-2000.

PROJECT MANAGEMENT INITIALS

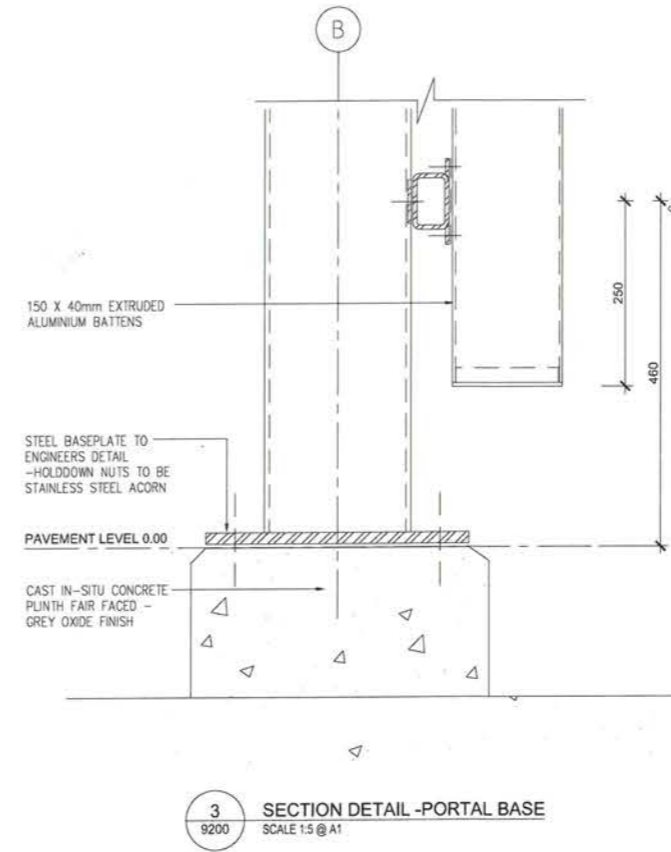
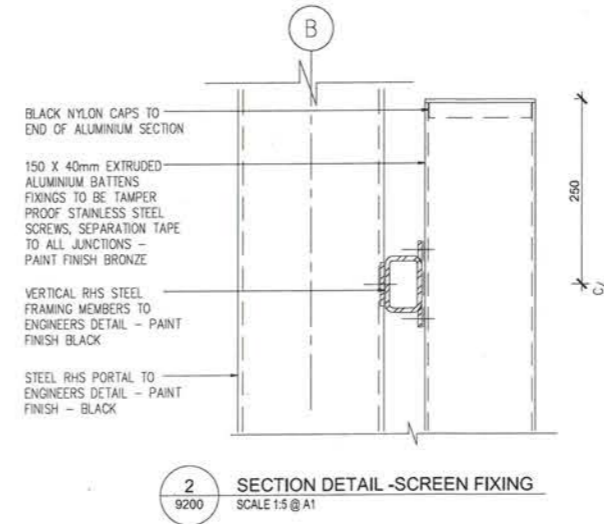
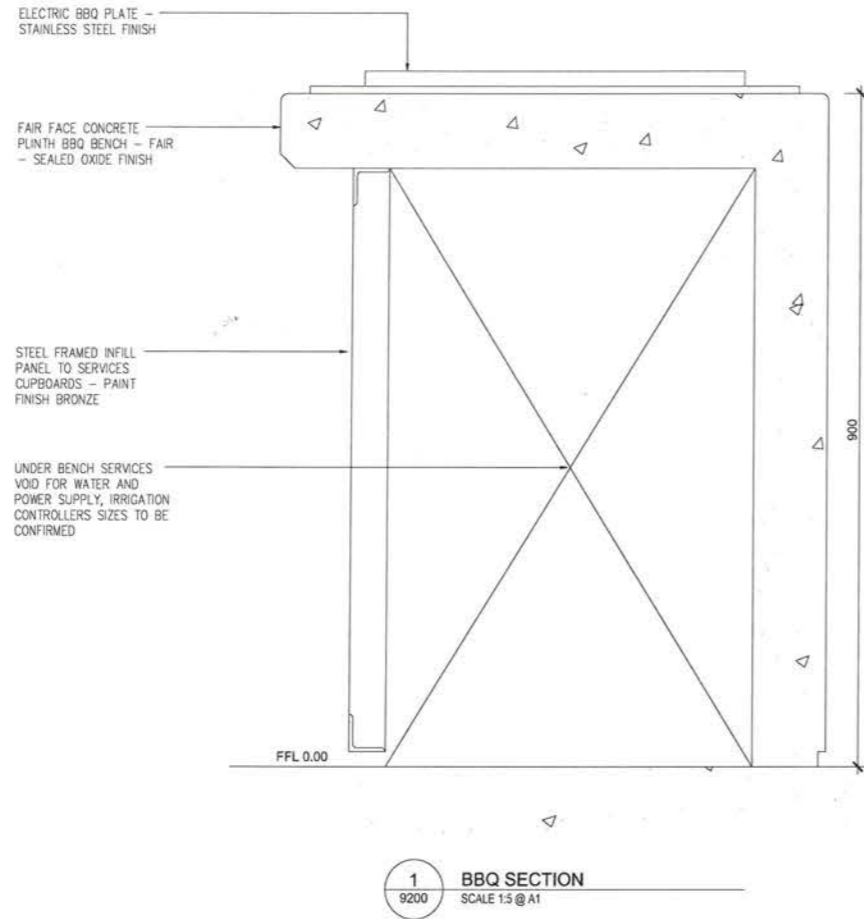
JL	CJ	PG
DESIGNER	CHECKED	APPROVED

PROJECT DATA

DATUM	SURVEY
-------	--------

ISSUE/REVISION

IR	DATE	DESCRIPTION
A	05.03.15	80% DD



This drawing is confidential and shall only be used for the purpose of this project. The signing of this title block confirms the design and drafting of this project have been prepared and checked in accordance with the AECOM quality assurance system to ISO 9001:2000.

AECOM

CONSULTANT
 AECOM Australia Pty Ltd
 A.B.N 20 093 846 925
 www.aecom.com

PROJECT
**PARKES SECTION 3
 BLOCK 6**

CLIENT
LAND DEVELOPMENT AGENCY
 Level 6 TransACT House
 470 Northbourne Avenue,
 Dickson ACT 2602
 02 62073001 tel 02 6207 6110 fax
 www.lda.act.gov.com
 A.B.N 20 419 925 579

REGISTRATION

NOT FOR CONSTRUCTION

PROJECT MANAGEMENT INITIALS		
JL	CJ	PG
DESIGNER	CHECKED	APPROVED
PROJECT DATA		
DATUM	SURVEY	

ISSUE/REVISION		
A	05.03.15	80% DD
I/R	DATE	DESCRIPTION

PROJECT NUMBER
 60314240
 SHEET TITLE
 DETAILS - SHEET 2
 ARBOUR STRUCTURE
 SHEET NUMBER
 60314240-SHT-20-NRTH-AR-9301