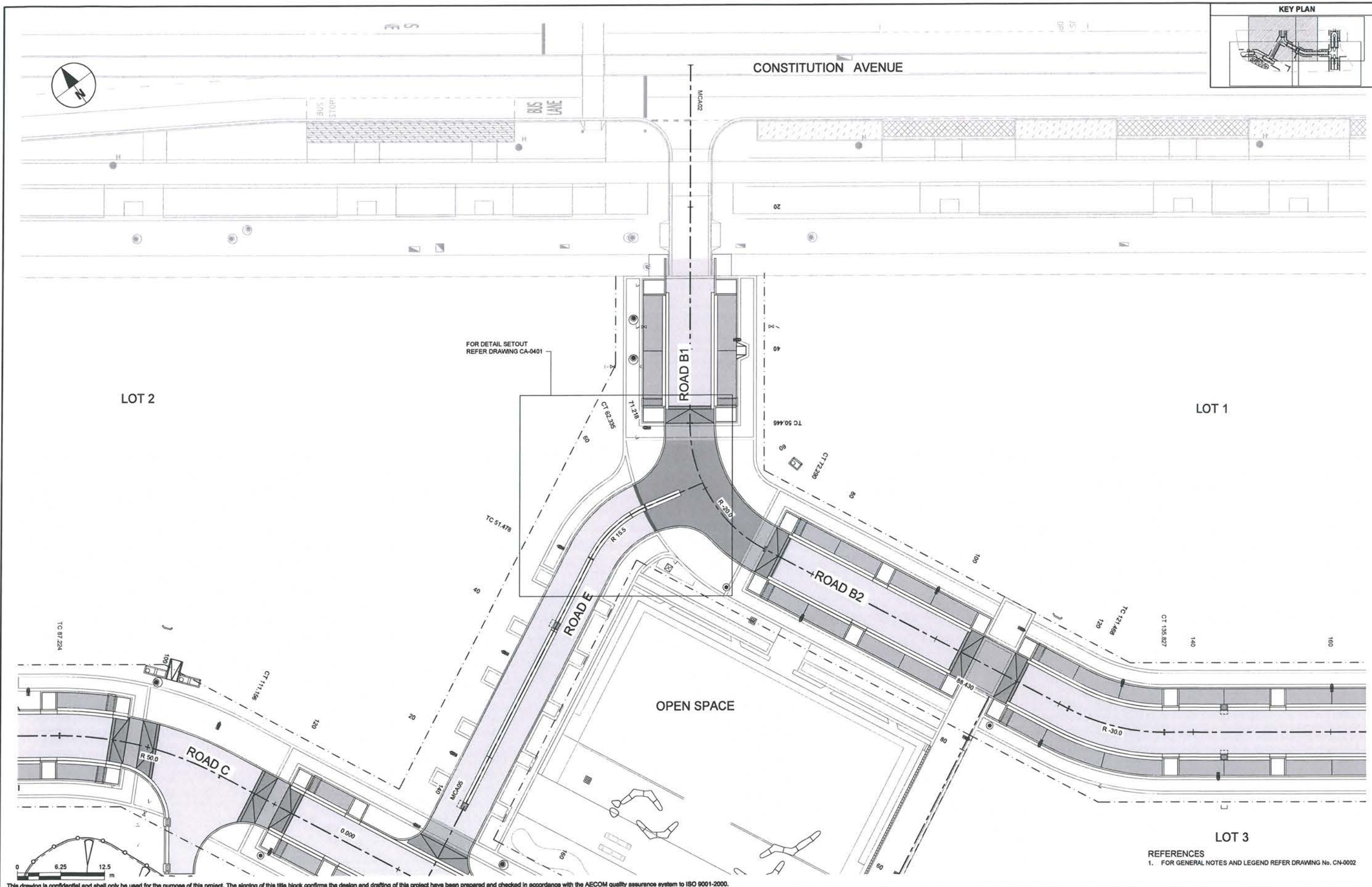


ISO A1 594mm x 841mm

Last saved by: ARNOLD/015-05-15, Last Plotter: 2015-05-15
Filename: P:\CIBR\60314240_PARKES_SECTION3_CAD\02-SHEETS\20_DR\20_CBR\60314240-SHT-20-NRTH-CA-0101.DWG



This drawing is confidential and shall only be used for the purpose of this project. The signing of this title block confirms the design and drafting of this project have been prepared and checked in accordance with the AECOM quality assurance system to ISO 9001-2000.

AECOM

CONSULTANT
AECOM Australia Pty Ltd
A.B.N 20 093 846 925
www.aecom.com

PROJECT
**PARKES SECTION 3
BLOCK 6**

CLIENT
LAND DEVELOPMENT AGENCY
Level 6 TransACT House
470 Northbourne Avenue,
Dickson ACT 2602
02 62073001 tel 02 6207 6110 fax
www.lda.act.gov.com
A.B.N 20 419 925 579

REGISTRATION
NOT FOR CONSTRUCTION

| PROJECT MANAGEMENT INITIALS | | |
|-----------------------------|----|----------|
| DESIGNER | JP | JP |
| CHECKED | | APPROVED |
| PROJECT DATA | | |
| DATUM | | SURVEY |

| ISSUE/REVISION | | |
|----------------|----------|-------------------------|
| IR | DATE | DESCRIPTION |
| B | 15.05.15 | NCA AND TAMS SUBMISSION |
| A | 02.04.15 | DRAFT FSP |

PROJECT NUMBER
60314240

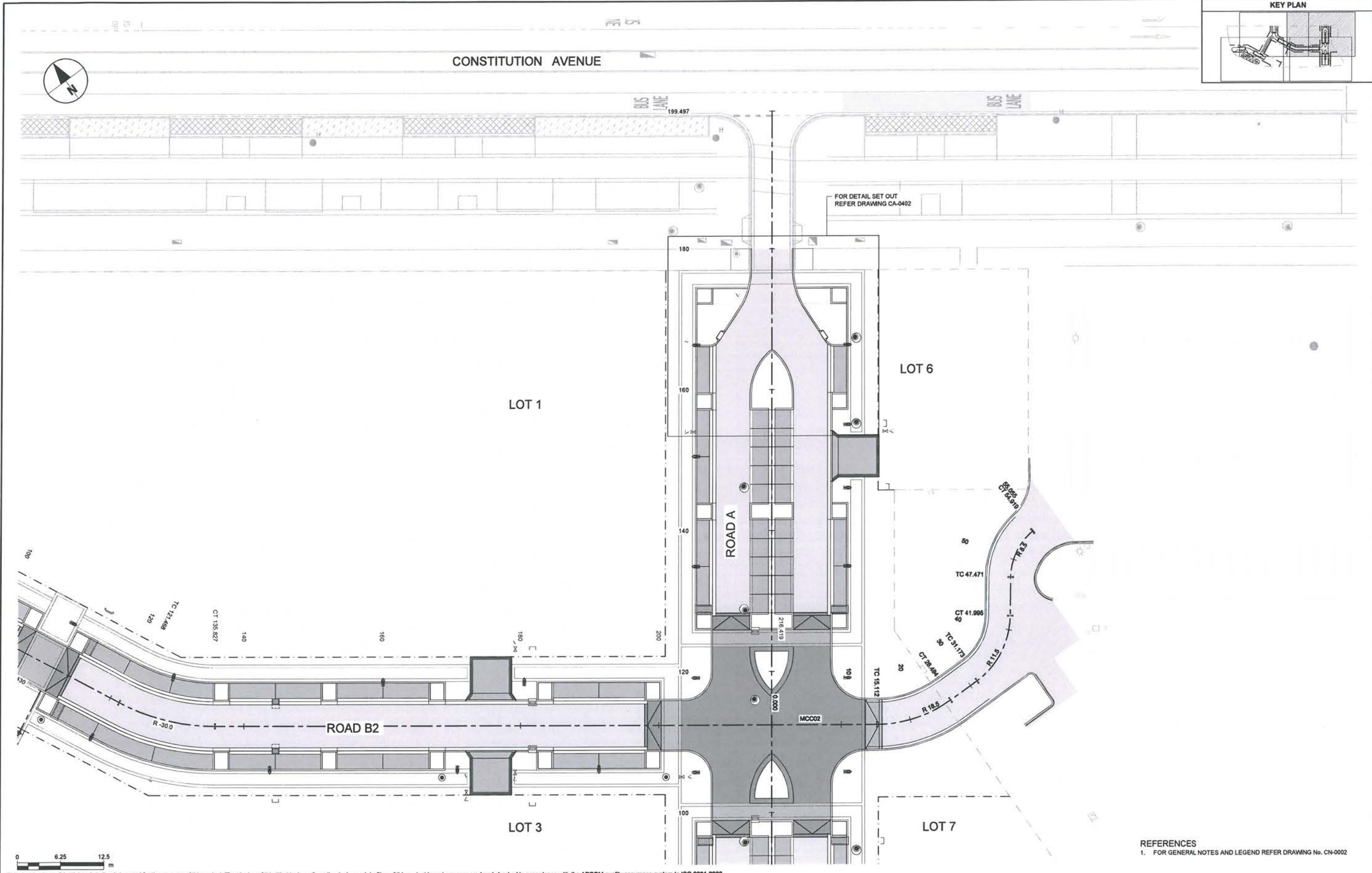
SHEET TITLE
GENERAL ARRANGEMENT PLAN
SHEET 1 OF 4

SHEET NUMBER
60314240-SHT-20-NRTH-CA-0101

REFERENCES
1. FOR GENERAL NOTES AND LEGEND REFER DRAWING No. CN-0002

ISO A1 594mm x 841mm

Last saved by: ARNOLD(2015-05-15) Last Plotted: 2015-05-18
Filename: P:\CBR\60314240_PARKES_SECTION3 CAD02-SHEET 5/20_DR020_CBR\60314240-SHT-20-NRTH-CA-0102.DWG



This drawing is confidential and shall only be used for the purpose of this project. The signing of this title block confirms the design and drafting of this project have been prepared and checked in accordance with the AECOM quality assurance system to ISO 9001-2000.

AECOM
CONSULTANT
AECOM Australia Pty Ltd
A.B.N 20 093 846 925
www.aecom.com

PROJECT
**PARKES SECTION 3
BLOCK 6**

CLIENT
LAND DEVELOPMENT AGENCY
Level 6 TransACT House
470 Northbourne Avenue,
Dickson ACT 2602
02 62073001 tel 02 6207 6110 fax
www.lda.act.gov.au
A.B.N 20 419 925 579

REGISTRATION
NOT FOR CONSTRUCTION

| PROJECT MANAGEMENT INITIALS | | |
|-----------------------------|--------|----------|
| DESIGNER | JP | JP |
| CHECKED | | APPROVED |
| PROJECT DATA | | |
| DATUM | SURVEY | |

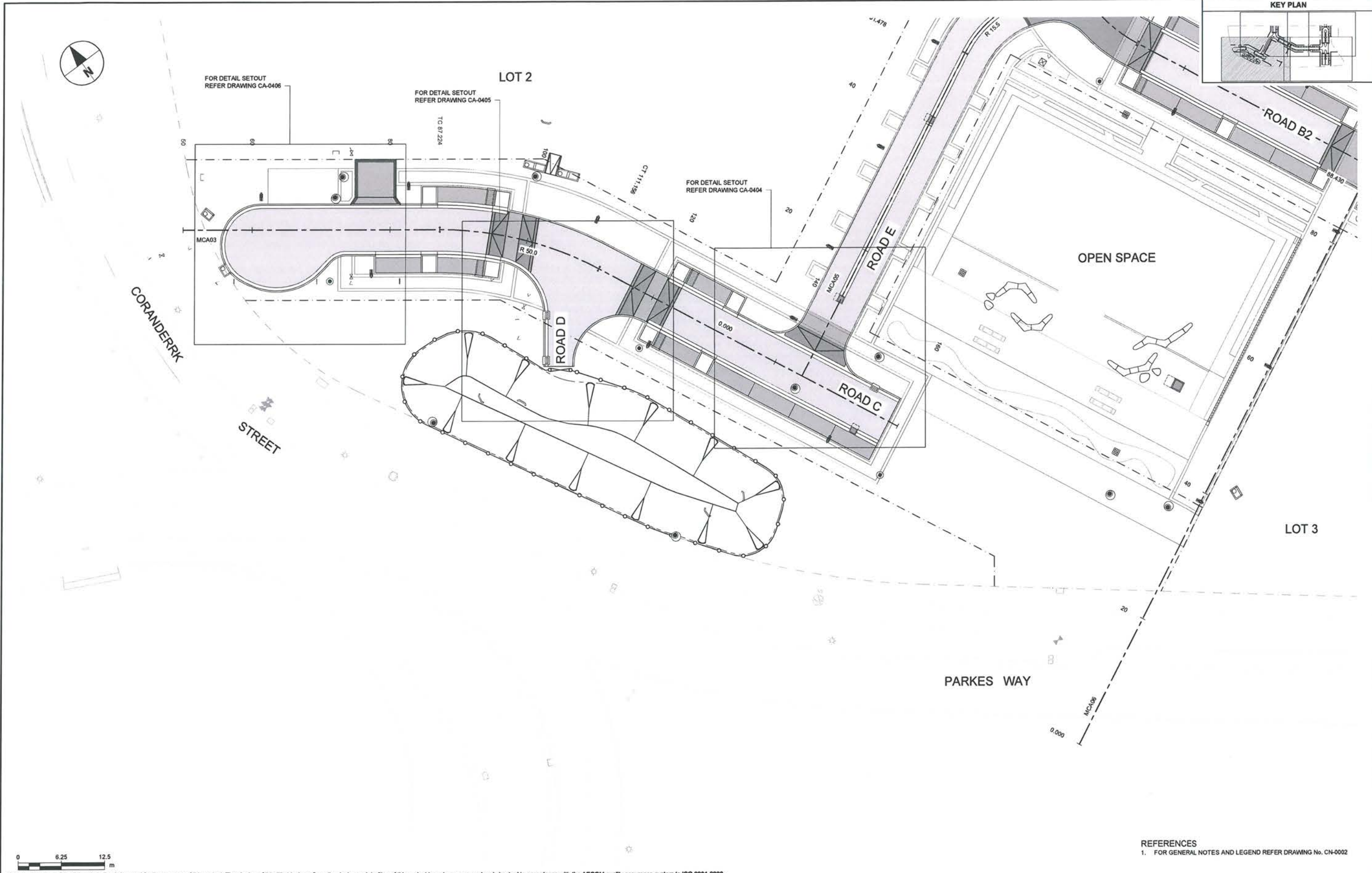
| ISSUE/REVISION | | |
|----------------|----------|-------------------------|
| IR | DATE | DESCRIPTION |
| B | 15.05.15 | NCA AND TAMS SUBMISSION |
| A | 02.04.15 | DRAFT FSP |

PROJECT NUMBER
60314240
SHEET TITLE
GENERAL ARRANGEMENT PLAN
SHEET 2 OF 4
SHEET NUMBER
60314240-SHT-20-NRTH-CA-0102

REFERENCES
1. FOR GENERAL NOTES AND LEGEND REFER DRAWING No. CN-0002

ISO A1 594mm x 841mm

Last saved by: ARNOLD/2015-05-15 | Last Plotted: 2015-05-18
Filename: P:\CIBR\80314240_PARKES_SECTION3_CAD\02-SHEET\3\20_DR020_CBR60314240-SHT-20-NRTH-CA-0103.DWG



This drawing is confidential and shall only be used for the purpose of this project. The signing of this title block confirms the design and drafting of this project have been prepared and checked in accordance with the AECOM quality assurance system to ISO 9001-2000.

REFERENCES
1. FOR GENERAL NOTES AND LEGEND REFER DRAWING No. CN-0002

AECOM
CONSULTANT
AECOM Australia Pty Ltd
A.B.N 20 093 846 925
www.aecom.com

PROJECT
**PARKES SECTION 3
BLOCK 6**

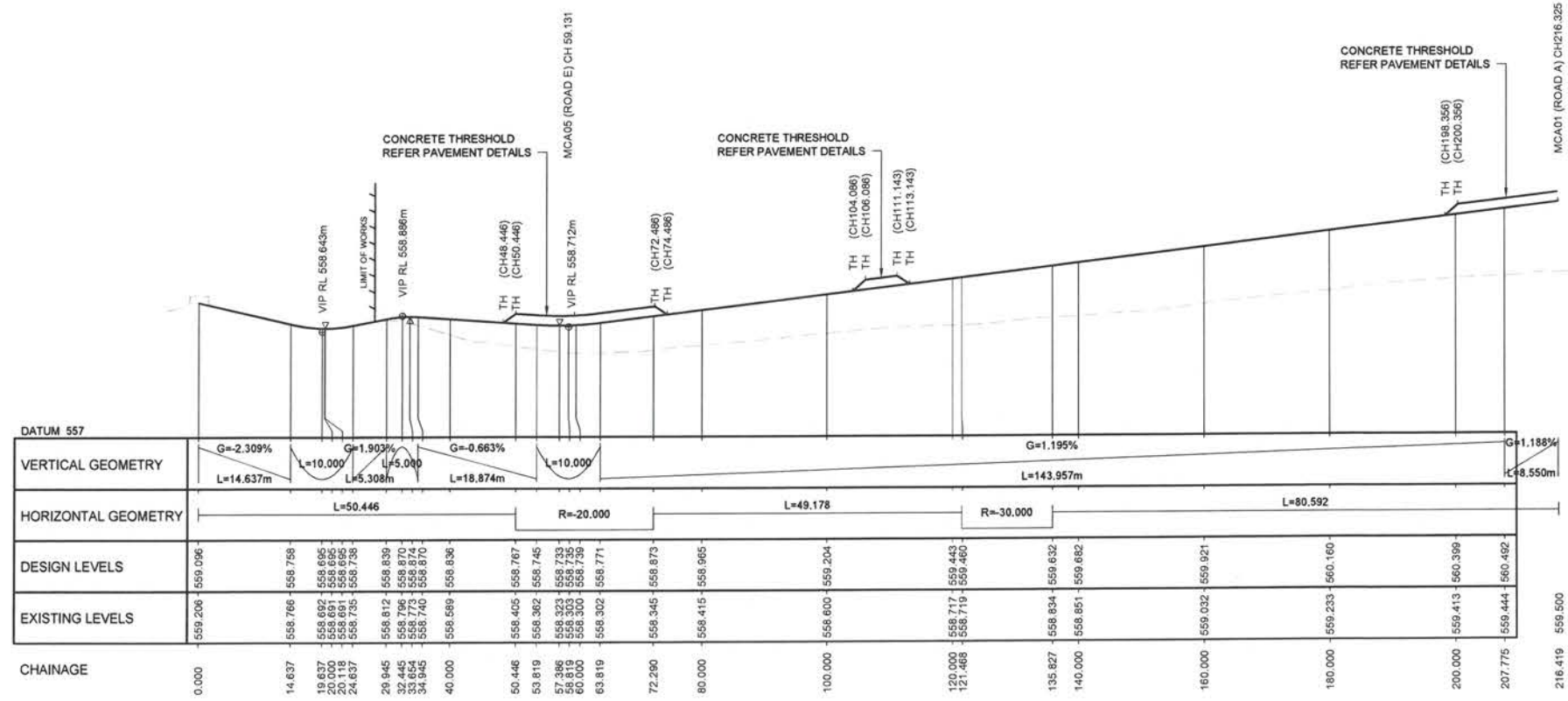
CLIENT
LAND DEVELOPMENT AGENCY
Level 6 TransACT House
470 Northbourne Avenue,
Dickson ACT 2602
02 62073001 tel 02 6207 6110 fax
www.lda.act.gov.au
A.B.N 20 419 925 579

REGISTRATION
NOT FOR CONSTRUCTION

| PROJECT MANAGEMENT INITIALS | | |
|-----------------------------|--------|----------|
| DESIGNER | JP | JP |
| CHECKED | | APPROVED |
| PROJECT DATA | | |
| DATUM | SURVEY | |

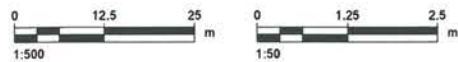
| ISSUE/REVISION | | |
|----------------|----------|-------------------------|
| B | 15.05.15 | NCA AND TAMS SUBMISSION |
| A | 02.04.15 | DRAFT FSP |
| IR | DATE | DESCRIPTION |

PROJECT NUMBER
60314240
SHEET TITLE
GENERAL ARRANGEMENT PLAN
SHEET 3 OF 4
SHEET NUMBER
60314240-SHT-20-NRTH-CA-0103



LONGITUDINAL SECTION MAIN CONTROL MCA02 (ROAD B1 AND B2)
SCALE 1:500 (H) 1:50 (V)

| MAIN CONTROL MCA02 | | | | | | | | |
|--------------------|----------|------------|------------|---------|---------------|------------|---------------|------------|
| Type | Chainage | Xcoord | Ycoord | Level | App Direction | App Radius | Dep Direction | Dep Radius |
| S | 0 | 211459.739 | 603281.497 | 559.096 | | | 233°51'00.15" | |
| TC | 50.446 | 211428.98 | 603240.763 | 558.767 | 233°51'00.15" | | 233°51'00.15" | -20 |
| CT | 72.29 | 211428.22 | 603220.064 | 558.873 | 296°25'35.83" | -20 | 296°25'35.83" | |
| TC | 121.468 | 211450.107 | 603176.025 | 559.46 | 296°25'35.83" | | 296°25'35.83" | -30 |
| CT | 135.827 | 211459.275 | 603165.152 | 559.632 | 323°50'59.80" | -30 | 323°50'59.80" | |
| E | 216.419 | 211524.351 | 603117.61 | | 323°50'59.80" | | | |



This drawing is confidential and shall only be used for the purpose of this project. The signing of this title block confirms the design and drafting of this project have been prepared and checked in accordance with the AECOM quality assurance system to ISO 9001-2000.



AECOM Australia Pty Ltd
A.B.N 20 093 846 925
www.aecom.com

PROJECT
PARKES SECTION 3
BLOCK 6

CLIENT
LAND DEVELOPMENT AGENCY
Level 6 TransACT House
470 Northbourne Avenue,
Dickson ACT 2602
02 62073001 tel 02 6207 6110 fax
www.lda.act.gov.com
A.B.N 20 419 925 579

REGISTRATION

NOT FOR CONSTRUCTION

PROJECT MANAGEMENT INITIALS

| | | |
|----------|---------|----------|
| DESIGNER | CHECKED | APPROVED |
| - | JP | JP |

PROJECT DATA

| | |
|-------|--------|
| DATUM | SURVEY |
| | |

ISSUE/REVISION

| IR | DATE | DESCRIPTION |
|-----|----------|-------------------------|
| B | 15.05.15 | NCA AND TAMS SUBMISSION |
| A | 02.04.15 | DRAFT FSP |
| I/R | | |

PROJECT NUMBER

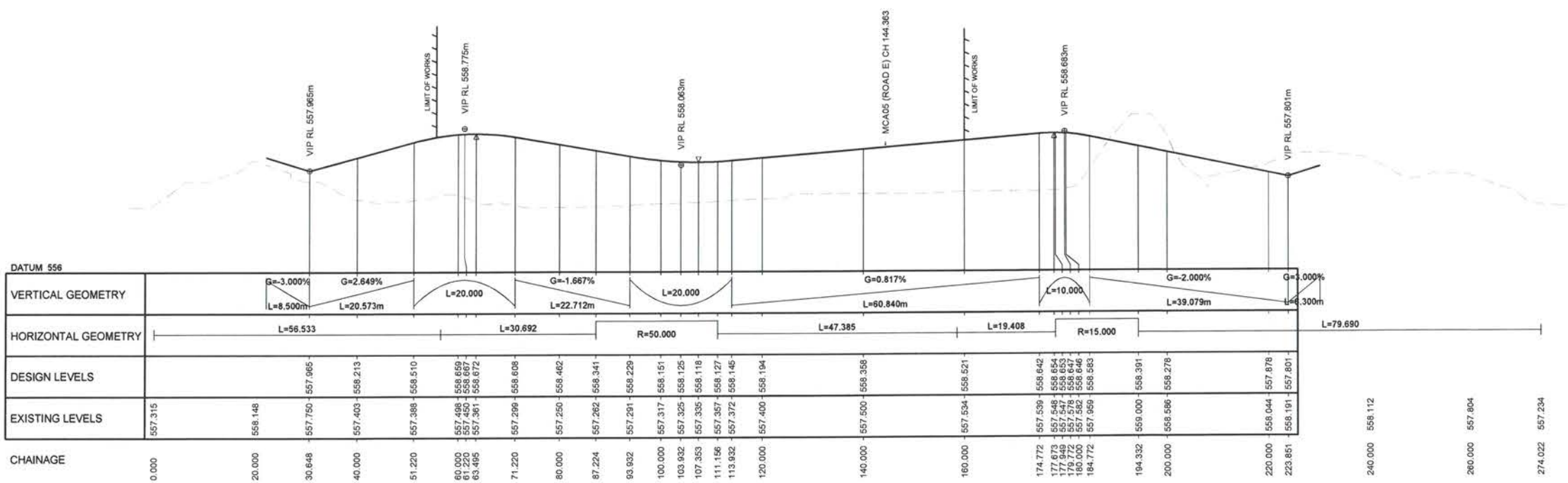
60314240

SHEET TITLE

LONGITUDINAL SECTION
HORIZONTAL SETOUT TABLE
MCA02 (ROAD B1 AND B2)

SHEET NUMBER

60314240-SHT-20-NRTH-CA-0302



| VERTICAL GEOMETRY | HORIZONTAL GEOMETRY | DESIGN LEVELS | EXISTING LEVELS | CHAINAGE |
|------------------------|---------------------|-------------------|-------------------|----------|
| G=-3.000% L=8.500m | L=56.533 | 557.750 - 557.965 | 557.315 | 0.000 |
| G=2.649% L=20.573m | L=30.692 | 557.403 - 558.213 | 558.148 | 20.000 |
| L=20.000 | R=50.000 | 557.383 - 558.510 | 557.383 - 558.510 | 51.220 |
| G=-1.667% L=22.712m | R=50.000 | 557.498 - 558.659 | 557.498 - 558.659 | 60.000 |
| L=20.000 | R=50.000 | 557.450 - 558.607 | 557.450 - 558.607 | 61.220 |
| G=0.817% L=60.840m | L=47.385 | 557.361 - 558.672 | 557.361 - 558.672 | 63.495 |
| L=10.000 | L=19.408 | 557.299 - 558.608 | 557.299 - 558.608 | 71.220 |
| G=-2.000% L=39.079m | R=15.000 | 557.250 - 558.462 | 557.250 - 558.462 | 80.000 |
| L=4.300m | L=79.690 | 557.262 - 558.341 | 557.262 - 558.341 | 87.224 |
| G=3.000% | | 557.201 - 558.229 | 557.201 - 558.229 | 93.932 |
| | | 557.317 - 558.151 | 557.317 - 558.151 | 100.000 |
| | | 557.325 - 558.125 | 557.325 - 558.125 | 103.932 |
| | | 557.335 - 558.118 | 557.335 - 558.118 | 107.353 |
| | | 557.357 - 558.127 | 557.357 - 558.127 | 111.156 |
| | | 557.372 - 558.146 | 557.372 - 558.146 | 113.932 |
| | | 557.400 - 558.194 | 557.400 - 558.194 | 120.000 |
| | | 557.500 - 558.388 | 557.500 - 558.388 | 140.000 |
| | | 557.524 - 558.521 | 557.524 - 558.521 | 160.000 |
| | | 557.539 - 558.642 | 557.539 - 558.642 | 174.772 |
| | | 557.540 - 558.654 | 557.540 - 558.654 | 177.675 |
| | | 557.547 - 558.653 | 557.547 - 558.653 | 177.949 |
| | | 557.571 - 558.647 | 557.571 - 558.647 | 179.772 |
| | | 557.582 - 558.646 | 557.582 - 558.646 | 180.000 |
| | | 557.569 - 558.583 | 557.569 - 558.583 | 184.772 |
| | | 559.000 - 558.391 | 559.000 - 558.391 | 194.332 |
| | | 558.586 - 558.278 | 558.586 - 558.278 | 200.000 |
| | | 558.044 - 557.878 | 558.044 - 557.878 | 220.000 |
| | | 558.191 - 557.801 | 558.191 - 557.801 | 223.851 |
| | | 558.112 | 558.112 | 240.000 |
| | | 557.804 | 557.804 | 260.000 |
| | | 557.234 | 557.234 | 274.022 |

LONGITUDINAL SECTION MAIN CONTROL MCA03 (ROAD C)
SCALE 1:500 (H) 1:50 (V)

| Type | Chainage | Xcoord | Ycoord | Level | App Direction | App Radius | Dep Direction | Dep Radius |
|------|----------|------------|------------|---------|---------------|------------|---------------|------------|
| S | 0 | 211260.725 | 603310.203 | | | | 323°51'00.03" | |
| TT | 56.533 | 211306.374 | 603276.854 | 558.62 | 323°51'00.03" | | 323°51'00.03" | |
| TC | 87.224 | 211331.157 | 603258.749 | 558.341 | 323°51'00.03" | | 323°51'00.03" | 50 |
| CT | 111.156 | 211346.437 | 603240.628 | 558.127 | 296°25'35.95" | 50 | 296°25'35.95" | |
| TT | 158.541 | 211367.526 | 603198.194 | 558.509 | 296°25'35.95" | | 296°25'35.95" | |
| TC | 177.949 | 211376.163 | 603180.814 | 558.653 | 296°25'35.95" | | 296°25'35.95" | 15 |
| CT | 194.332 | 211374.843 | 603165.289 | 558.391 | 233°50'59.96" | 15 | 233°50'59.96" | |
| E | 274.022 | 211327.834 | 603100.942 | | 233°50'59.96" | | | |



This drawing is confidential and shall only be used for the purpose of this project. The signing of this title block confirms the design and drafting of this project have been prepared and checked in accordance with the AECOM quality assurance system to ISO 9001-2000.

NOT FOR CONSTRUCTION

AECOM
CONSULTANT
AECOM Australia Pty Ltd
A.B.N 20 093 846 925
www.aecom.com

PROJECT
**PARKES SECTION 3
BLOCK 6**

CLIENT
LAND DEVELOPMENT AGENCY
Level 6 TransACT House
470 Northbourne Avenue,
Dickson ACT 2602
02 62073001 tel 02 6207 6110 fax
www.lda.act.gov.com
A.B.N 20 419 925 579

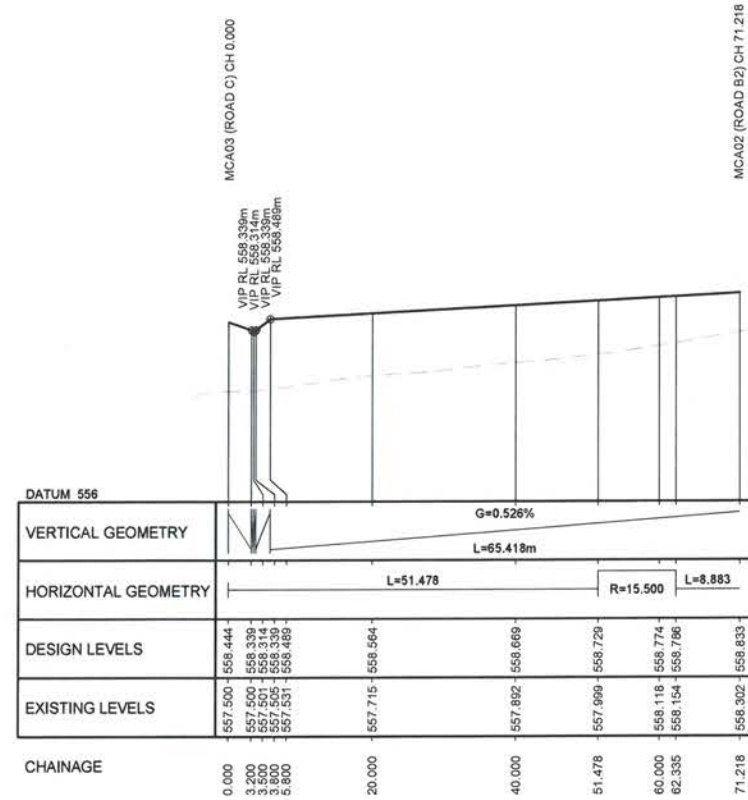
REGISTRATION

| PROJECT MANAGEMENT INITIALS | | |
|-----------------------------|---------|----------|
| DESIGNER | CHECKED | APPROVED |
| | JP | JP |

| PROJECT DATA | |
|--------------|--------|
| DATUM | SURVEY |

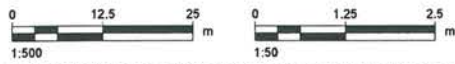
| ISSUE/REVISION | |
|----------------|----------------------------------|
| B | 15.05.15 NCA AND TAMS SUBMISSION |
| A | 02.04.15 DRAFT FSP |
| I/R | DATE DESCRIPTION |

PROJECT NUMBER
60314240
SHEET TITLE
LONGITUDINAL SECTION
HORIZONTAL SETOUT TABLE
MCA03 (ROAD C)
SHEET NUMBER
60314240-SHT-20-NRTH-CA-0303



LONGITUDINAL SECTION MAIN CONTROL MCA05 (ROAD E)
 SCALE 1:500 (H) 1:50 (V)

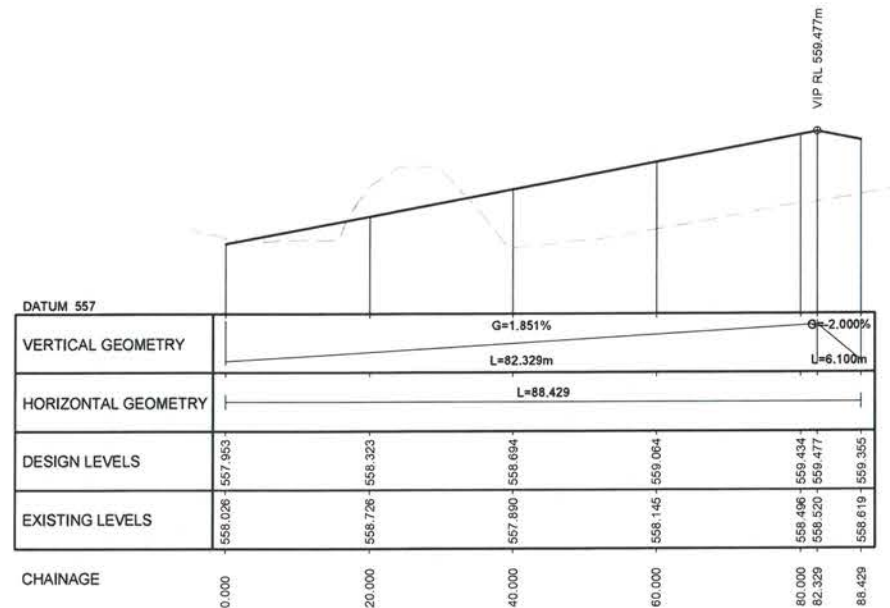
| MAIN CONTROL MCA05 | | | | | | | | |
|--------------------|----------|------------|------------|---------|---------------|------------|---------------|------------|
| Type | Chainage | Xcoord | Ycoord | Level | App Direction | App Radius | Dep Direction | Dep Radius |
| S | 0 | 211361.216 | 603210.89 | 558.444 | | | 26°25'35.87" | |
| TC | 51.478 | 211407.315 | 603233.801 | 558.729 | 26°25'35.87" | | 26°25'35.87" | 15.5 |
| CT | 62.335 | 211417.886 | 603234.979 | 558.786 | 346°17'35.83" | 15.5 | 346°17'35.83" | |
| E | 71.218 | 211426.516 | 603232.874 | 558.833 | 346°17'35.83" | | | |



This drawing is confidential and shall only be used for the purpose of this project. The signing of this title block confirms the design and drafting of this project have been prepared and checked in accordance with the AECOM quality assurance system to ISO 9001-2000.

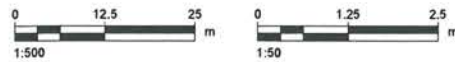
| PROJECT MANAGEMENT INITIALS | | |
|-----------------------------|----|----------|
| DESIGNER | JP | JP |
| CHECKED | | APPROVED |
| PROJECT DATA | | |
| DATUM | | SURVEY |

| ISSUE/REVISION | | |
|----------------|----------|-------------------------|
| IR | DATE | DESCRIPTION |
| B | 15.05.15 | NCA AND TAMS SUBMISSION |
| A | 02.04.15 | DRAFT FSP |



LONGITUDINAL SECTION MAIN CONTROL MCA06 (PARK PATHWAY)
 SCALE 1:500 (H) 1:50 (V)

| MAIN CONTROL MCA06 | | | | | | |
|--------------------|----------|------------|------------|---------|---------------|---------------|
| Type | Chainage | Xcoord | Ycoord | Level | App Direction | Dep Direction |
| S | 0 | 211363.01 | 603144.267 | 557.953 | | 26°25'40.36" |
| E | 88.429 | 211442.198 | 603183.625 | 559.355 | 26°25'40.36" | |



This drawing is confidential and shall only be used for the purpose of this project. The signing of this title block confirms the design and drafting of this project have been prepared and checked in accordance with the AECOM quality assurance system to ISO 9001-2000.



CONSULTANT
 AECOM Australia Pty Ltd
 A.B.N 20 093 846 925
 www.aecom.com

PROJECT
**PARKES SECTION 3
 BLOCK 6**

CLIENT
LAND DEVELOPMENT AGENCY
 Level 6 TransACT House
 470 Northbourne Avenue,
 Dickson ACT 2602
 02 62073001 tel 02 6207 6110 fax
 www.lda.act.gov.com
 A.B.N 20 419 925 579

REGISTRATION

NOT FOR CONSTRUCTION

| PROJECT MANAGEMENT INITIALS | | |
|-----------------------------|---------|----------|
| DESIGNER | CHECKED | APPROVED |
| | | |
| PROJECT DATA | | |
| DATUM | SURVEY | |
| | | |

| ISSUE/REVISION | | |
|----------------|----------|-------------------------|
| | | |
| | | |
| B | 15.05.15 | NCA AND TAMS SUBMISSION |
| A | 02.04.15 | DRAFT FSP |
| IR | DATE | DESCRIPTION |

PROJECT NUMBER
 60314240
 SHEET TITLE
 LONGITUDINAL SECTION
 HORIZONTAL SETOUT TABLE
 MCA06 (SHARED ZONE)
 SHEET NUMBER