

CITY TO THE LAKE, WEST BASIN FORESHORE

LIST OF DRAWINGS

LANDSCAPE DRAWINGS

CttL-S1AW2-LLU-DRG-5001	Works Package 2 - Works Approval - Landscape - Planting Plans - Cover Sheet
CttL-S1AW2-LLU-DRG-5101	Works Package 2 - Works Approval- Landscape - Planting Plans - Sheet 1 of 9
CttL-S1AW2-LLU-DRG-5102	Works Package 2 - Works Approval- Landscape - Planting Plans - Sheet 2 of 9
CttL-S1AW2-LLU-DRG-5103	Works Package 2 - Works Approval- Landscape - Planting Plans - Sheet 3 of 9
CttL-S1AW2-LLU-DRG-5104	Works Package 2 - Works Approval- Landscape - Planting Plans - Sheet 4 of 9
CttL-S1AW2-LLU-DRG-5105	Works Package 2 - Works Approval - Landscape - Planting Plans - Sheet 5 of 9
CttL-S1AW2-LLU-DRG-5106	Works Package 2 - Works Approval - Landscape - Planting Plans - Sheet 6 of 9
CttL-S1AW2-LLU-DRG-5107	Works Package 2 - Works Approval - Landscape - Planting Plans - Sheet 7 of 9
CttL-S1AW2-LLU-DRG-5108	Works Package 2 - Works Approval - Landscape - Planting Plans - Sheet 8 of 9
CttL-S1AW2-LLU-DRG-5109	Works Package 2 - Works Approval - Landscape - Planting Plans - Sheet 9 of 9
CttL-S1AW2-LLU-DRG-5201	Works Package 2 - Works Approval - Softscape Details - Sheet 1 of 4
CttL-S1AW2-LLU-DRG-5202	Works Package 2 - Works Approval - Softscape Details - Sheet 2 of 4
CttL-S1AW2-LLU-DRG-5203	Works Package 2 - Works Approval - Softscape Details - Sheet 3 of 4
CttL-S1AW2-LLU-DRG-5204	Works Package 2 - Works Approval - Softscape Details - Sheet 4 of 4
CttL-S1AW2-LLU-DRG-6001	Works Package 2 - Works Approval - Irrigation - Cover
CttL-S1AW2-LLU-DRG-6101	Works Package 2 - Works Approval - Irrigation - General Arrangement Plan - Sheet 1 of 9
CttL-S1AW2-LLU-DRG-6102	Works Package 2 - Works Approval - Irrigation - General Arrangement Plan - Sheet 2 of 9
CttL-S1AW2-LLU-DRG-6103	Works Package 2 - Works Approval - Irrigation - General Arrangement Plan - Sheet 3 of 9
CttL-S1AW2-LLU-DRG-6104	Works Package 2 - Works Approval - Irrigation - General Arrangement Plan - Sheet 4 of 9
CttL-S1AW2-LLU-DRG-6105	Works Package 2 - Works Approval - Irrigation - General Arrangement Plan - Sheet 5 of 9
CttL-S1AW2-LLU-DRG-6106	Works Package 2 - Works Approval - Irrigation - General Arrangement Plan - Sheet 6 of 9
CttL-S1AW2-LLU-DRG-6107	Works Package 2 - Works Approval - Irrigation - General Arrangement Plan - Sheet 7 of 9
CttL-S1AW2-LLU-DRG-6108	Works Package 2 - Works Approval - Irrigation - General Arrangement Plan - Sheet 8 of 9
CttL-S1AW2-LLU-DRG-6109	Works Package 2 - Works Approval - Irrigation - General Arrangement Plan - Sheet 9 of 9
CttL-S1AW2-LLU-DRG-6201	Works Package 2 - Irrigation - Details - Sheet 1 of 1

TREE SCHEDULE

Trees		
Plant No.	Botanical Name	Common Name
AV	<i>Allocasuarina verticillata</i>	Drooping She-oak
CC	<i>Casuarina cunninghamia</i>	Swamp She-oak
CCA	<i>Cornus capitata</i>	Flowering Dogwood
EB	<i>Eucalyptus blakelyi</i>	Blakelys Red Gum
EC	<i>Eucalyptus cinerea</i>	Argyle Apple
ECA	<i>Eucalyptus camaldulensis</i>	River Red Gum
EMA	<i>Eucalyptus macroryncha</i>	Red Gum
EM	<i>Eucalyptus mannifera</i>	Brittle Gum
EML	<i>Eucalyptus mannifera</i> "Little Spotty"	Dwarf Brittle Gum
EME	<i>Eucalyptus melliodora</i>	Yellow Box
EMS	<i>Eucalyptus moorei</i> 'Sally'	Little Sally
EPL	<i>Eucalyptus pauciflora</i> "Little Snowman"	Dwarf Snow Gum
ER	<i>Eucalyptus rossii</i>	Scribbly Gum
EV	<i>Eucalyptus viminalis</i>	Ribbon Gum
GT	<i>Acer carpiniifolium</i>	Hornbeam Maple
KP	<i>Koelreuteria paniculata</i>	Golden Rain Tree
ME	<i>Melaleuca ericifolia</i>	Swamp Paperbark
MG	<i>Metasequoia glyptostroboides</i>	Dawn Redwood
MI	<i>Malus loensis</i> 'Plena'	Betchel Crab Apple
ML	<i>Melaleuca linarifolia</i>	Snow in Summer
MP	<i>Malus purpurea</i>	Purple Crabapple
NS	<i>Nyssa sylvatica</i>	Black Tupelo
PC	<i>Prunus cerasifera</i>	Cherry Plum
PCC	<i>Pyrus calleryana</i> 'Chanticleer'	Columnar Pear
PCH	<i>Pistacia chinensis</i>	Chinese Pistache
PS	<i>Populus simonii</i>	Chinese Poplar
QC	<i>Quercus coccinea</i>	Scarlet Oak
QR	<i>Quercus robur</i>	English Oak
SJ	<i>Sophora japonica</i>	Japanese Pagoda Tree
SS	<i>Sapium sebiferum</i>	Chinese Tallow Tree
TC	<i>Tillia cordata</i> 'Winter Orange'	Linden
TD	<i>Taxodium distichum</i>	Bald Cypress
TL	<i>Tristaniopsis laurina</i>	Water Gum
UMV	<i>Ulmus minor variegata</i>	Variegated Smooth Leaved Elm
UP	<i>Ulmus parvifolia</i>	Chinese Elm
ZS	<i>Zelkova serrata</i> 'Green Vase'	Zelkova

ex Existing Trees

GRASSLANDS - PLANTING SCHEDULE

G1 - Grassland Mix 1 - (Part Shade)

Plant No.	Botanical Name	Common Name
G1	<i>Themeda triandra</i>	Kangaroo Grass
	<i>Poa sieberiana</i>	Tussock Grass
	<i>Poa labillardieri</i>	Common Tussock Grass
	<i>Stylidium graminifolium</i>	Grass Trigger Plant
	<i>Bulbina glauca</i>	Rock Lilly
	<i>Bulbine bulbosa</i>	Bulbine Lilly

G2 - Grassland Mix 2 - Sunny Open Areas

Plant No.	Botanical Name	Common Name
G2	<i>Austrodanthonia caespitosa</i>	Wallaby Grass
	<i>Austrostipa stipoides</i>	Prickly Spear Grass
	<i>Themeda triandra</i>	Kangaroo Grass
	<i>Chrysocephalum apiculatum</i>	Common Everlasting
	<i>Helipterum albicans</i>	Hoary Sunray
	<i>Xerochrysum viscosum</i>	Sticky Everlasting
	<i>Rutidosis leptorhynchoides</i>	Button Wrinklewort
	<i>Triptilodiscus pygmaeus</i>	Common Sunray
	<i>Wahlenbergia stricta</i>	Native Bluebell

G3 - Grassland Mix 3 - Sunny Open Areas

Plant No.	Botanical Name	Common Name
G3	<i>Microlaena stipoides</i> 'Griffin'	Griffin Weeping Grass
	<i>Brachyscome multifida</i> 'Break O Day'	Mauve Cut-leaved Daisy
	<i>Brachyscome multifida</i> 'White Delight'	White Cut-leaved Daisy
	<i>Glycine tabacina</i>	Variable Glycine
	<i>Wahlenburgia stricta</i>	Australian Bluebell

WETLAND - PLANTING SCHEDULE

G4 - Wetland Mix 1 - Periodic Inundation

Plant No.	Botanical Name	Common Name
G4	<i>Carex appressa</i>	Tall Sedge
	<i>Carex inversa</i>	Lawn Sedge
	<i>Cyperus gunnii</i>	Flecked Flat Sedge
	<i>Eleocharis acuta</i>	Common Spike Rush
	<i>Juncus usitatus</i>	Common Rush
	<i>Paspalum distichum</i>	Water Couch
	<i>Poa sieberiana</i>	Grey Tussock Grass
	<i>Pratia pedunculata</i>	Blue Star Creeper

G4 (A) - Wetland mix - Bioretention

Plant No.	Botanical Name	Common Name
G4 (A)	<i>Carex appressa</i>	Tall Sedge
	<i>Carex inversa</i>	Lawn Sedge
	<i>Cyperus gunnii</i>	Flecked Flat Sedge
	<i>Eleocharis acuta</i>	Common Spike Rush
	<i>Juncus usitatus</i>	Common Rush
	<i>Paspalum distichum</i>	Water Couch
	<i>Poa sieberiana</i>	Grey Tussock Grass
	<i>Pratia pedunculata</i>	Blue Star Creeper

G5 - Wetland Mix 2 - Permanent Water

Plant No.	Botanical Name	Common Name
G5	<i>Baumea articulata</i>	Jointed Twig Rush
	<i>Bolboschoenus medianus</i>	Marsh Club Rush
	<i>Bolboschoenus caldwellii</i>	Salt Club Sedge
	<i>Eleocharis sphacelata</i>	Tall Spike Rush
	<i>Juncus usitatus</i>	Common Rush
	<i>Gahnia sieberiana</i>	Red Fruit Saw Edge
	<i>Gahnia melanocarpa</i>	Black Fruit Saw Edge
	<i>Phragmites australis</i>	Common Reed
	<i>Ranunculus spp</i>	Water Buttercup
	<i>Schoenoplectus validus</i>	River Club Rush

SHRUBS & GROUNDCOVERS - PLANTING SCHEDULE

G6 - Shrubs and Groundcovers - Streetscape

Plant No.	Botanical Name	Common Name
G6	<i>Hedera canariensis</i>	Canary Island Ivy
	<i>Juniperus conferta</i> 'Blue Pacific'	Pacific Blue Shore Juniper
	<i>Myoporum parvifolium</i> 'Chunky Boobialla'	Creeping Boobialla

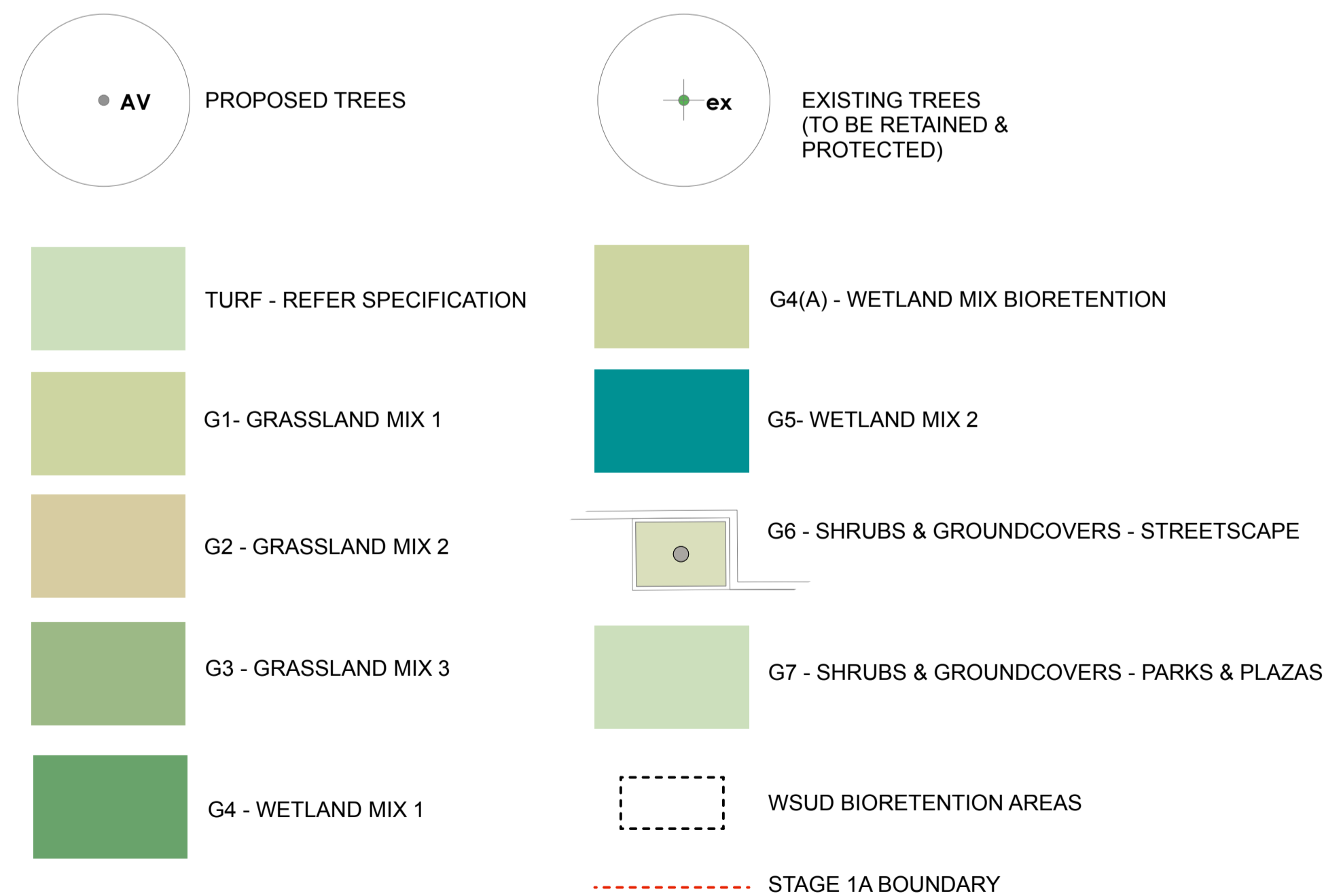
G7 - Shrubs and Groundcovers - Parks & Plazas

Plant No.	Botanical Name	Common Name
G7	Shrubs	
	<i>Coleonema pulchellum</i> 'Compactum'	Compact Pink Breath of Heaven
	<i>Convolvulus cneorum</i>	Silverbush
	<i>Coprosma</i> 'Karo Red'	Red Mirror Bush
	<i>Correa alba</i>	White Native Fuchsia
	<i>Correa</i> 'Dusky Bells'	Dusky Bells Native Fuchsia
	<i>Correa reflexa</i> var. <i>reflexa</i>	Native Fuchsia
	<i>Escallonia</i> 'Pink Pixie'	Pink Pixie Escallonia
	<i>Hebe</i> 'Wiri Cloud'	Wiri Cloud Hebe
	<i>Prostanthera ovalifolia</i> 'Compact'	Dwarf Mint Bush
	<i>Pimelea linifolia</i>	Riceflower
	<i>Pittosporum tobira</i> 'Miss Moffett'	Miss Muffet Pittosporum
	<i>Rosmarinus officinalis</i>	Rosemary
	<i>Thryptomene saxicola</i>	Rock Thryptomene
	<i>Westringia fruticosa</i> 'Mundi'	Dwarf Coastal Rosemary
	Groundcovers	
	<i>Chrysocephalum apiculatum</i>	Common Everlasting
	<i>Convolvulus sabatius</i>	Blue Rock Bindweed
	<i>Grevillea lanigera</i> 'Mt Tamboritha'	Woolly Grevillea
	<i>Myoporum parvifolium</i> 'Chunky Boobialla'	Creeping Boobialla
	<i>Myoporum parvifolium</i> 'Pink Form'	Pink Creeping Boobialla

SOIL TYPES

Soil Type	Soil Name
ST1	Display bed soil
ST2	Subsoil
ST3	Advanced tree & vault subsoils
ST4	Raingardens & Stormwater filtration soils
ST5	Wetland soils
ST6	Active high-traffic turf

LEGEND



Issue	Description	Date	By	Chkd	Apptd
B	Final Issue	24/07/15	SS	JK	JI
A	Issue for Comment	05/06/15	SS	JK	JI



ARUP jila hill thalis
ARCHITECTURE + URBAN PROJECTS PTY LTD

calibre CONSULTING

tait | waddington
ARCHITECTURE, PLANNING & THE URBAN LANDSCAPE

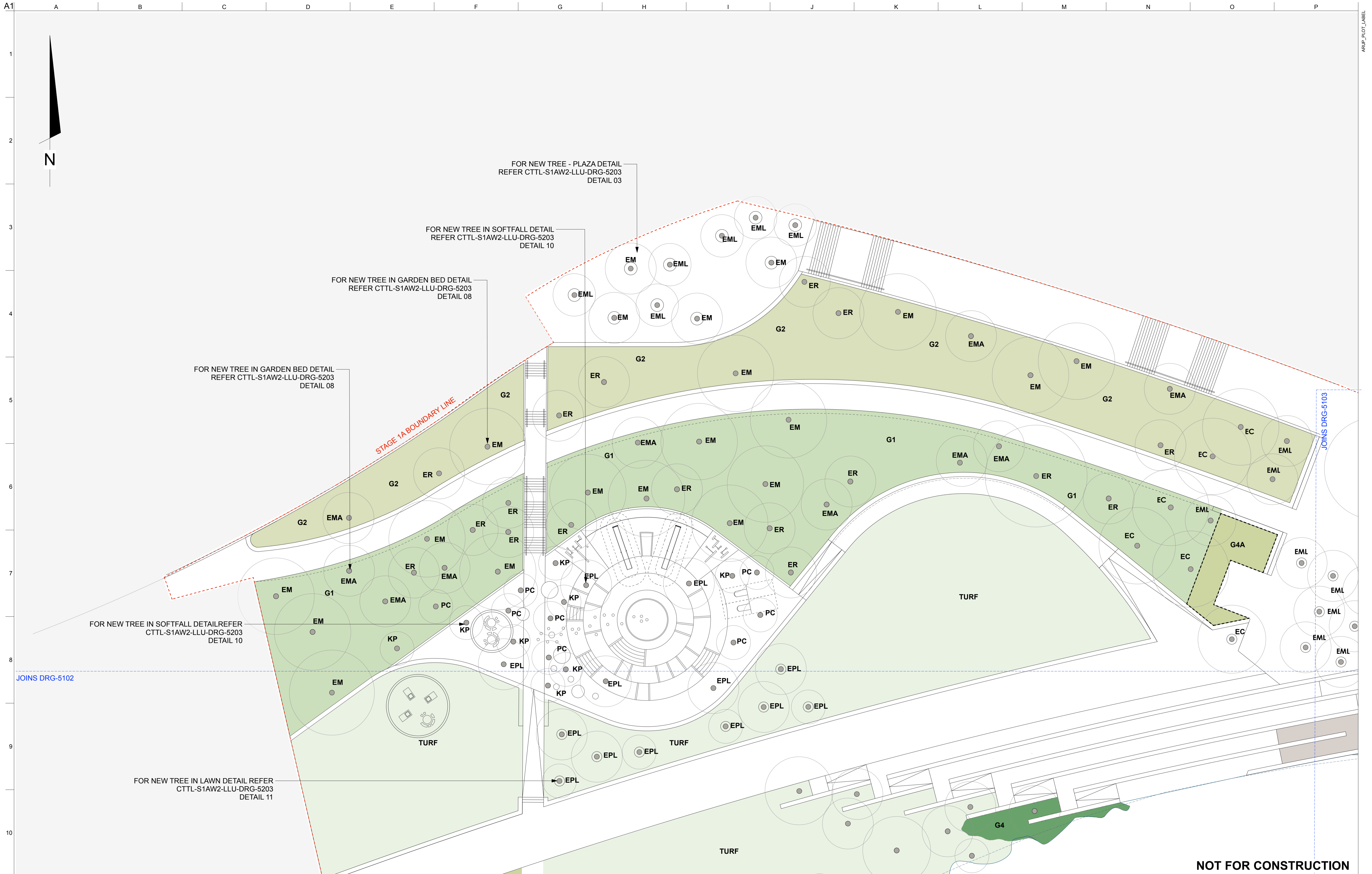
Client
CITY TO THE LAKE

ACT Government
Land Development Agency
CANBERRA FIRST

Job Title
City to the Lake
West Basin Foreshore

Drawing Title
Works Package 2 - Works Approval
Landscape Planting Plan
Legend

Scale at A1	1:200m
Discipline	Landscape Architecture
Job No	240073
Drawing Status	Works Approval
Drawing No	CTTL-S1AW2-LLU-DRG-5001
Issue	B



NOT FOR CONSTRUCTION

Issue	Description	Date	By	Chkd	Appd
B	Final Issue	24/07/15	SS	JK	JI
A	Issue for Comment	05/06/15	SS	JK	JI



ARUP jila hill thalis
ARCHITECTURE + URBAN PROJECTS PTY LTD

calibre
CONSULTING

tait | waddington
ARCHITECTURE, PLANNING & THE URBAN LANDSCAPE

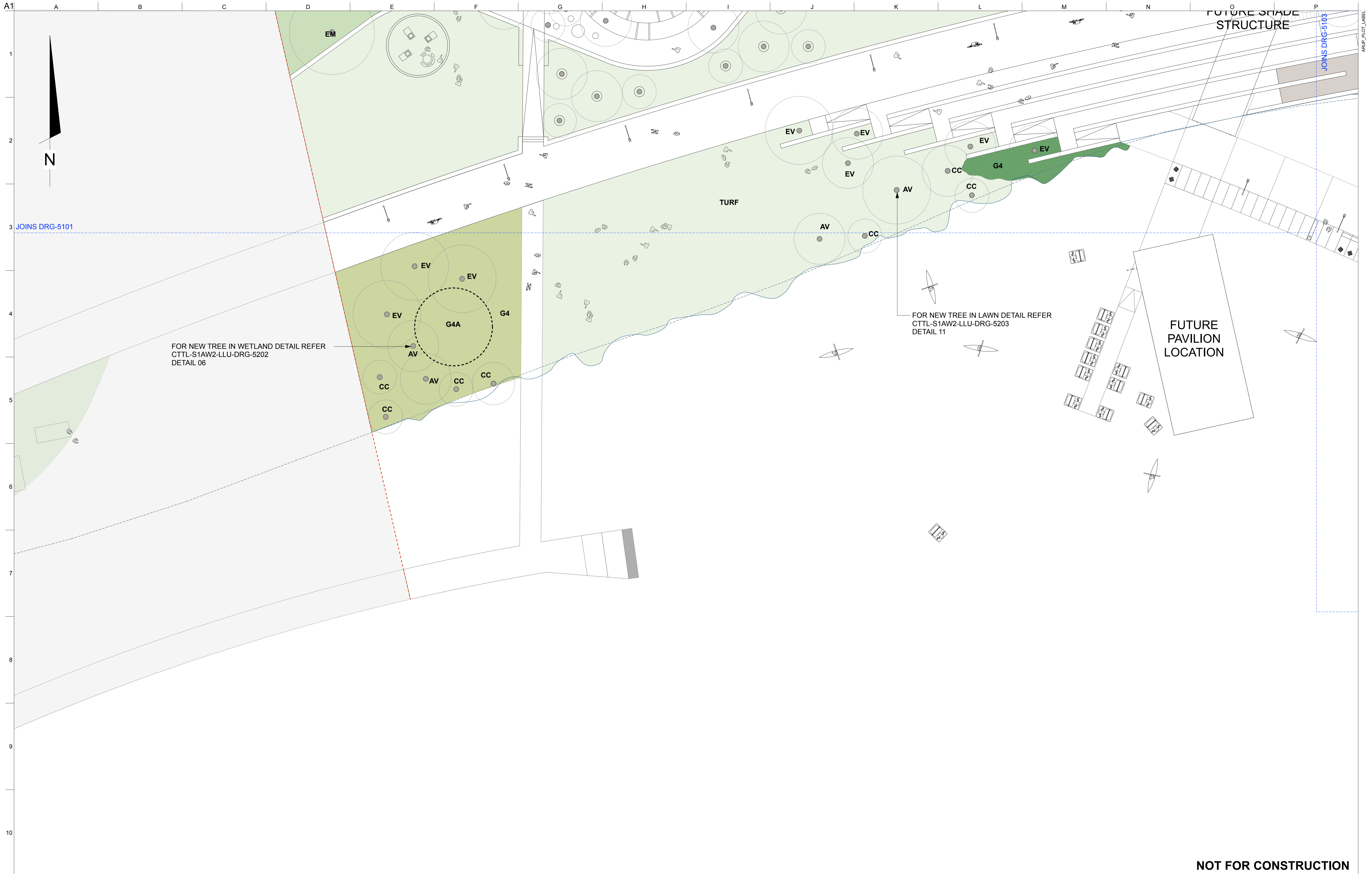
Client
CITY TO THE LAKE

ACT Government
Land Development Agency
CANNERRA FIRST

Job Title
City to the Lake
West Basin Foreshore

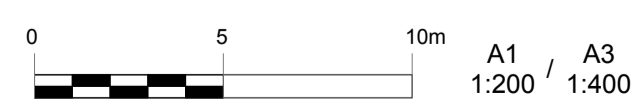
Drawing Title
Works Package 2 - Works Approval
Landscape Planting Plan
Sheet 1 of 9

Scale at A1	1:200m
Discipline	Landscape Architecture
Job No	240073
Drawing Status	Works Approval
Drawing No	CTTL-S1AW2-LLU-DRG-5101
Issue	B



NOT FOR CONSTRUCTION

Issue	Description	Date	By	Chkd	Appd
B	Final Issue	24/07/15	SS	JK	JI
A	Issue for Comment	05/06/15	SS	JK	JI



ARUP jila hill thalis
ARCHITECTURE + URBAN PROJECTS PTY LTD

calibre
CONSULTING

tait | waddington
ARCHITECTURE, PLANNING & THE URBAN LANDSCAPE

Client

CITY TO THE LAKE

ACT Government

Land Development Agency
CANBERRA FIRST

Job Title
City to the Lake
West Basin Foreshore

Drawing Title
Works Package 2 - Works Approval
Landscape Planting Plan
Sheet 2 of 9

Scale at A1 1:200m	
Discipline	Landscape Architecture
Job No	240073
Drawing Status	Works Approval
Drawing No	CTTL-S1AW2-LLU-DRG-5102
Issue	B



Issue	Description	Date	By	Chkd	Appd
B	Final Issue	24/07/15	SS	JK	JI
A	Issue for Comment	05/06/15	SS	JK	JI



ARUP jila hill thalis
ARCHITECTURE + URBAN PROJECTS PTY LTD

calibre
CONSULTING

tait | waddington
ARCHITECTURE, PLANNING & THE URBAN LANDSCAPE

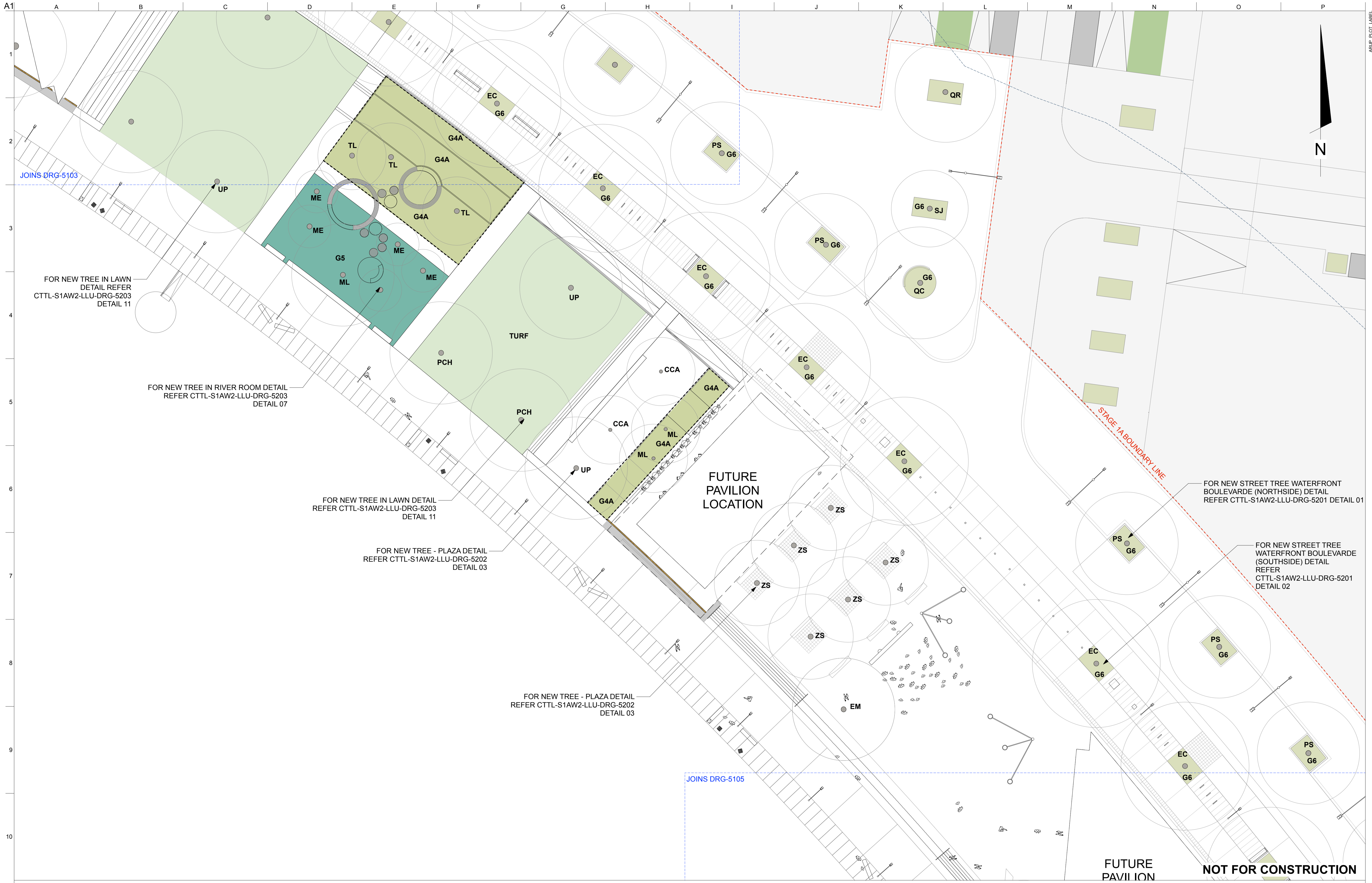
Client
CITY TO THE LAKE

ACT Government
Land Development Agency
CANNBERA FIRST

Job Title
City to the Lake
West Basin Foreshore

Drawing Title
Works Package 2 - Works Approval
Landscape Planting Plan
Sheet 3 of 9

Scale at A1	1:200m
Discipline	Landscape Architecture
Job No	240073
Drawing Status	Works Approval
Drawing No	CTTL-S1AW2-LLU-DRG-5103
Issue	B



FOR NEW TREE IN LAWN
DETAIL REFER
CTTL-S1AW2-LLU-DRG-5203
DETAIL 11

FOR NEW TREE IN RIVER ROOM DETAIL
REFER CTTL-S1AW2-LLU-DRG-5203
DETAIL 07

FOR NEW TREE IN LAWN DETAIL
REFER CTTL-S1AW2-LLU-DRG-5203
DETAIL 11

FOR NEW TREE - PLAZA DETAIL
REFER CTTL-S1AW2-LLU-DRG-5202
DETAIL 03

FOR NEW TREE - PLAZA DETAIL
REFER CTTL-S1AW2-LLU-DRG-5202
DETAIL 03

FOR NEW STREET TREE WATERFRONT
BOULEVARDE (NORTHSIDE) DETAIL
REFER CTTL-S1AW2-LLU-DRG-5201
DETAIL 01

FOR NEW STREET TREE
WATERFRONT BOULEVARDE
(SOUTHSIDE) DETAIL
REFER
CTTL-S1AW2-LLU-DRG-5201
DETAIL 02

Issue	Description	Date	By	Chkd	Apptd
B	Final Issue	24/07/15	SS	JK	JI
A	Issue for Comment	05/06/15	SS	JK	JI



ARUP jila thalis
ARCHITECTURE + URBAN PROJECTS PTY LTD

calibre
CONSULTING

tait | waddington
ARCHITECTURE, PLANNING & THE URBAN LANDSCAPE

Client

CITY TO THE LAKE

ACT Government

Land Development Agency
CANNBERA FIRST

Job Title
City to the Lake
West Basin Foreshore

Drawing Title
Works Package 2 - Works Approval
Landscape Planting Plan
Sheet 4 of 9

Scale at A1 1:200m

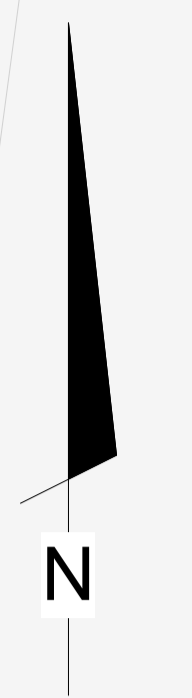
Discipline Landscape Architecture

Job No 240073

Drawing Status Works Approval

Drawing No CTTL-S1AW2-LLU-DRG-5104

Issue B



Issue	Description	Date	By	Chkd	Appd
B	Final Issue	24/07/15	SS	JK	JI
A	Issue for Comment	05/06/15	SS	JK	JI



ARUP jila hill thalis
ARCHITECTURE + URBAN PROJECTS PTY LTD

calibre
CONSULTING

tait | waddington
ARCHITECTURE, PLANNING & THE URBAN LANDSCAPE

Client
CITY TO THE LAKE

ACT Government
Land Development Agency
CANNBERA FIRST

Job Title
City to the Lake
West Basin Foreshore

Drawing Title
Works Package 2 - Works Approval
Landscape Planting Plan
Sheet 5 of 9

Scale at A1 1:200m

Discipline	Landscape Architecture
Job No	240073
Drawing Status	Works Approval
Drawing No	CTTL-S1AW2-LLU-DRG-5105
Issue	B

NOT FOR CONSTRUCTION



Issue	Description	Date	By	Chkd	Appd
B	Final Issue	24/07/15	SS	JK	JI
A	Issue for Comment	05/06/15	SS	JK	JI



ARUP jila hill thalis
ARCHITECTURE + URBAN PROJECTS PTY LTD

calibre
CONSULTING

tait | waddington
ARCHITECTURE, PLANNING & THE URBAN LANDSCAPE

Client
CITY TO THE LAKE

ACT Government
Land Development Agency
CANNERRA FIRST

Job Title
City to the Lake
West Basin Foreshore

Drawing Title
Works Package 2 - Works Approval
Landscape Planting Plan
Sheet 6 of 9

Scale at A1	1:200m
Discipline	Landscape Architecture
Job No	240073
Drawing Status	Works Approval
Drawing No	CTTL-S1AW2-LLU-DRG-5106
Issue	B



JOINS DRG-5106

JOINS DRG-5108

FOR NEW TREE IN WETLAND DETAIL
REFER CTTL-S1AW2-LLU-DRG-5202
DETAIL 06

FOR NEW TREE IN DECO GRANITE DETAIL
REFER CTTL-S1AW2-LLU-DRG-5202
DETAIL 05

NOT FOR CONSTRUCTION

Issue	Description	Date	By	Chkd	Apptd
B	Final Issue	24/07/15	SS	JK	JI
A	Issue for Comment	05/06/15	SS	JK	JI



ARUP jila hill thalis
ARCHITECTURE + URBAN PROJECTS PTY LTD

calibre
CONSULTING

tait | waddington
ARCHITECTURE, PLANNING & THE URBAN LANDSCAPE

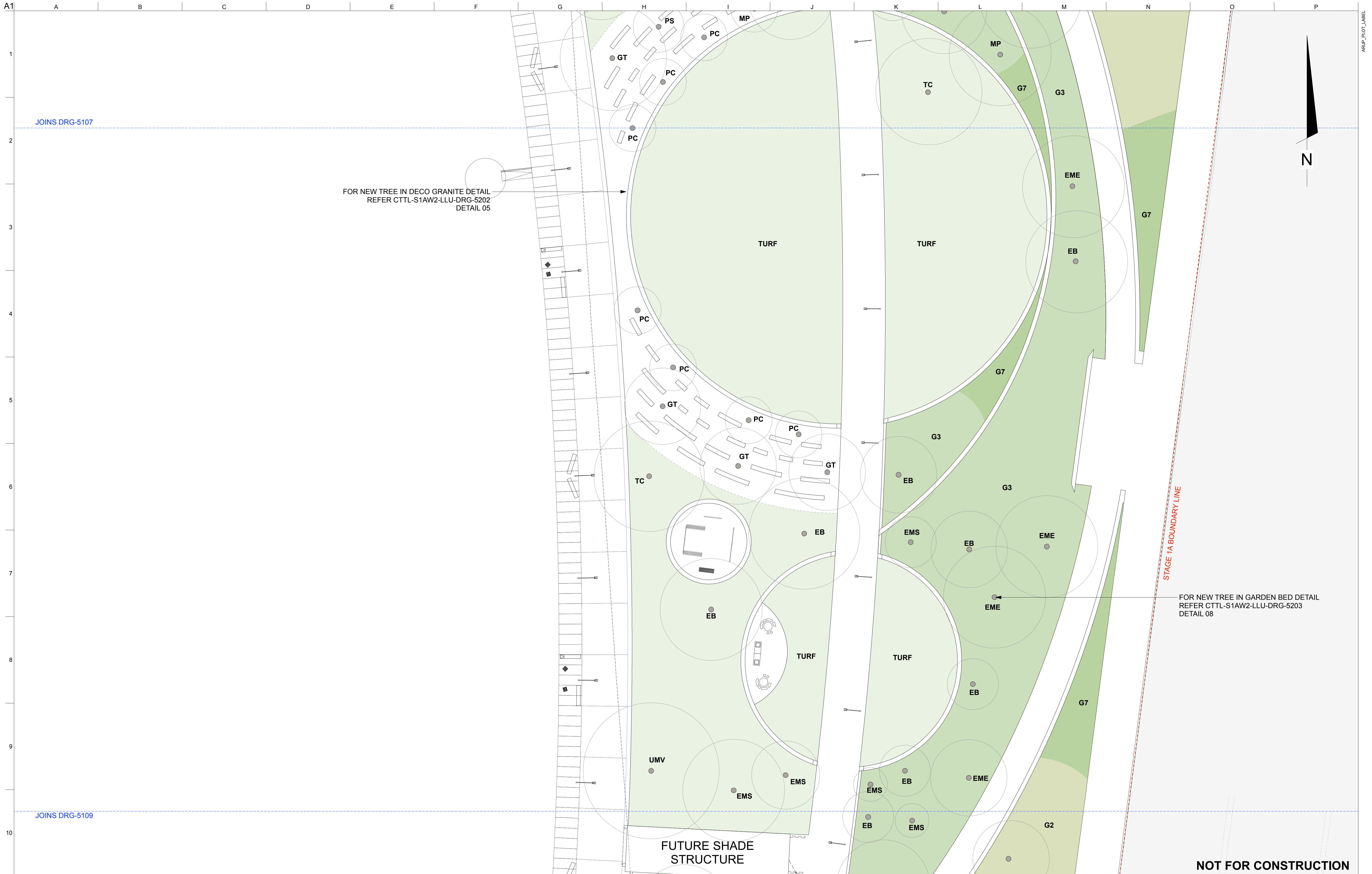
Client
CITY TO THE LAKE

ACT Government
Land Development Agency
CANBERRA FIRST

Job Title
City to the Lake
West Basin Foreshore

Drawing Title
Works Package 2 - Works Approval
Landscape Planting Plan
Sheet 7 of 9

Scale at A1	1:200m
Discipline	Landscape Architecture
Job No	240073
Drawing Status	Works Approval
Drawing No	CTTL-S1AW2-LLU-DRG-5107
Issue	B



JOINS DRG-5107

FOR NEW TREE IN DECO GRANITE DETAIL
REFER CCTL-S1AW2-LLU-DRG-5202
DETAIL 05

STAGE 1A BOUNDARY LINE

FOR NEW TREE IN GARDEN BED DETAIL
REFER CCTL-S1AW2-LLU-DRG-5203
DETAIL 08

JOINS DRG-5109

FUTURE SHADE
STRUCTURE

NOT FOR CONSTRUCTION

Issue	Description	Date	By	Chkd	Appd
B	Final Issue	24/07/15	SS	JK	JI
A	Issue for Comment	05/06/15	SS	JK	JI



ARUP jila hill thalis
ARCHITECTURE + URBAN PROJECTS PTY LTD

calibre
CONSULTING

tait | waddington
ARCHITECTURE, PLANNING & THE URBAN LANDSCAPE

Client
CITY TO THE LAKE

ACT Government
Land Development Agency
CANBERRA FIRST

Job Title
City to the Lake
West Basin Foreshore

Drawing Title
Works Package 2 - Works Approval
Landscape Planting Plan
Sheet 8 of 9

Scale at A1	1:200m
Discipline	Landscape Architecture
Job No	240073
Drawing Status	Works Approval
Drawing No	CCTL-S1AW2-LLU-DRG-5108
Issue	B



A1
1
2
3
4
5
6
7
8
9
10

A B C D E F G H I J K L M N O P

JOINS DRG-5108

ARUP_PLOT_LABEL

NOT FOR CONSTRUCTION

Issue	Description	Date	By	Chkd	Apptd
B	Final Issue	24/07/15	SS	JK	JI
A	Issue for Comment	05/06/15	SS	JK	JI



ARUP jila hill thalis
ARCHITECTURE + URBAN PROJECTS PTY LTD

calibre
CONSULTING

tait | waddington
ARCHITECTURE, PLANNING & THE URBAN LANDSCAPE

Client

CITY TO THE LAKE

ACT Government

Land Development Agency
CANBERRA FIRST

Job Title
City to the Lake
West Basin Foreshore

Drawing Title
Works Package 2 - Works Approval
Landscape Planting Plan
Sheet 9 of 9

Scale at A1	1:200m
Discipline	Landscape Architecture
Job No	240073
Drawing Status	Works Approval
Drawing No	CTTL-S1AW2-LLU-DRG-5109
Issue	B

Do not scale

© Arup