

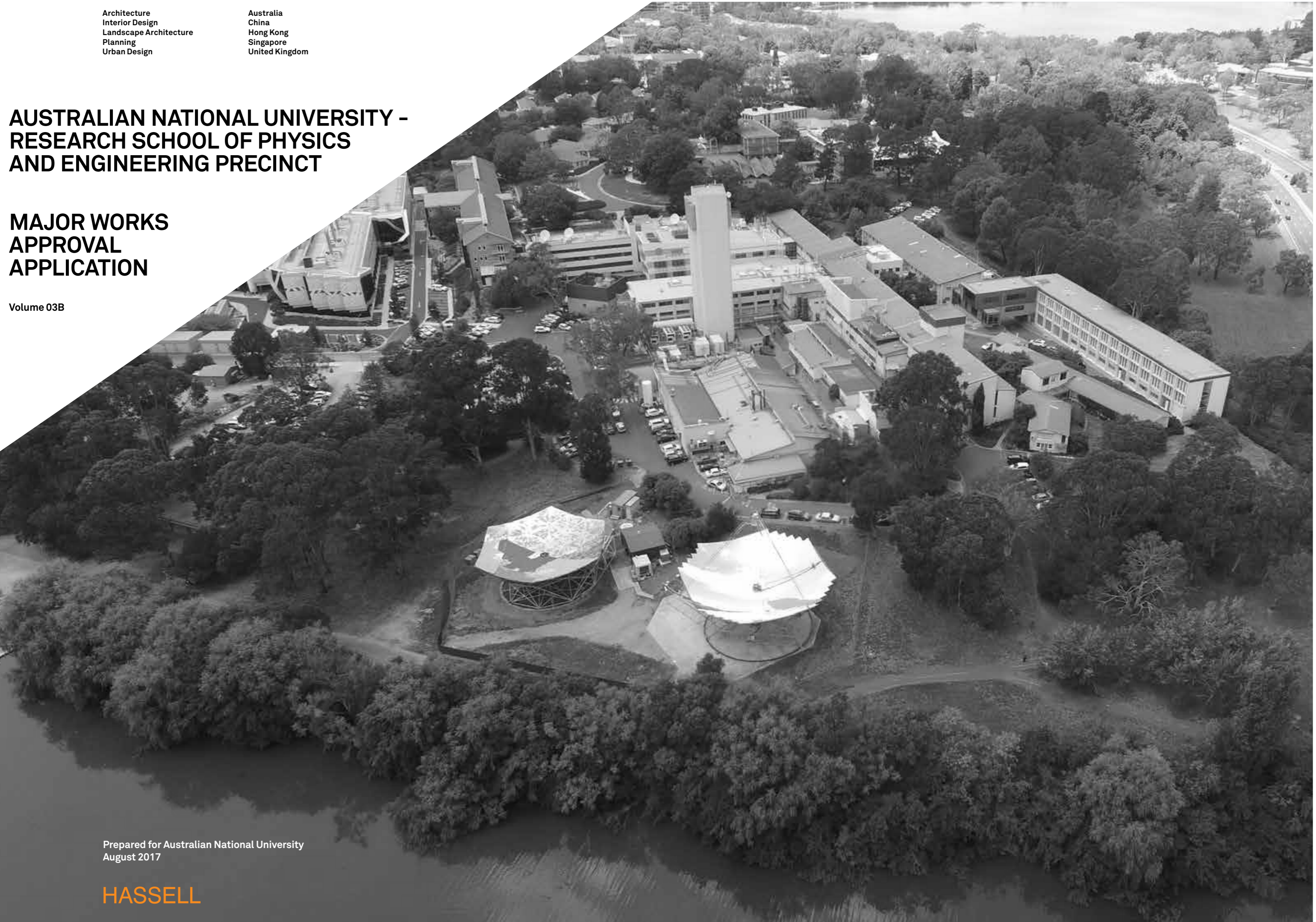
Architecture
Interior Design
Landscape Architecture
Planning
Urban Design

Australia
China
Hong Kong
Singapore
United Kingdom

AUSTRALIAN NATIONAL UNIVERSITY – RESEARCH SCHOOL OF PHYSICS AND ENGINEERING PRECINCT

MAJOR WORKS APPROVAL APPLICATION

Volume 03B



Prepared for Australian National University
August 2017

HASSELL

Front cover image: ANU RSPE Precinct

Contact

Mark Roehrs, Principal
mroehrs@hassellstudio.com

HASELL
36 Warry Street
Fortitude Valley Queensland
Australia 4006
T +61 7 3914 4000
hassellstudio.com
@HASELL_Studio
HASELL Limited
ABN 24 007 711 435

Document control

HASELL Project Number

Rev	Date	Approved by	Description
A	30.08.2017	MR	Major Works Approval Application Issue

01

Planning Report

_Works Approval Planning Report

02

Schedule of Proposed Works

_Architectural Design Statement
_Landscape Design Statement
_Exterior Lighting Design Statement
_Works associated with Services Connections
_Extent of Earthworks
_Supporting drawings - Refer to Document Transmittal

03

Detailed Site Plan

Volume 3A

_Site and context diagrams

Volume 3B

_Site Works Plans - Refer to Document Transmittal
_Underground Services Drawings - Refer to Document Transmittal
_Demolition drawings - Refer to Document Transmittal

04

Architectural Drawings

_Refer Document Transmittal

05

Landscape Plans

_Refer Document Transmittal

06

Civil and Excavation Plans

_Supporting drawings - Refer to Document Transmittal

07

Drawing Schedule

_Document Transmittal - (xlsx format)

08

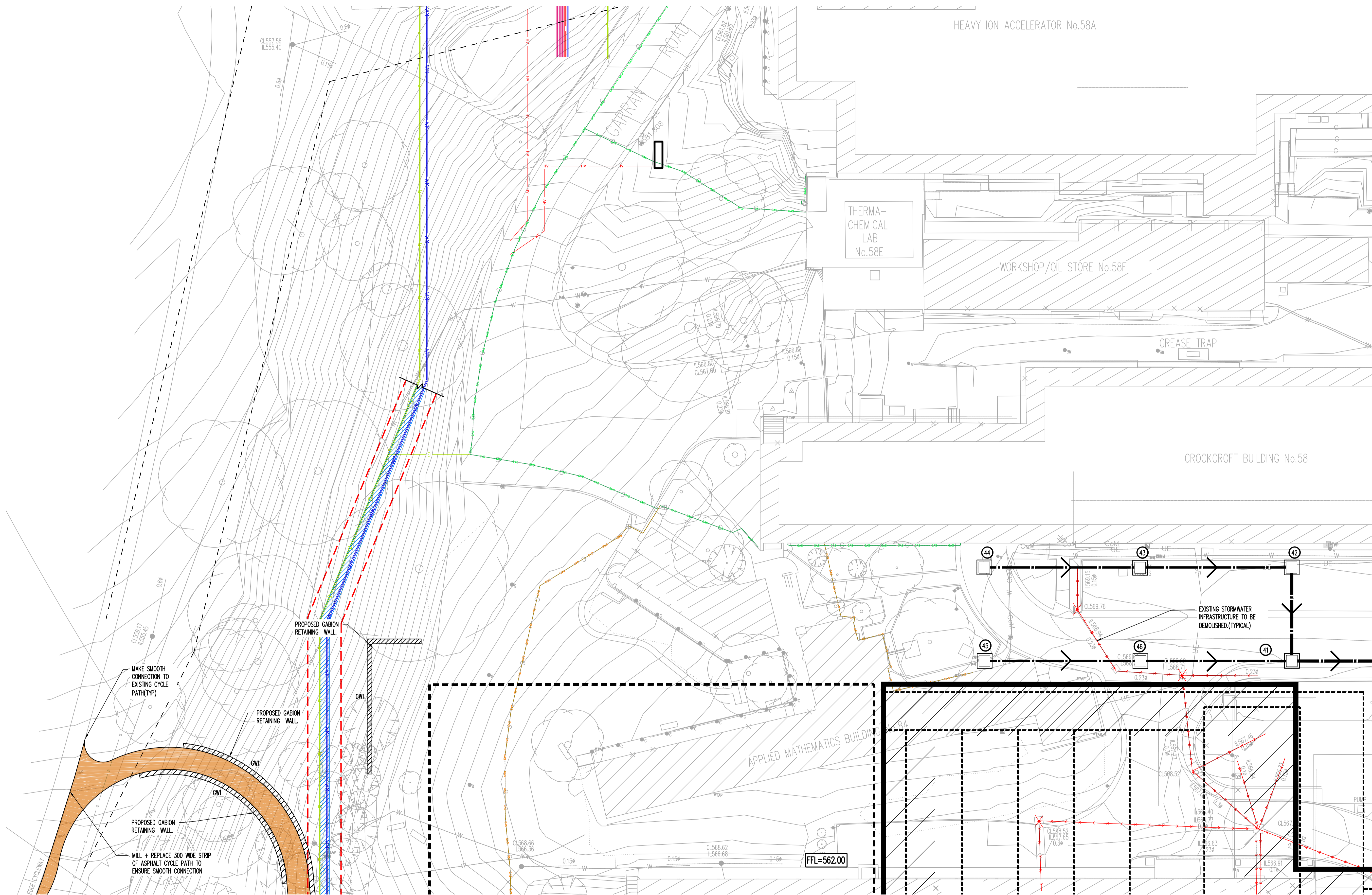
3D Model

_Aerial view
_Entry podium
_Parkes Way view approached from the west
_South facade

09

Consultation Report

**Site Works and
Underground Services
Plans**



NOTE
FOR LEGENDS, GENERAL NOTES AND SCHEDULES REFER DRAWING SHEET C100

SITE WORKS PLAN
SCALE 1:200

Filename: C141 - C145.dwg - USER: tjwhm - Plot File Created: Aug 28, 2017 - 4:01pm

A1 2 1 2 3 4 5 6 7 8 9 10

Rev	Description	Eng	Draft	Date	Rev	Description	Eng	Draft	Date	Rev	Description	Eng	Draft	Date
A	FOR APPROVAL	CP	BM	28.08.17										

Architect
HASSELL
61 Little Collins Street
Melbourne VIC
Australia 3000
T +61 3 8102 3000

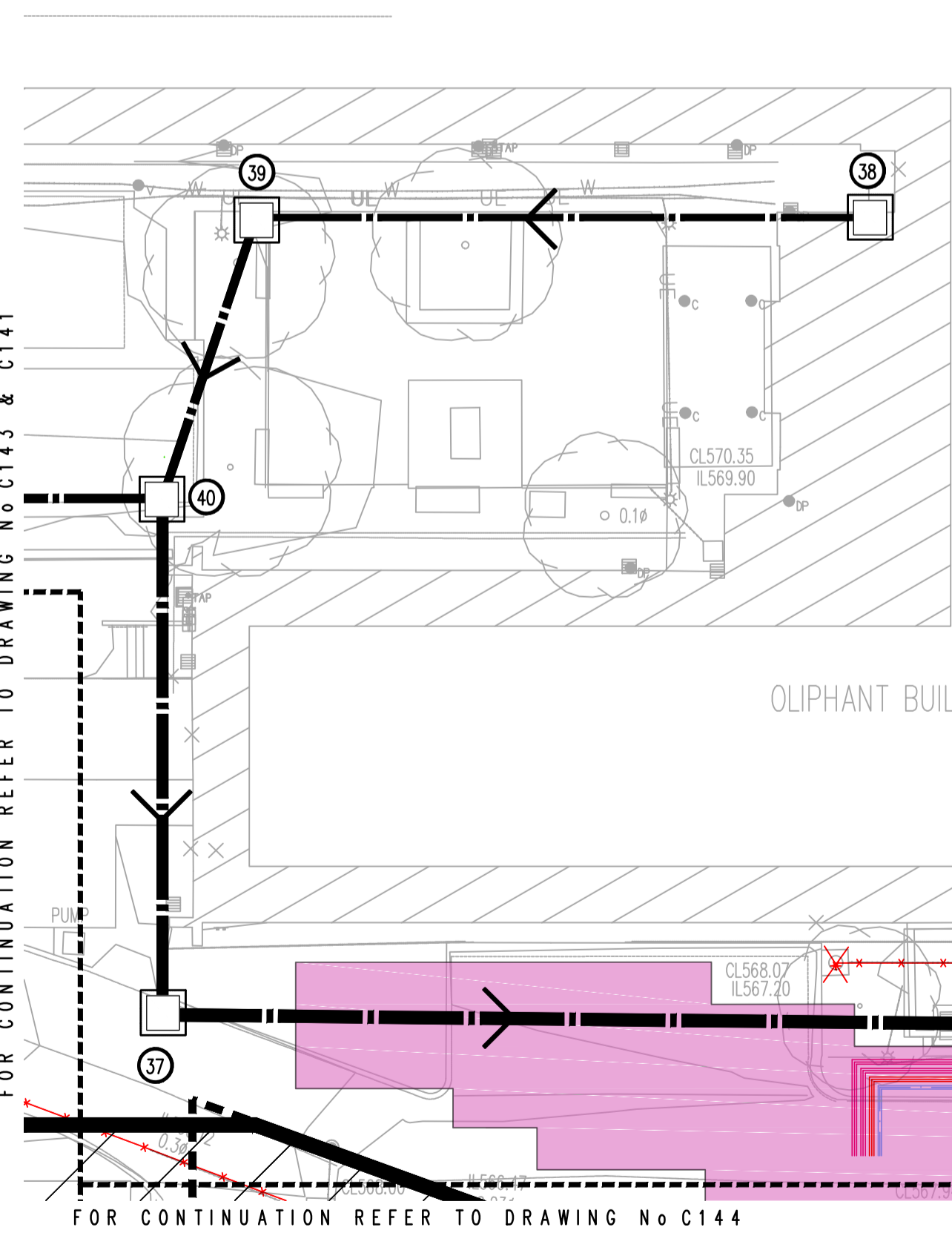
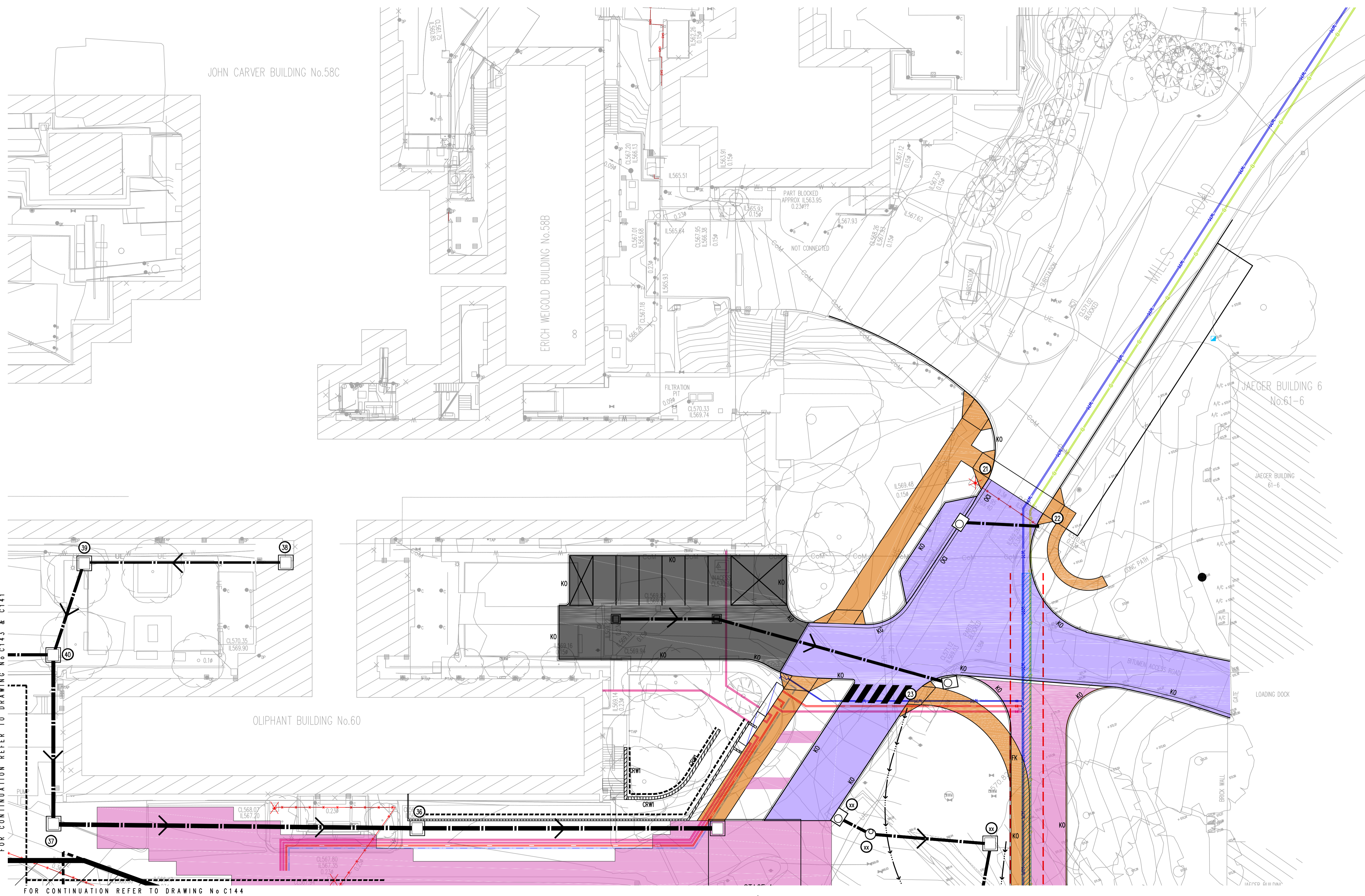
Civil Engineer
TTW Taylor Thomson Whitting
612 6285 1766 | 103 Tennant Street Fyshwick ACT 2069

Project
ANU RESEARCH SCHOOL OF PHYSICS AND ENGINEERING STAGE 1

Sheet Subject
SITE WORKS PLAN SHEET 1 OF 4

PRELIMINARY

Scale: A1
1:200
Drawn: BM
Authorized:
Job No: 159039
Drawing No: C141
Revision: A
Plot File Created: Aug 28, 2017 - 4:01pm



NOTE
FOR LEGENDS, GENERAL NOTES AND SCHEDULES REFER DRAWING SHEET C100

SITE WORKS PLAN
SCALE 1:200

PRELIMINARY

Filename: C141 - C145.dwg - USER: tjym - Plot File Created: Aug 28, 2017 - 4:01pm

A1	2	1	2	3	4	5	6	7	8	9	10
----	-------	---	---	---	---	---	---	---	---	---	---	----

Rev	Description	Eng	Draft	Date	Rev	Description	Eng	Draft	Date	Rev	Description	Eng	Draft	Date
A	FOR APPROVAL	CP	BM	28.08.17										

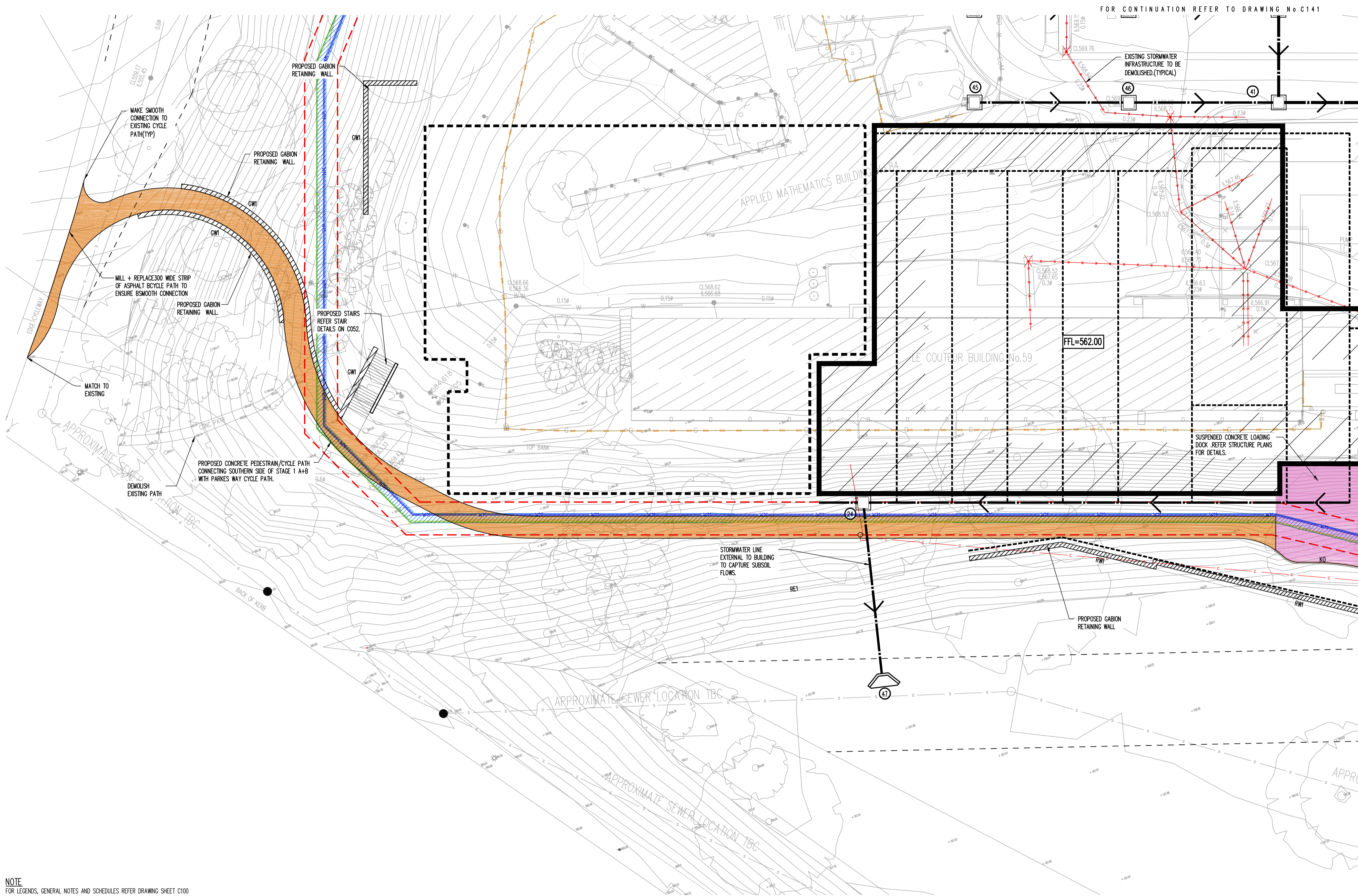
Architect
HASSELL
61 Little Collins Street
Melbourne VIC
Australia 3000
T +61 3 8102 3000

Civil Engineer
TTW Taylor Thomson Whitting
612 6285 1766 | 103 Tennant Street Fyshwick ACT 2069

Project
ANU RESEARCH SCHOOL OF PHYSICS AND ENGINEERING STAGE 1

Sheet Subject
SITE WORKS PLAN SHEET 2 OF 4

Scale : A1
1:200
Drawn
BM
Authorized
Job No
159039
Drawing No
C142
Revision
A
Plot File Created: Aug 28, 2017 - 4:01pm



SITE WORKS PLAN
SCALE 1:200

PRELIMINARY

Filename: C141 - C145.dwg - USER: tjym - Plot File Created: Aug 28, 2017 - 4:07pm

A1 0 1 2 3 4 5 6 7 8 9 10

Rev	Description	Eng	Draft	Date	Rev	Description	Eng	Draft	Date	Rev	Description	Eng	Draft	Date
A	FOR APPROVAL	CP	BM	28.08.17										

Architect
HASSELL
61 Little Collins Street
Melbourne VIC
Australia 3000
T +61 3 8102 3000

Civil Engineer
TTW Taylor Thomson Whitting
612 6285 1766 | 103 Tennant Street Fyshwick ACT 2069

Project
ANU RESEARCH SCHOOL OF PHYSICS AND ENGINEERING STAGE 1

Sheet Subject
SITE WORKS PLAN SHEET 3 OF 4

Scale: A1
1:200

Drawn
BM

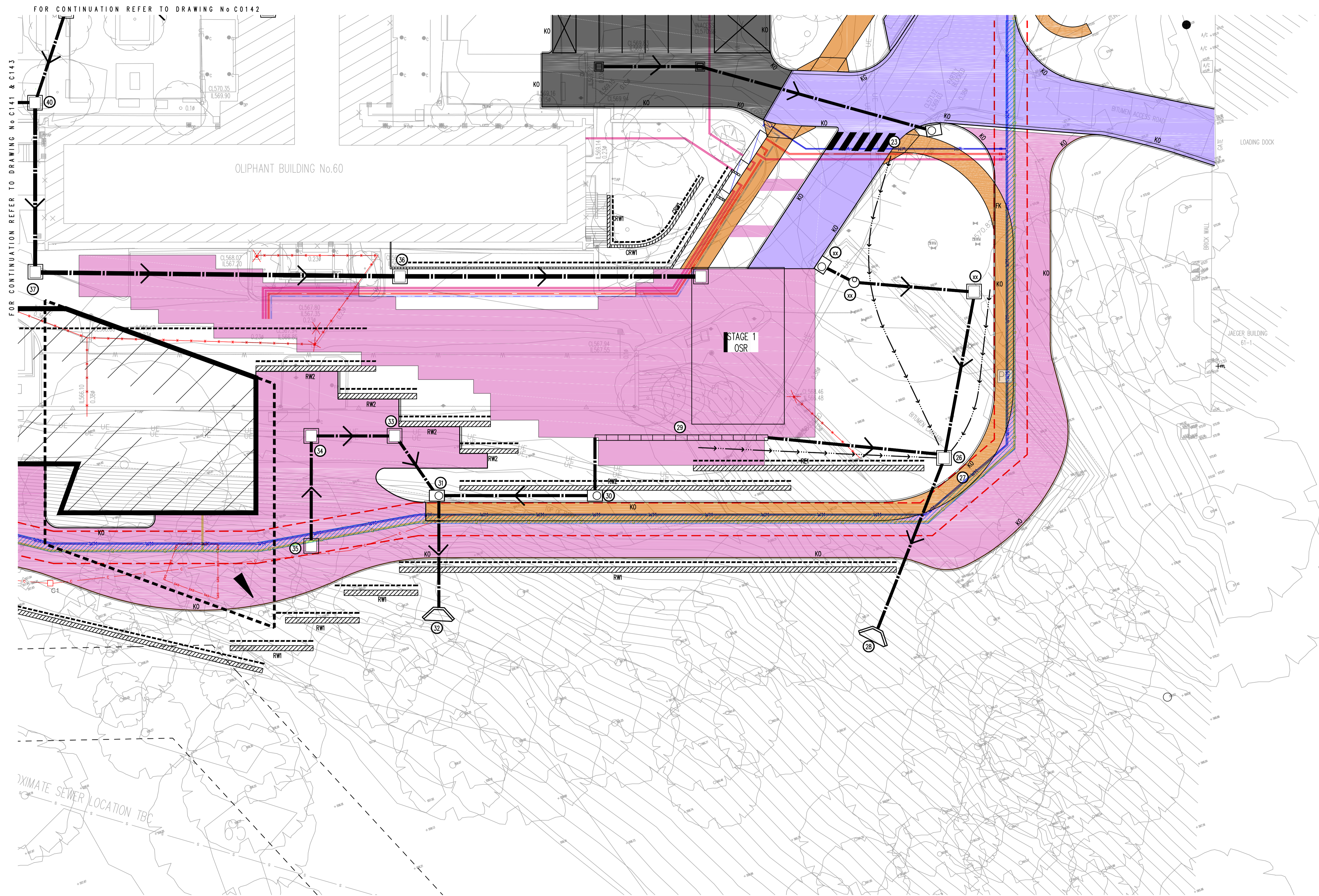
Authorized

Job No
159039

Drawing No
C143

Revision
A

Plot File Created: Aug 28, 2017 - 4:07pm



FOR CONTINUATION REFER TO DRAWING No C141 & C143

FOR CONTINUATION REFER TO DRAWING No C0142

OLIPHANT BUILDING No.60

STAGE 1 OSR

LOADING DOCK

JAEGER BUILDING 61-1

KIMATE SEWER LOCATION TBC

SITE WORKS PLAN
SCALE 1:200



PRELIMINARY

Filename: C141 - C145.dwg - USER: hlyjm - Plot File Created: Aug 28, 2017 - 4:01pm

NOTE
FOR LEGENDS, GENERAL NOTES AND SCHEDULES REFER DRAWING SHEET C100

A1 0 1 2 3 4 5 6 7 8 9 10

Rev	Description	Eng	Draft	Date	Rev	Description	Eng	Draft	Date	Rev	Description	Eng	Draft	Date
A	FOR APPROVAL	CP	BM	28.08.17										

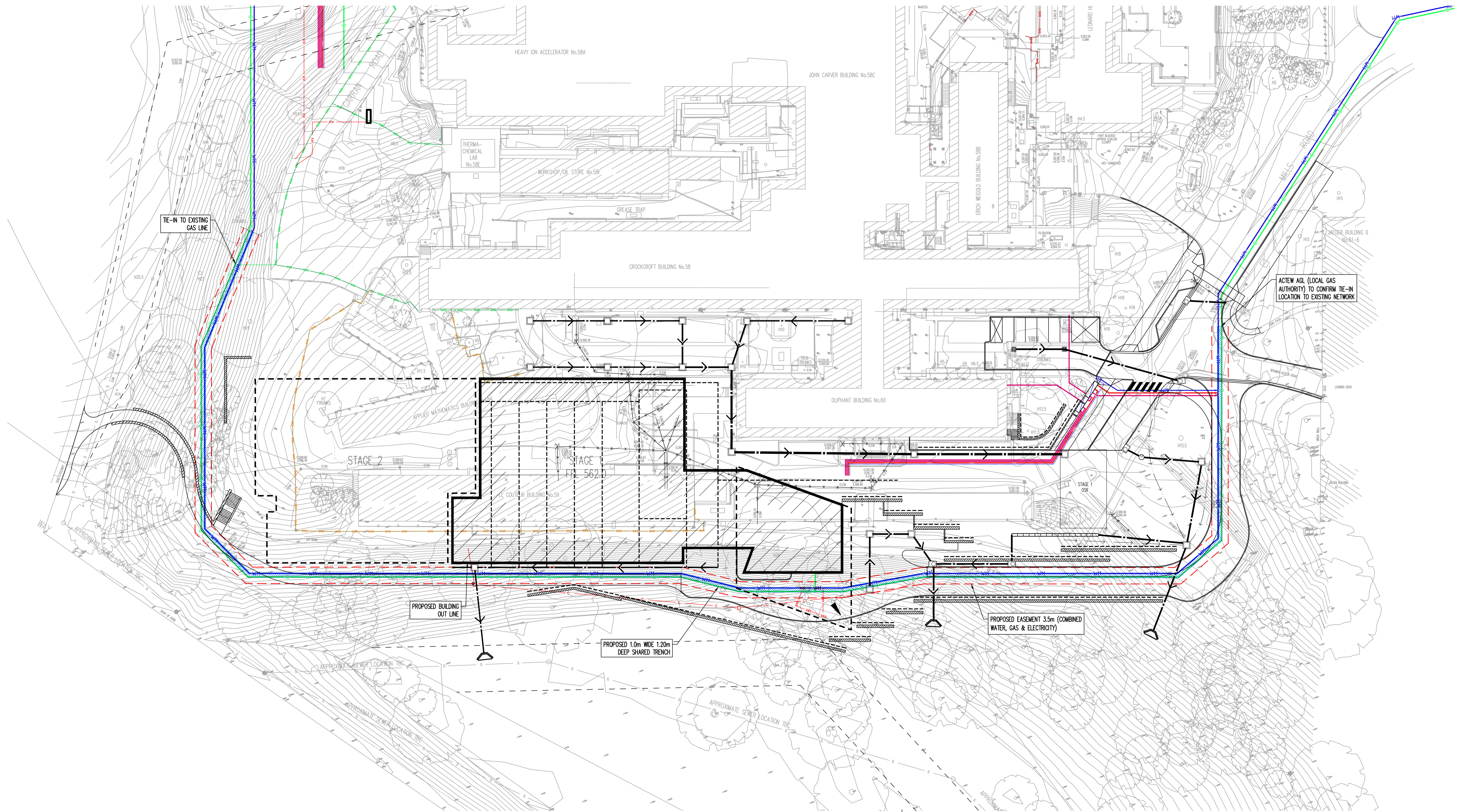
Architect
HASSELL
61 Little Collins Street
Melbourne VIC
Australia 3000
T +61 3 8102 3000

Civil Engineer
TTW Taylor Thomson Whitting
612 6285 1766 | 103 Tennant Street Fyshwick ACT 2069

Project
ANU RESEARCH SCHOOL OF PHYSICS AND ENGINEERING STAGE 1

Sheet Subject
SITE WORKS PLAN SHEET 4 OF 4

Scale : A1 1:200	Drawn BM	Authorized
Job No 159039	Drawing No C144	Revision A
Plot File Created: Aug 28, 2017 - 4:01pm		



INGROUND SERVICE PLAN
SCALE 1:400

Filename: C172.dwg - User: h3jm - Plot File Created: Aug 28, 2017 - 4:02pm

A1 0 1 2 3 4 5 6 7 8 9 10

Rev	Description	Eng	Draft	Date	Rev	Description	Eng	Draft	Date	Rev	Description	Eng	Draft	Date
A	FOR APPROVAL	CP	BM	28.08.17										

Architect
HASSELL
61 Little Collins Street
Melbourne VIC
Australia 3000
T +61 3 8102 3000

Civil Engineer
TTW Taylor Thomson Whitting
612 6285 1766 | 103 Tennant Street Fyshwick ACT 2069

Project
ANU RESEARCH SCHOOL OF PHYSICS AND ENGINEERING STAGE 1

Sheet Subject
INGROUND SERVICE PLAN

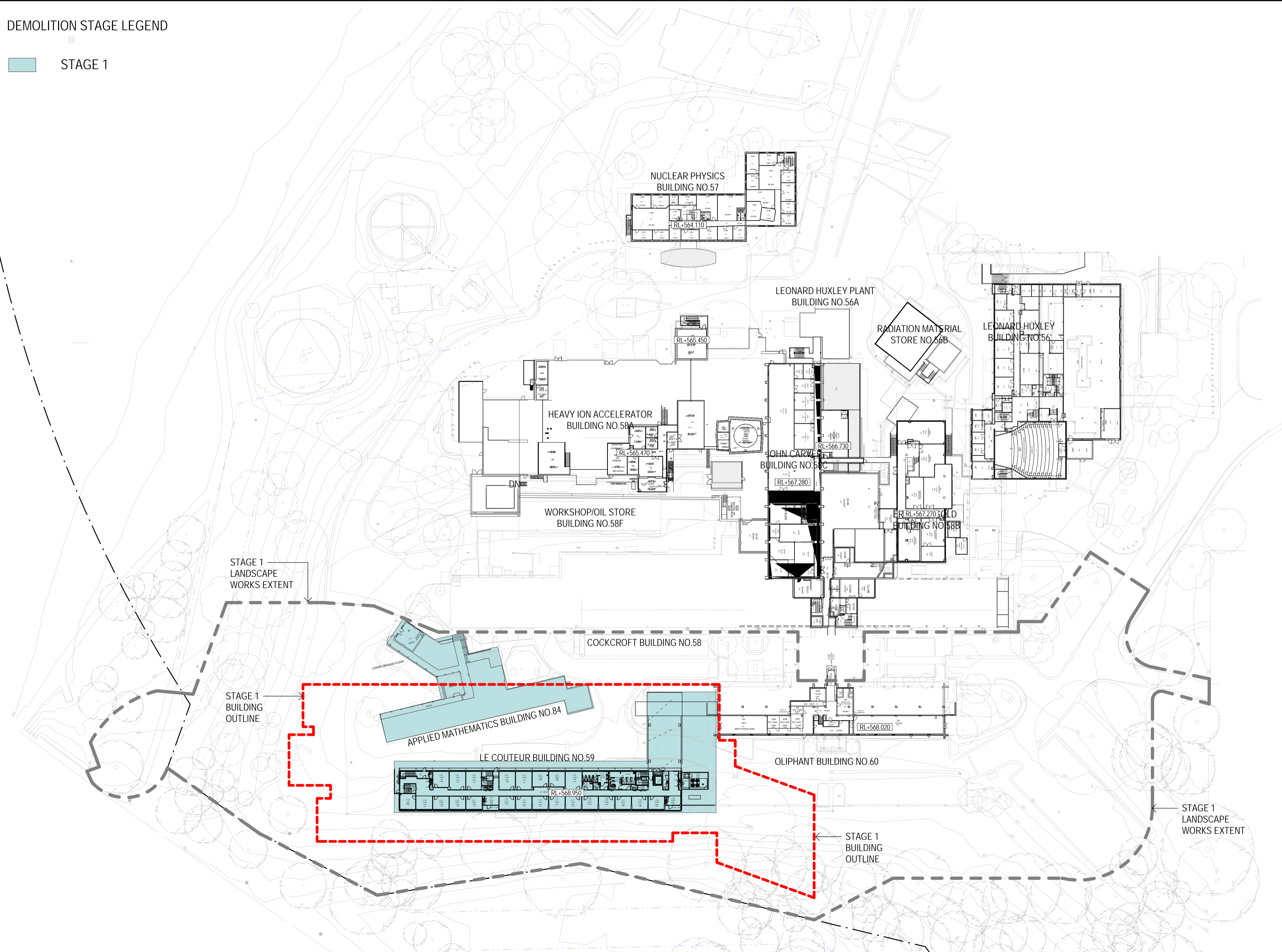
Scale: A1 1:400
Drawn: BM
Authorized: [Signature]
Job No: 159039
Drawing No: C172
Revision: A
Plot File Created: Aug 28, 2017 - 4:02pm

PRELIMINARY

Demolition Plans

DEMOLITION STAGE LEGEND

STAGE 1



1 LEVEL 2 DEMOLITION PLAN STAGE 1
1:500

Revision
A DRAFT NCA ISSUE

Date
21.08.17

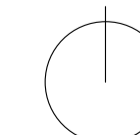
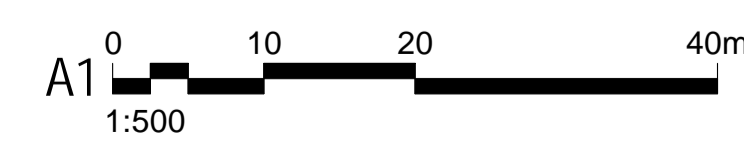
Scale
As indicated @ A1

Client
ANU

Project Name
ANU RSPE

Drawing
A160_0311
DEMOLITION PLAN STAGE 1 -
LEVEL 2

HASSELL



Australia**Adelaide**

HASSELL
Level 1
82 Waymouth Street
Adelaide SA
Australia 5000
T +61 8 8220 5000
E adelaide@hassellstudio.com

Brisbane

HASSELL
36 Warry Street
Fortitude Valley QLD
Australia 4006
T +61 7 3914 4000
E brisbane@hassellstudio.com

Melbourne

HASSELL
61 Little Collins Street
Melbourne VIC
Australia 3000
T +61 3 8102 3000
E melbourne@hassellstudio.com

Perth

HASSELL
Level 1
Commonwealth Bank Building
242 Murray Street
Perth WA
Australia 6000
T +61 8 6477 6000
E perth@hassellstudio.com

Sydney

HASSELL
Level 2
Pier 8/9, 23 Hickson Road
Sydney NSW
Australia 2000
T +61 2 9101 2000
E sydney@hassellstudio.com

China**Beijing**

HASSELL
Suite 308-B011 Building A
Beijing Fortune Centre
7 Middle Dong San Huan Road
Chaoyang District
Beijing 100026 China
T +8610 5126 6908
E beijing@hassellstudio.com

Hong Kong

HASSELL
22F, 169 Electric Road
North Point Hong Kong
T +852 2552 9098
E hongkong@hassellstudio.com

Shanghai

HASSELL
12F base 45 Caoxi North Road
Xuhui District
Shanghai 200030 China
T +8621 5467 9333
E shanghai@hassellstudio.com

South East Asia**Singapore**

HASSELL
33 Tras Street #02-01
078973 Singapore
T +65 6224 4688
E singapore@hassellstudio.com

United Kingdom**Cardiff**

HASSELL
Level 2 Park House
Greyfriars Road
Cardiff CF10 3AF United Kingdom
T +44 29 2072 9071
E cardiff@hassellstudio.com

London

HASSELL
1 Curtain Place
London EC2A 3AN United Kingdom
T +44 20 7490 7669
E london@hassellstudio.com

United States of America**San Francisco**

HASSELL
Level 7
25 Taylor Street
San Francisco CA 94102
United States of America
T +1 415 860 7067
E sanfrancisco@hassellstudio.com